

I-5A



Evans, Mechwart, Hambleton & Tilton, Inc.  
Engineers • Surveyors • Planners • Scientists  
5500 New Albany Road, Columbus, OH 43054  
Phone: 614.775.4500 Toll Free: 888.775.3648  
emht.com

# SURVEY OF ACREAGE PARCEL

QUARTER TOWNSHIP 1, TOWNSHIP 2 NORTH, RANGE 17 WEST

UNITED STATES MILITARY DISTRICT

TOWNSHIP OF BLENDON, COUNTY OF FRANKLIN, STATE OF OHIO

Date: October 1, 2021

Scale: 1" = 50'

Job No: 2019-1329

Sheet No: 1 of 1

Plan No. 3695-E

### SURVEY NOTE:

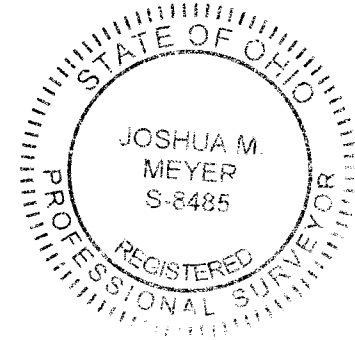
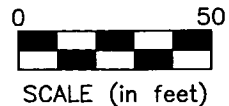
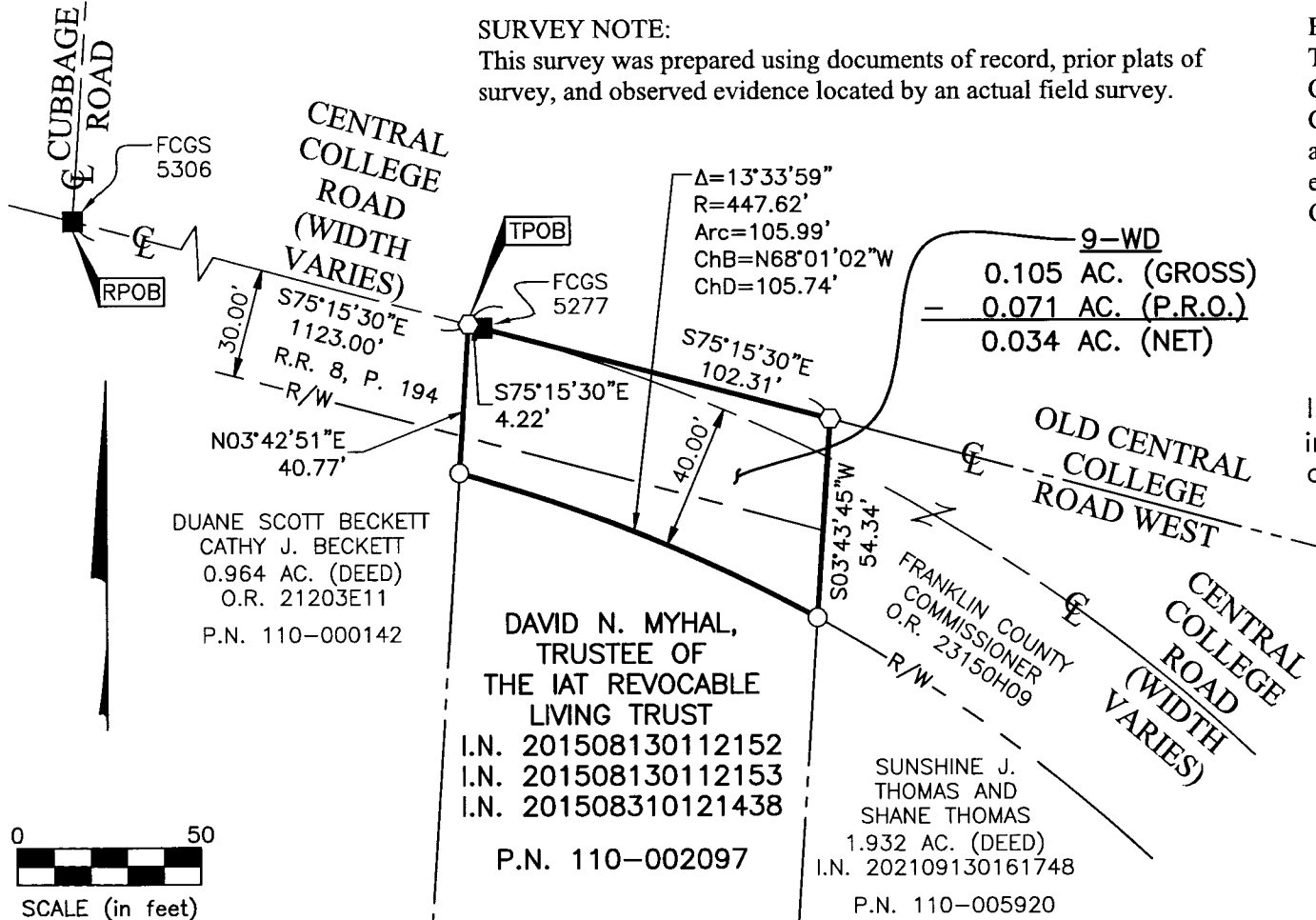
This survey was prepared using documents of record, prior plats of survey, and observed evidence located by an actual field survey.

### BASIS OF BEARINGS:

The Bearings shown hereon are based on the Ohio State Plane Coordinate System (South Zone) as per NAD83 (NSRS 2007). Control for bearings was from coordinates of monuments D5RESET and 8825RESET, having a bearing of South 45° 01' 28" West, established by the Franklin County Engineering Department, using Global Positioning System procedures and equipment.

- = MON. FND.
- = I.P. SET
- ◊ = MAG. NAIL SET

I.P. Set are 13/16" I.D. iron pipes 30" long with cap inscribed EMHT INC.



**RECORDED**

**OCT 25 2021**

Franklin County Engineer  
Cornell R. Robertson, P.E., P.S.

By Joshua M. Meyer 10-1-2021  
 Joshua M. Meyer  
 Professional Surveyor No. 8485  
 jmeyer@emht.com  
 Date