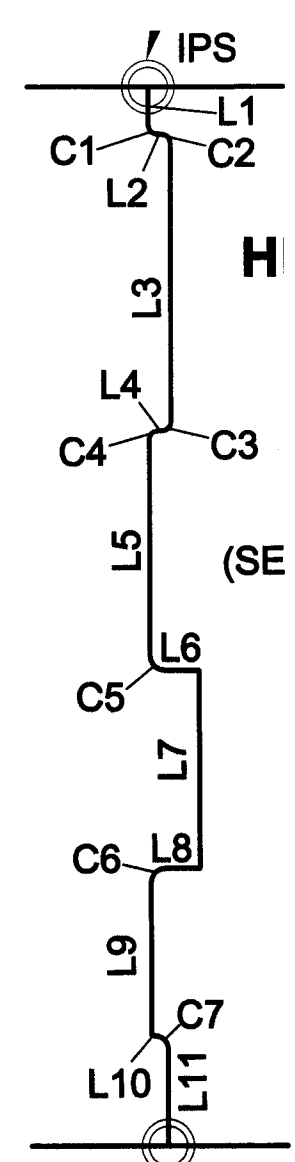
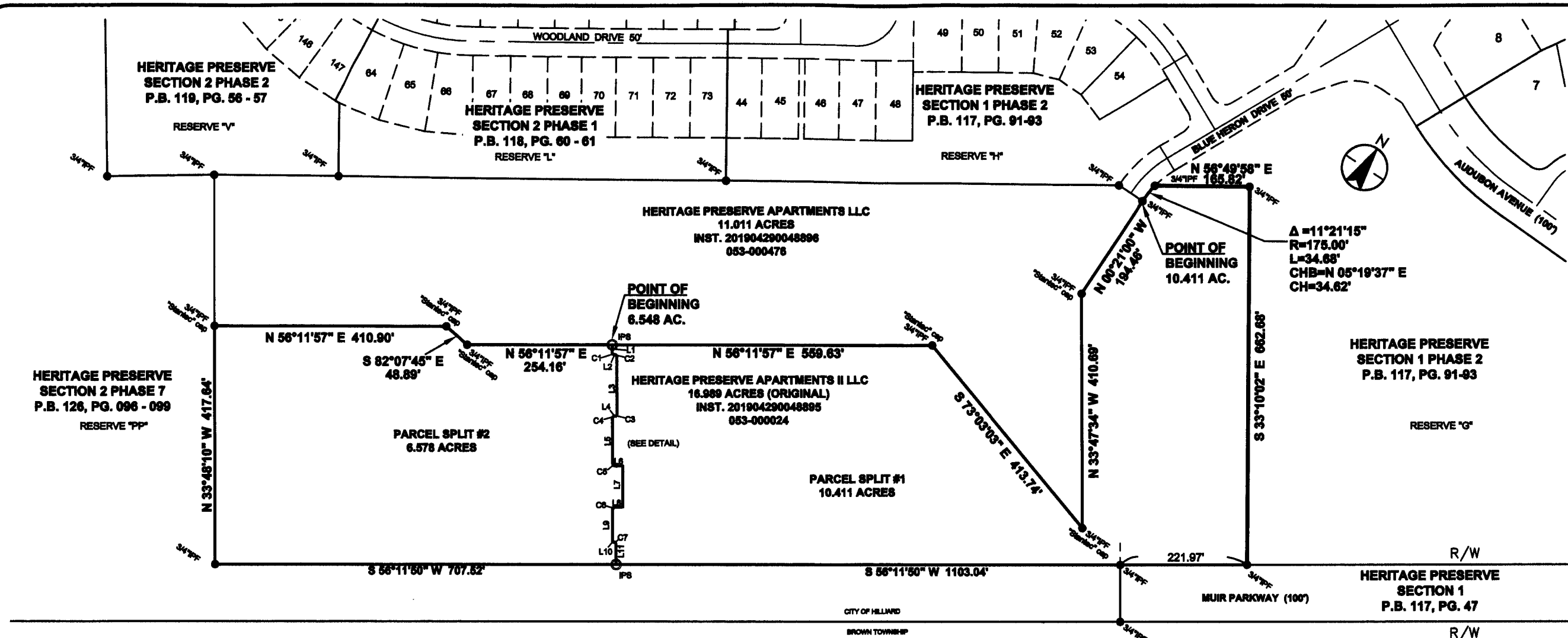


U:\173408993\survey\dwg\173408993_Apts II_split.dwg Layout1 Mar 01, 2021 - 9:47:20am rbosworth



SCALE IN FEET
Scale: 1 Inch = 200 Feet

FANNY M. TROYER AND ABE N. TROYER, CO-TRUSTEES
88 ACRES
INST. NO. 200408040100850
120-000183

LEGEND

- IPS Iron Pipe Set, 3/4 inch, 30 inches in length, with a yellow cap stamped the name "STANTEC".
- IPF Iron Pipe Found
- ▲ RRSF Railroad Spike Found
- △ RRSS Railroad Spike Set
- PKNF PK Nail Found
- RBF Rebar Found
- ⊛ CGSS Cotton Gin Spindle Set
- MON Monument Box Found
- Stone Stone Found
- PKNS PK Nail Set

CERTIFICATION:

I hereby certify that this survey shown on the attached plat was prepared from an actual field survey performed in December, 2016 made under the direct supervision of Tim A. Baker, P.S. 7818 and that it and the information, courses and distances as shown are correct to the best of my knowledge.

STANTEC CONSULTING SERVICES INC.

Robert A. Bosworth 3-1-21
Robert A. Bosworth
Professional Surveyor No. S-7750

LINE	BEARING	DISTANCE
L1	S33°47'34"E	14.05'
L2	N56°12'26"E	2.00'
L3	S33°47'34"E	102.00'
L4	S56°12'26"W	2.00'
L5	S33°47'34"E	78.97'
L6	N56°12'26"E	13.00'

L7	S33°47'34"E	72.00'
L8	S56°12'26"W	13.00'
L9	S33°47'34"E	56.05'
L10	N56°12'26"E	1.00'
L11	S33°47'34"E	35.04'

CURVE	DELTA ANGLE	RADIUS	ARC LENGTH	CHORD BEARING	CHORD LENGTH
C1	90°00'00"	3.00'	4.71'	S 78°47'34" E	4.24'
C2	90°00'00"	3.00'	4.71'	S 78°47'34" E	4.24'
C3	90°00'00"	3.00'	4.71'	S 11°12'26" W	4.24'
C4	90°00'00"	3.00'	4.71'	S 11°12'26" W	4.24'
C5	90°00'00"	5.00'	7.85'	S 78°47'34" E	7.07'
C6	90°00'00"	5.00'	7.85'	S 11°12'26" W	7.07'
C7	90°00'00"	5.00'	7.85'	S 78°47'34" E	7.07'

LOT SPLIT SURVEY OF
10.411 and 6.578 ACRES
SITUATE IN
COUNTY OF FRANKLIN, CITY OF HILLIARD, OHIO

LYING IN
SURVEY NO. 6957
VIRGINIA MILITARY DISTRICT

PREPARED BY:

1500 LAKE SHORE DRIVE
SUITE 100
COLUMBUS, OHIO 43204
(614) 486-4383 1-800-340-2743
FAX (614) 486-4387



Copyright Reserved
The Contractor shall verify and be responsible for all dimensions. DO NOT scale the drawing - any errors or omissions shall be reported to Stantec without delay.
The Copyrights to all designs and drawings are the property of Stantec. Reproduction or use for any purposes other than that authorized by Stantec is forbidden.

