

FEB 02 2021

Franklin County Engineer  
Cornell R. Robertson, P.E., P.S.

HERITAGE PRESERVE  
SECTION 2 PHASE 2  
P.B. 119, PG. 56 - 57

HERITAGE PRESERVE  
SECTION 2 PHASE 1  
P.B. 118, PG. 60 - 61

HERITAGE PRESERVE  
SECTION 1 PHASE 2  
P.B. 117, PG. 91-93

HERITAGE PRESERVE APARTMENTS LLC  
11.011 ACRES  
INST. 201904290048896  
063-000476

POINT OF  
BEGINNING  
6.548 AC.

HERITAGE PRESERVE APARTMENTS II LLC  
16.989 ACRES (ORIGINAL)  
INST. 201904290048895  
063-000024

POINT OF  
BEGINNING  
10.411 AC.

Δ = 11°21'15"  
R = 175.00'  
L = 34.68'  
CHB = N 05°19'37" E  
CH = 34.62'



HERITAGE PRESERVE  
SECTION 2 PHASE 7  
P.B. 126, PG. 096 - 099  
RESERVE "PP"

PARCEL SPLIT #2  
6.548 ACRES

PARCEL SPLIT #1  
10.411 ACRES

HERITAGE PRESERVE  
SECTION 1 PHASE 2  
P.B. 117, PG. 91-93

RESERVE "G"

HERITAGE PRESERVE  
SECTION 1  
P.B. 117, PG. 47

FANNY M. TROYER AND ABE N. TROYER, CO-TRUSTEES  
88 ACRES  
INST. NO. 200408040100850  
120-000183



SCALE IN FEET

Scale: 1 inch = 200 Feet

LEGEND

- IPS Iron Pipe Set, 3/4 inch, 30 inches in length, with a yellow cap stamped the name "STANTEC".
- RBF Rebar Found
- IPF Iron Pipe Found
- ⚙️ CGSS Cotton Gin Spindle Set
- ▲ RRSF Railroad Spike Found
- MON Monument Box Found
- △ RRSR Railroad Spike Set
- Stone Stone Found
- PKNF PK Nail Found
- PKNS PK Nail Set

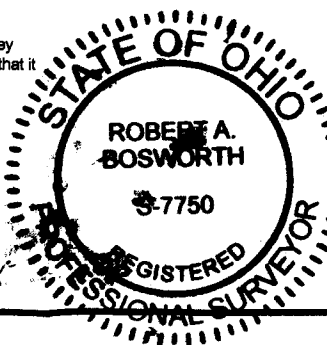
CERTIFICATION:

I hereby certify that this survey shown on the attached plat was prepared from an actual field survey performed in December, 2018 made under the direct supervision of Tim A. Baker, P.S. 7818 and that it and the information, courses and distances as shown are correct to the best of my knowledge.

STANTEC CONSULTING SERVICES INC.

*Robert A. Bosworth*

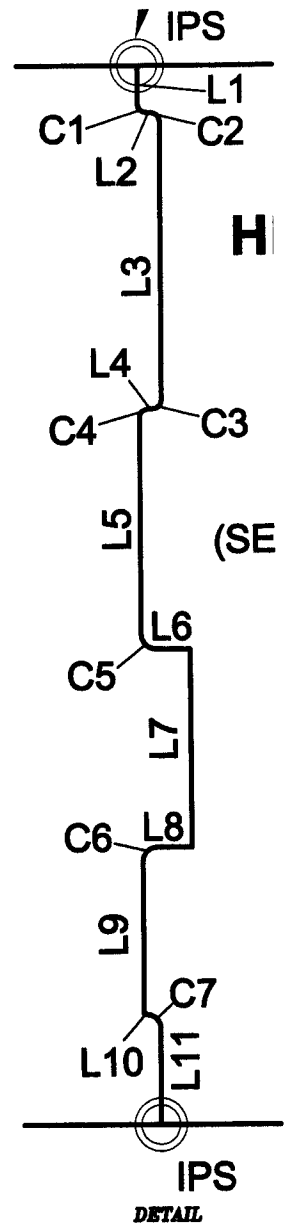
Robert A. Bosworth  
Professional Surveyor No. S-7750



LINE	BEARING	DISTANCE
L1	S33°47'34"E	14.05'
L2	N56°12'26"E	2.00'
L3	S33°47'34"E	102.00'
L4	S56°12'26"W	2.00'
L5	S33°47'34"E	78.97'
L6	N56°12'26"E	13.00'

L7	S33°47'34"E	72.00'
L8	S56°12'26"W	13.00'
L9	S33°47'34"E	56.05'
L10	N56°12'26"E	1.00'
L11	S33°47'34"E	35.04'

CURVE	DELTA ANGLE	RADIUS	ARC LENGTH	CHORD BEARING	CHORD LENGTH
C1	90°00'00"	3.00'	4.71'	S 78°47'34" E	4.24'
C2	90°00'00"	3.00'	4.71'	S 78°47'34" E	4.24'
C3	90°00'00"	3.00'	4.71'	S 11°12'26" W	4.24'
C4	90°00'00"	3.00'	4.71'	S 11°12'26" W	4.24'
C5	90°00'00"	5.00'	7.85'	S 78°47'34" E	7.07'
C6	90°00'00"	5.00'	7.85'	S 11°12'26" W	7.07'
C7	90°00'00"	5.00'	7.85'	S 78°47'34" E	7.07'



LOT SPLIT SURVEY OF  
10.411 and 6.548 ACRES  
SITUATE IN  
COUNTY OF FRANKLIN, CITY OF HILLIARD, OHIO

LYING IN  
SURVEY NO. 6957  
VIRGINIA MILITARY DISTRICT

PREPARED BY:

1500 LAKE SHORE DRIVE  
SUITE 100  
COLUMBUS, OHIO 43204  
(614) 486-4363 1-800-340-2743  
FAX (614) 486-4387



Copyright Reserved  
The Contractor shall verify and be responsible for all dimensions. DO Not scale the drawing - any errors or omissions shall be reported to Stantec without delay.  
The Copyrights to all designs and drawings are the property of Stantec. Reproduction or use for any purposes other than that authorized by Stantec is forbidden.

U:\173408993\survey\dwg\173408993\_Apts II\_split.dwg Layout1 Jan 27, 2021 - 10:50:43am rbosworth