



Evans, Mechwart, Hambleton & Tilton, Inc.
 Engineers • Surveyors • Planners • Scientists
 5500 New Albany Road, Columbus, OH 43054
 Phone: 614.775.4500 Toll Free: 888.775.3648

emht.com

SURVEY OF ACREAGE PARCEL

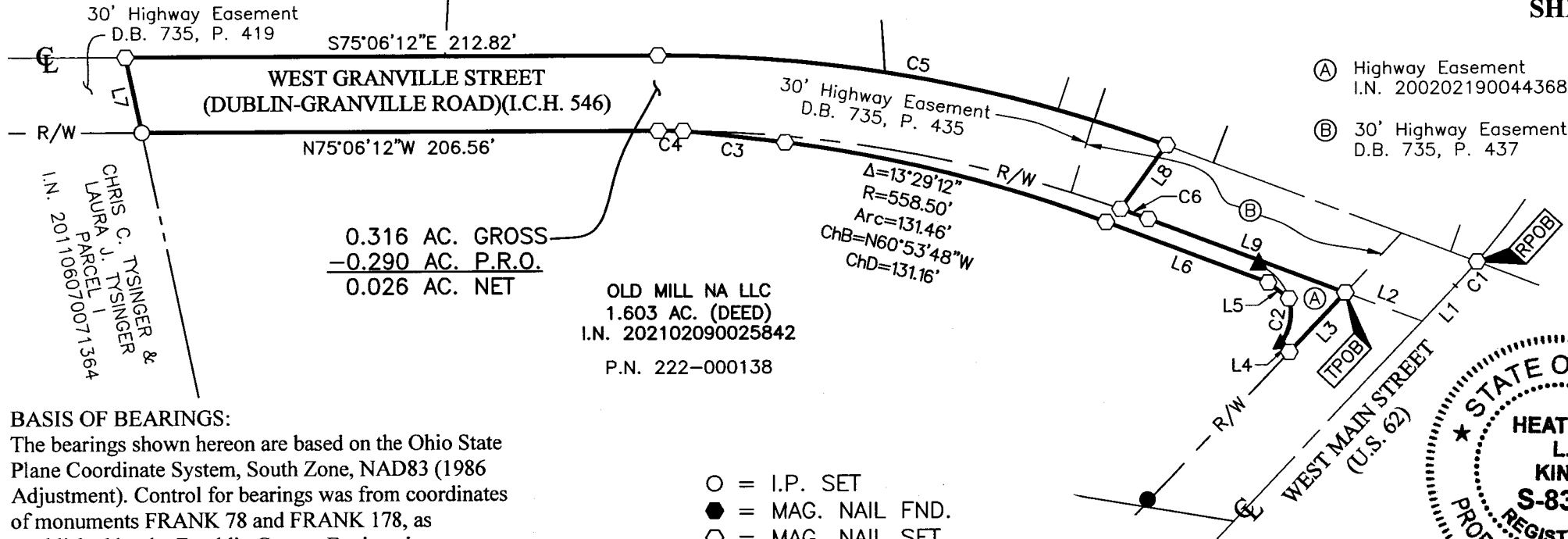
LOT 39, QUARTER TOWNSHIP 4, TOWNSHIP 2, RANGE 16
 UNITED STATES MILITARY LANDS
 CITY OF NEW ALBANY, COUNTY OF FRANKLIN, STATE OF OHIO

Date: April 29, 2019

Scale: 1" = 60'

Job No: 2018-1331

SHEET 1 OF 2

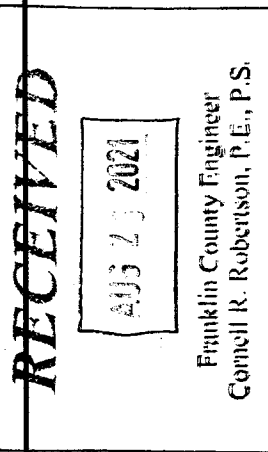


0.316 AC. GROSS
 -0.290 AC. P.R.O.
 0.026 AC. NET

OLD MILL NA LLC
 1.603 AC. (DEED)
 I.N. 202102090025842
 P.N. 222-000138

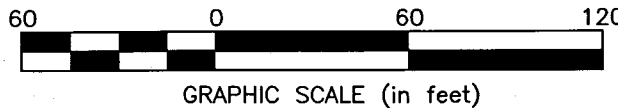
CHRIS C. TYSINGER &
 LAURA J. TYSINGER
 PARCEL 1
 I.N. 201106070071364

- (A) Highway Easement
I.N. 200202190044368
- (B) 30' Highway Easement
D.B. 735, P. 437



BASIS OF BEARINGS:
 The bearings shown hereon are based on the Ohio State Plane Coordinate System, South Zone, NAD83 (1986 Adjustment). Control for bearings was from coordinates of monuments FRANK 78 and FRANK 178, as established by the Franklin County Engineering Department using Global Positioning System procedures and equipment, having a bearing of North 58° 13' 15" East for a portion of West Main Street (U.S. Route 62).

- = I.P. SET
 - = MAG. NAIL FND.
 - = MAG. NAIL SET
 - ▲ = R.R. SPK. FND.
- I.P. Set are 13/16" I.D. iron pipes 30" long with cap inscribed EMHT INC.



SURVEY NOTE:
 This survey was prepared using documents of record, prior plats of survey, and observed evidence located by an actual field survey.

By Heather L. King Date 8/16/21
 Heather L. King
 Professional Surveyor No. 8307

J:\20181331\DWG\04SHEETS\BOUNDARY\20181331-VS-BNDY-RWAY-01.DWG plotted by KING, HEATHER on 8/16/2021 9:40:15 AM last saved by H KING on 8/16/2021 9:38:52 AM
 Xrefs:



Evans, Mechwart, Hambleton & Tilton, Inc.
 Engineers • Surveyors • Planners • Scientists
 5500 New Albany Road, Columbus, OH 43054
 Phone: 614.775.4500 Toll Free: 888.775.3648
 emht.com

SURVEY OF ACREAGE PARCEL

LOT 39, QUARTER TOWNSHIP 4, TOWNSHIP 2, RANGE 16
 UNITED STATES MILITARY LANDS
 CITY OF NEW ALBANY, COUNTY OF FRANKLIN, STATE OF OHIO

Date: April 29, 2019
 Scale: 1" = 60'
 Job No: 2018-1331

SHEET 2 OF 2

CURVE TABLE					
CURVE	DELTA	RADIUS	ARC	CH. BEARING	CH. DIST.
C1	2°34'06"	287.94'	12.91'	S56°56'12"W	12.91'
C2	53°15'57"	20.50'	19.06'	N25°32'45"E	18.38'
C3	1°34'19"	1487.00'	40.80'	N68°25'34"W	40.80'
C4	1°02'17"	542.96'	9.84'	N74°35'03"W	9.84'
C5	20°34'41"	572.96'	205.78'	S64°48'52"E	204.68'
C6	1°13'34"	542.96'	11.62'	S54°45'59"E	11.62'

LINE TABLE		
LINE	BEARING	DISTANCE
L1	S58°13'15"W	19.42'
L2	N54°09'12"W	32.44'
L3	S58°13'15"W	32.45'
L4	N31°45'19"W	4.89'
L5	N36°56'21"W	10.36'
L6	N54°09'12"W	68.27'
L7	N03°05'53"E	30.65'
L8	S50°32'43"W	31.13'
L9	S54°09'12"E	83.20'

RECEIVED

APR 29 2019

Franklin County Engineer
 Cornell R. Robertson, P.E., P.S.