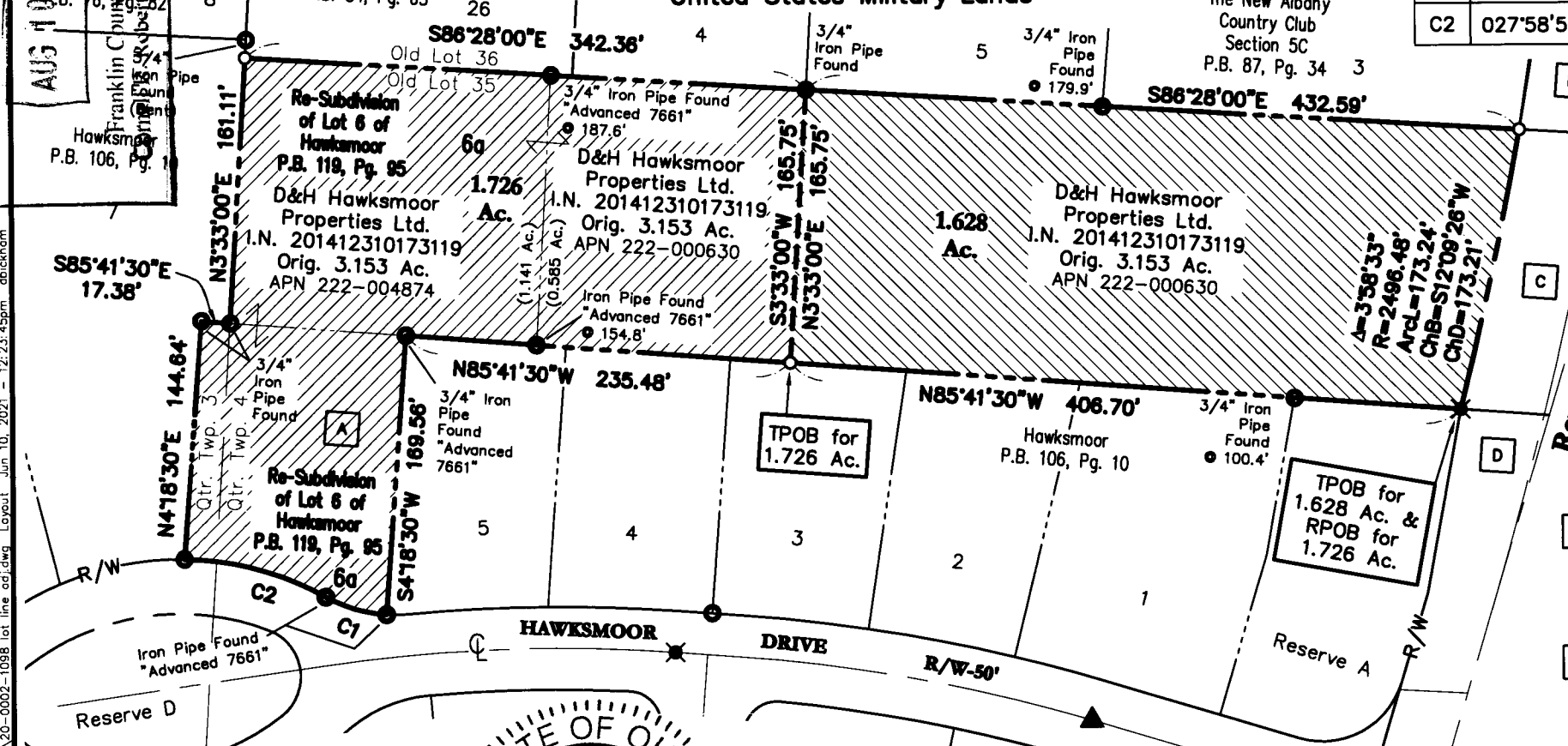


**Parcel Exhibit ~ 1.628 Ac. & 1.726 Ac.**

City of New Albany, Franklin County, Ohio  
 Quarter Townships 3 & 4, Township 2, Range 16  
 United States Military Lands

CURVE TABLE					
NO.	DELTA	RADIUS	LENGTH	CHORD BEARING	CHORD DIST.
C1	025°25'10"	87.00'	38.60'	N73°27'41"W	38.28'
C2	027°58'56"	183.00'	89.37'	N74°44'34"W	88.49'

AUG 10 2021  
 The New Albany Country Club  
 Section 5A  
 P.B. 76, Pg. 82  
 Franklin County Engineer  
 Douglas R. Hock  
 P.B. 106, Pg. 10



Iron pins set are 5/8" diameter rebar, 30" long and copped Advanced 7661.

This exhibit is based on information obtained from the Franklin County Auditor's and Franklin County Recorder's Office and information obtained from an actual field survey conducted in November of 2020.

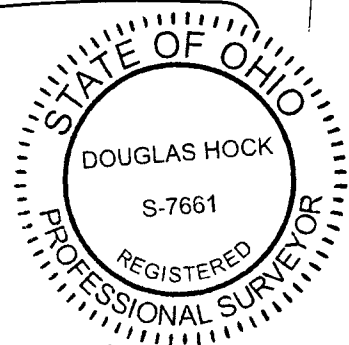
The basis of bearings used for this exhibit are based on the NAD83 Ohio State Plane Coordinate System, South Zone (NSRS 2007) which determines the bearing for the centerline of Kensington Court to be N04°18'30"E.

- A** D&H Hawksmoor Properties Ltd.  
 I.N. 201212310201283  
 Lot 6  
 APN 222-004874
- B** Franklin County Commissioners  
 O.R. 5149C07  
 Parcel No. 41WD:  
 0.366 Ac.
- C** Franklin County Commissioners  
 O.R. 4245E18  
 Parcel No. 40WD:  
 0.234 Ac.
- D** Franklin County Commissioners  
 O.R. 4547F04  
 Parcel No. 35WD:  
 0.577 Ac.

CITY OF NEW ALBANY  
 NO PLAT REQUIRED  
 APPROVED

Signature: *[Signature]* Date: 6-15-21

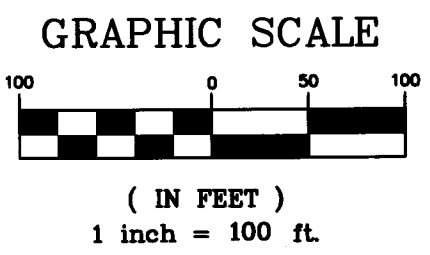
LA-2021-0063  
 ADVANCED CIVIL DESIGN, INC.



6/10/21  
 Date:

**Legend**

- Iron Rod Found
- Iron Pipe Found
- ⊗ PK Nail Found
- Iron Pin Set
- ⊗ PK Nail Set



DRAWN BY: DRB	JOB NO.: 20-0002-1098
DATE: 06-04-21	CHECKED BY: DRH

**ADVANCED CIVIL DESIGN ENGINEERS SURVEYORS**

781 Science Boulevard, Suite 100  
 Gahanna, Ohio 43230  
 ph 614.428.7750  
 fax 614.428.7755

Z:\20-0002-1098\DWG\PRODUCTION DRAWINGS\SURVEY\20-0002-1098 lot line adj.dwg Layout Jun 10, 2021 - 12:23:45pm abckham