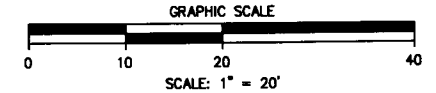
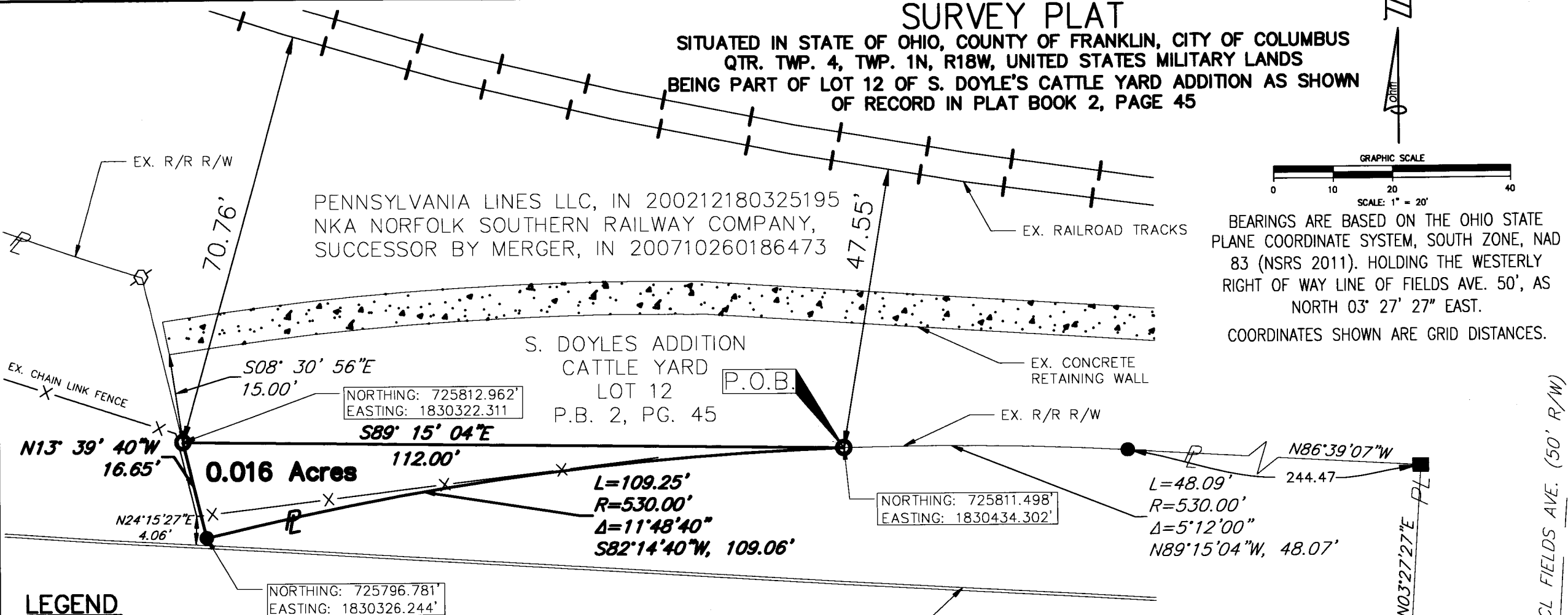


SURVEY PLAT

SITUATED IN STATE OF OHIO, COUNTY OF FRANKLIN, CITY OF COLUMBUS
 QTR. TWP. 4, TWP. 1N, R18W, UNITED STATES MILITARY LANDS
 BEING PART OF LOT 12 OF S. DOYLE'S CATTLE YARD ADDITION AS SHOWN
 OF RECORD IN PLAT BOOK 2, PAGE 45



BEARINGS ARE BASED ON THE OHIO STATE PLANE COORDINATE SYSTEM, SOUTH ZONE, NAD 83 (NSRS 2011). HOLDING THE WESTERLY RIGHT OF WAY LINE OF FIELDS AVE. 50', AS NORTH 03° 27' 27" EAST.
 COORDINATES SHOWN ARE GRID DISTANCES.

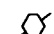





NORTHING: 725812.962'
 EASTING: 1830322.311

NORTHING: 725811.498'
 EASTING: 1830434.302'

NORTHING: 725796.781'
 EASTING: 1830326.244'

LEGEND

-  RAIL ON END FOUND
-  3/4" I.D. IPIPE SET
-  3/4" I.D. IPIPE FOUND
-  DRILL HOLE FOUND

IRON PIPES FOUND/SET ARE
 3/4" INSIDE DIAMETER IRON PIPE
 30" LONG WITH A YELLOW CAP
 STAMPED "OHM"

CENTRAL OHIO TRANSIT AUTHORITY
 10.818 ACRES
 O.R. 02509, PG. A06

PERTINENT DOCUMENTS

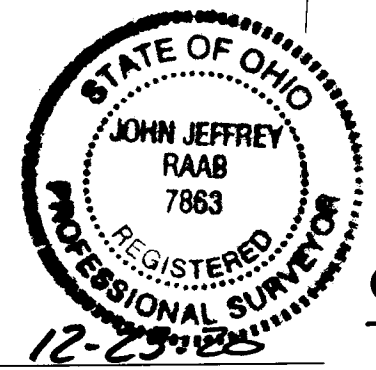
- BOUNDARY SURVEY PERFORMED BY OHM ADVISORS 2017
- SAMUEL DOYLE'S LOCKWIN ADDT. P.B. 1 PG. 3
- SAMUEL DOYLE'S CATTLE YARD ADDT. P.B. 2 PG. 45
- THOMAS L. BRENT'S SUB. P.B. 2 PG. 58

I HEREBY CERTIFY THIS PLAT WAS CREATED BY USING FIELD MEASUREMENTS OBTAINED BY AN ACTUAL FIELD SURVEY PERFORMED IN NOVEMBER 2017.

RECEIVED

AUG 10 2021

Franklin County Engineer
 Cornell R. Robertson, P.E., P.S.



John J. Raab
 JOHN J. RAAB, PS 7863



OHM
 ARCHITECTS ENGINEERS PLANNERS
 580 NORTH 4TH STREET
 SUITE 610
 COLUMBUS, OHIO 43215
 OHM-ADVISORS.COM

DRAWING PATH: P:\6101_6500\6377170050_001A_-_Fields_Ave_Boundary_Survey\RR_Split\Plot for Split_Revisions.dwg Jan 18, 2019 - 11:45am