

Plat of Survey Guider Winkle Partners, Inc.

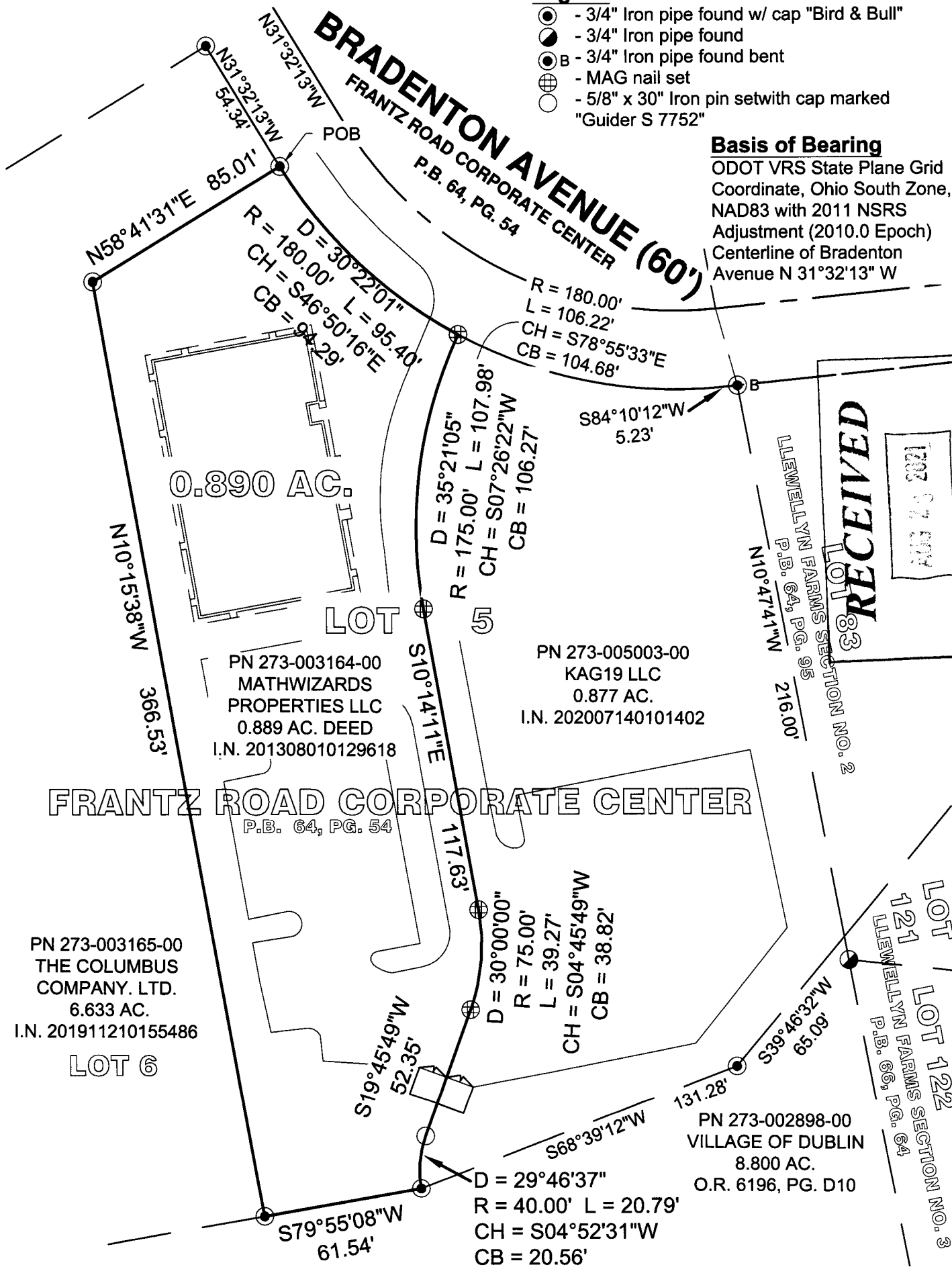
STATE OF OHIO, FRANKLIN COUNTY, CITY OF DUBLIN, VMS 2419

Legend

- - 3/4" Iron pipe found w/ cap "Bird & Bull"
- - 3/4" Iron pipe found
- ⊙ - 3/4" Iron pipe found bent
- ⊕ - MAG nail set
- - 5/8" x 30" Iron pin set with cap marked "Guider S 7752"

Basis of Bearing

ODOT VRS State Plane Grid
Coordinate, Ohio South Zone,
NAD83 with 2011 NSRS
Adjustment (2010.0 Epoch)
Centerline of Bradenton
Avenue N 31°32'13" W

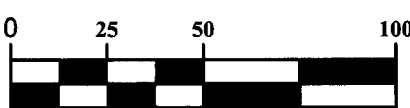
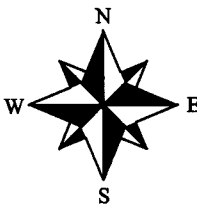


RECEIVED
AUG 23 2021
Franklin County Engineer
Cornell R. Robertson, P.E., P.S.

Surveyor's Certification:

I hereby certify that this plat is an accurate representation of a field survey made by me and is correct to the best of my knowledge.

Timothy L. Guider 07/25/2021
 Timothy L. Guider R.S. #7752 Date
 Guider Winkle Partners, Inc.
 19550 Delaware County Line Road
 Marysville, OH 43040
 (740) 666-8902



1 inch = 50 feet

Job # 21210