



Evans, Mechwart, Hambleton & Tilton, Inc.  
 Engineers • Surveyors • Planners • Scientists  
 5500 New Albany Road, Columbus, OH 43054  
 Phone: 614.775.4500 Toll Free: 888.775.3648  
 emht.com

# SURVEY OF ACREAGE PARCEL

## QUARTER TOWNSHIP 4, TOWNSHIP 1, RANGE 17

### UNITED STATES MILITARY DISTRICT

### CITY OF WHITEHALL, COUNTY OF FRANKLIN, STATE OF OHIO

Date: February 18, 2021  
 Scale: 1" = 100'  
 Job No: 2020-0397  
 Sheet No: 1 of 1

**SURVEY NOTE:**

This survey was prepared using documents of record, prior plats of survey, and observed evidence located by an actual field survey in April 2020.

**BASIS OF BEARINGS:**

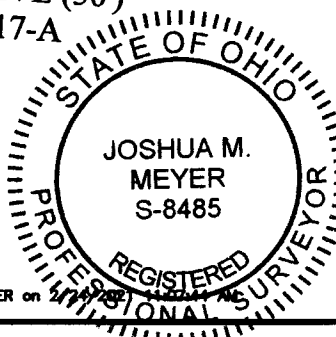
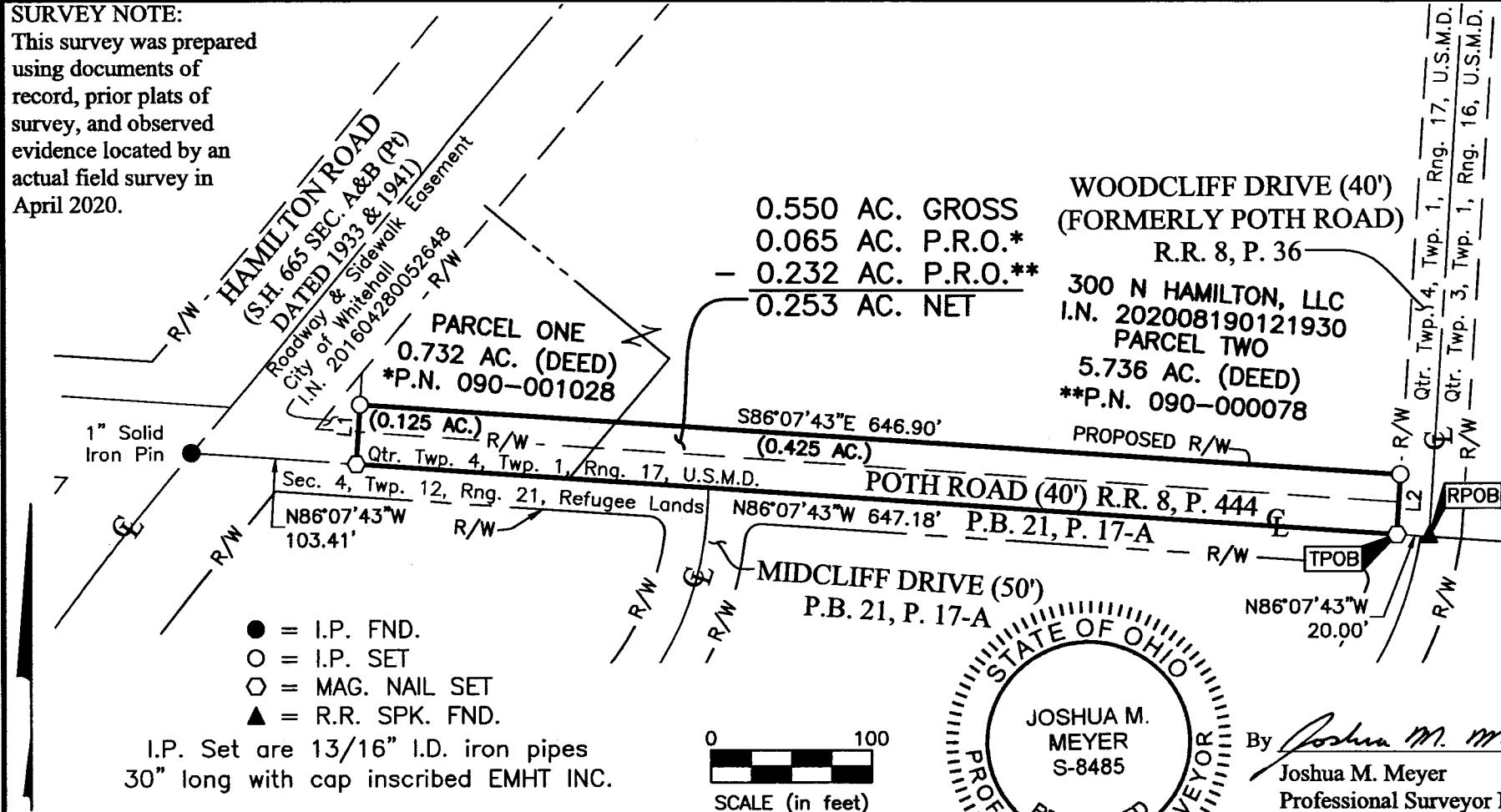
The bearings shown hereon are based on the Ohio State Plane Coordinate System, South Zone, NAD83 (NSRS 2007). Control for bearings was from coordinates of monuments FRANK 145 and FRANK 45, having a bearing of North 00 degrees 42 minutes 56 seconds East, as established by the Franklin County Engineering Department using Global Positioning System procedures and equipment.

LINE TABLE		
LINE	BEARING	DISTANCE
L1	N03°52'17"E	37.00'
L2	S03°27'05"W	37.00'

**RECEIVED**

APR 28 2021

Franklin County Engineer  
 Cornell R. Robertson, P.E., P.S.



By Joshua M. Meyer 2-18-2021  
 Joshua M. Meyer  
 Professional Surveyor No. 8485  
 jmeyer@emht.com  
 Date

J:\20200397\DWG\04SHEETS\BOUNDARY\20200397-VS-BNDY-02.DWG plotted by MEYER, JOSH on 2/24/2021 11:06:11 AM last saved by JMEYER on 2/18/2021 11:22:11 AM  
 Xrefs: