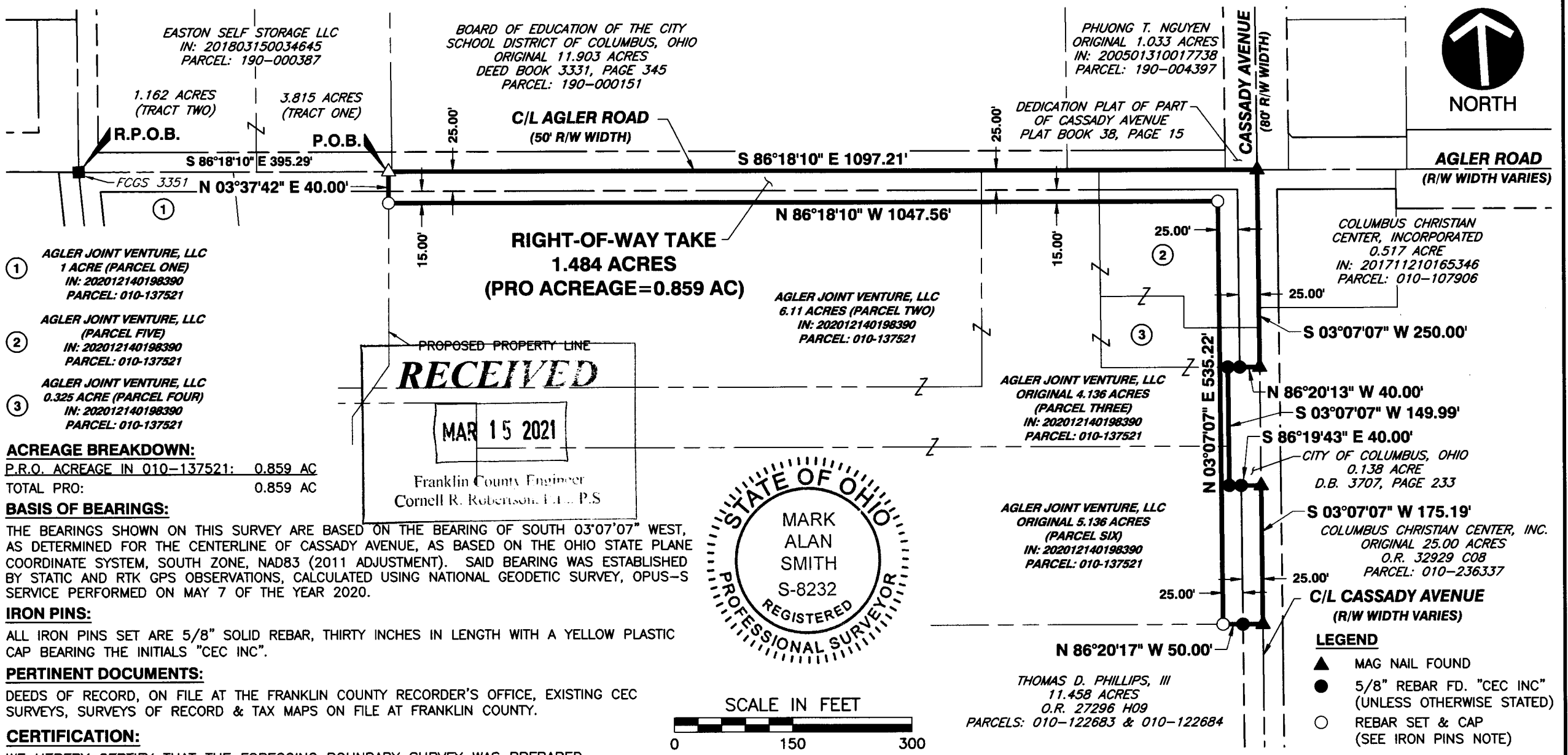


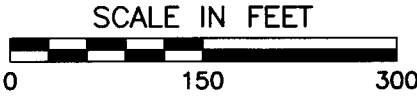
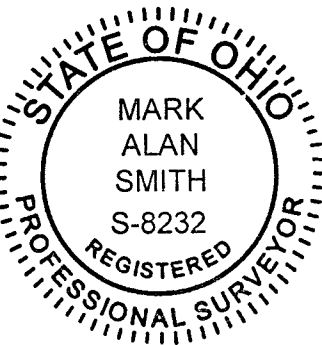
P:\300-000\300-108-1081-Survey\Draw\300108-SV01-SRV-RW 1.484 AC.dwg\LAYOUI1.LS:(1/1/2021 - kasmlh) - LP: 1/11/2021 12:40 PM  
 EXHIBIT - A (PS 3/3)



RECEIVED

MAR 15 2021

Franklin County Engineer  
Cornell R. Robertson, E.L., P.S.



MARK ALAN SMITH  
 PROFESSIONAL LAND SURVEYOR NO. 8232

DATE  
 01/21/2021

**Civil & Environmental Consultants, Inc.**  
 250 Old Wilson Bridge Road · Suite 250 · Worthington, OH 43085  
 614-540-6633 · 888-598-6808  
 www.cecinc.com

DRAWN BY:	KAS	CHECKED BY:	MJW
DATE:	JANUARY 2021	DWG SCALE:	1"=150'

## PLAT OF SURVEY

STATE OF OHIO, COUNTY OF FRANKLIN, CITY OF COLUMBUS,  
 QUARTER TOWNSHIP 3, TOWNSHIP 1, RANGE 17,  
 UNITED STATES MILITARY LANDS

1.484 ACRE RIGHT-OF-WAY TAKE

APPROVED BY:	EXHIBIT:
 MARK ALAN SMITH	SRV