



Evans, Mechwart, Hambleton & Tilton, Inc.  
 Engineers • Surveyors • Planners • Scientists  
 5500 New Albany Road, Columbus, OH 43054  
 Phone: 614.775.4500 Toll Free: 888.775.3648  
 emht.com

# SURVEY OF ACREAGE PARCEL

SECTION 21, TOWNSHIP 4, RANGE 22

CONGRESS LANDS EAST OF SCIOTO

CITY OF COLUMBUS, COUNTY OF FRANKLIN, STATE OF OHIO

Date: April 14, 2021

Scale: 1" = 100'

Job No: 2020-0254

Sheet No: 1 of 1

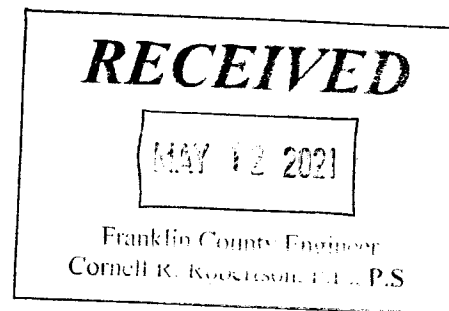
EXHIBIT-A (P. 2/2)

U.S. ROUTE 23  
 (WIDTH VARIES)  
 (PUBLIC)  
 A.K.A. SOUTH HIGH  
 STREET  
 F.K.A. COLUMBUS AND  
 CHILLOCOTHE PIKE

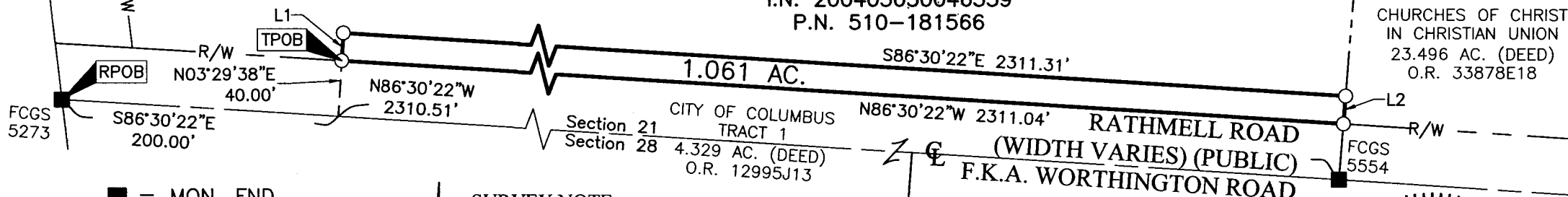
LINE TABLE		
LINE	BEARING	DISTANCE
L1	N03°29'38"E	20.00'
L2	S04°15'33"W	20.00'

TAMARACK ENTERPRISES II, L.P.

I.N. 200108080182912  
 I.N. 200107230167042  
 I.N. 200107230167043  
 I.N. 200107230167044  
 I.N. 200107230167045  
 I.N. 200107230167046  
 PFK COMPANY II, LLC  
 TRACT ONE  
 213.029 AC. (DEED)  
 I.N. 200403030046559  
 P.N. 510-181566

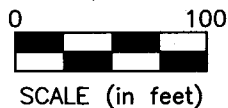


CHURCHES OF CHRIST  
 IN CHRISTIAN UNION  
 23.496 AC. (DEED)  
 O.R. 33878E18



- = MON. FND.
- = I.P. FND.
- = I.P. SET
- = MAG. NAIL FND.
- = MAG. NAIL SET

I.P. Set are 13/16" I.D. iron pipes  
 30" long with cap inscribed EMHT INC.



**SURVEY NOTE:**

This survey was prepared using documents of record, prior plats of survey, and observed evidence located by an actual field survey, in April 2016.

**BASIS OF BEARINGS:**

The Bearings shown hereon are based on the Ohio State Plane Coordinate System South Zone as per NAD83 (NSRS 2007). Control for bearings was from coordinates of monuments FRANK 17 and FRANK 117, having a bearing of South 07° 33' 00" East, established by the Franklin County Engineering Department, using Global Positioning System procedures and equipment.

By *Joshua M. Meyer*  
 Joshua M. Meyer  
 Professional Surveyor No. 8485  
 jmeyer@emht.com

