



Evans, Mechwart, Hambleton & Tilton, Inc.
 Engineers • Surveyors • Planners • Scientists
 5500 New Albany Road, Columbus, OH 43054
 Phone: 614.775.4500 Toll Free: 888.775.3648

emht.com

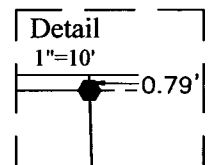
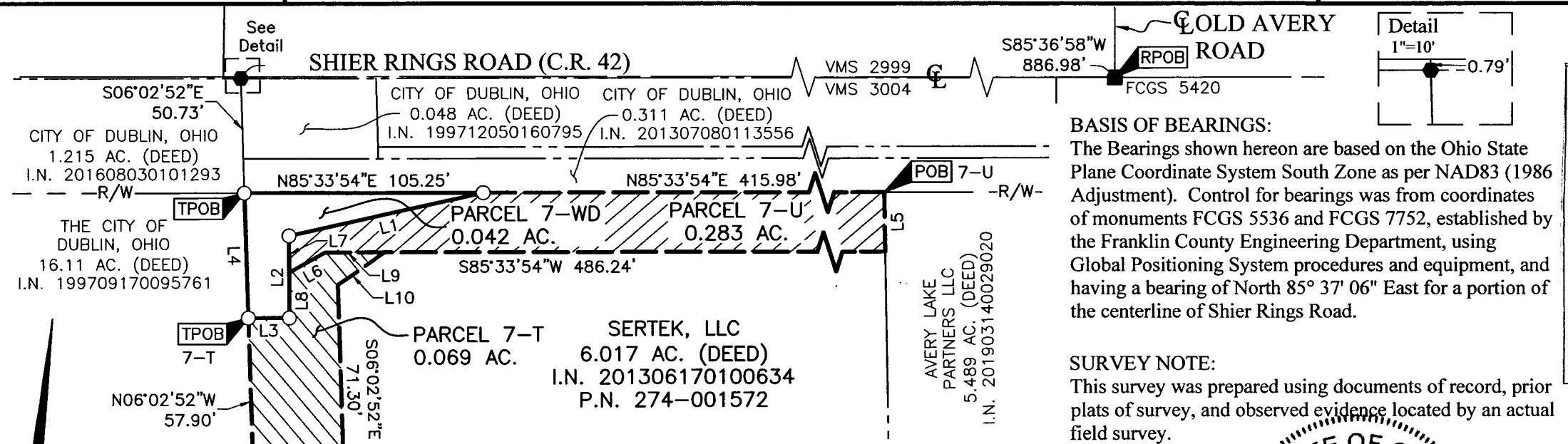
SURVEY OF ACREAGE PARCEL

VIRGINIA MILITARY DISTRICT SURVEY NUMBER 3004
 CITY OF DUBLIN, COUNTY OF FRANKLIN, STATE OF OHIO

Date: May 29, 2020

Scale: 1" = 60'

Job No: 2019-0835



BASIS OF BEARINGS:

The Bearings shown hereon are based on the Ohio State Plane Coordinate System South Zone as per NAD83 (1986 Adjustment). Control for bearings was from coordinates of monuments FCGS 5536 and FCGS 7752, established by the Franklin County Engineering Department, using Global Positioning System procedures and equipment, and having a bearing of North 85° 37' 06" East for a portion of the centerline of Shier Rings Road.

SURVEY NOTE:

This survey was prepared using documents of record, prior plats of survey, and observed evidence located by an actual field survey.

- = MON. FND.
- = I.P. SET
- = MAG. NAIL FND.

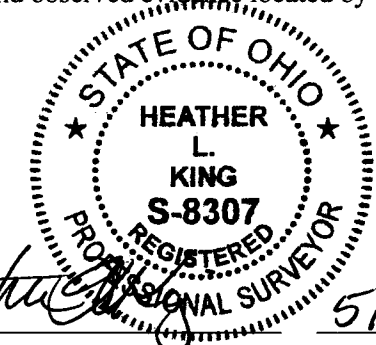
I.P. Set are 13/16" I.D. iron pipes 30" long with cap inscribed EMHT INC.



GRAPHIC SCALE (in feet)

LINE	BEARING	DISTANCE
L1	S73°12'11"W	87.70'
L2	S04°26'06"E	35.85'
L3	S85°33'54"W	18.05'
L4	N06°02'52"W	54.64'
L5	S05°21'07"E	26.00'

LINE	BEARING	DISTANCE
L6	S56°36'42"W	18.09'
L7	N04°26'06"W	15.98'
L8	N04°26'06"W	19.87'
L9	N85°33'54"E	26.67'
L10	S51°35'59"W	25.25'



By *Heather L. King* Date *5/29/20*
 Heather L. King
 Professional Surveyor No. 8307
 hking@emht.com

RECEIVED

MAY 17 2020

Franklin County Engineer
 Cornell R. Robertson, P.E., P.S.

J:\20190835\DWG\04SHEETS\BOUNDARY\20190835-VS-BNDY-07.DWG plotted by PHILPOTT, ANDREW on 8/19/2020 12:51:40 PM last saved by HKING on 7/15/2020 1:46:15 PM