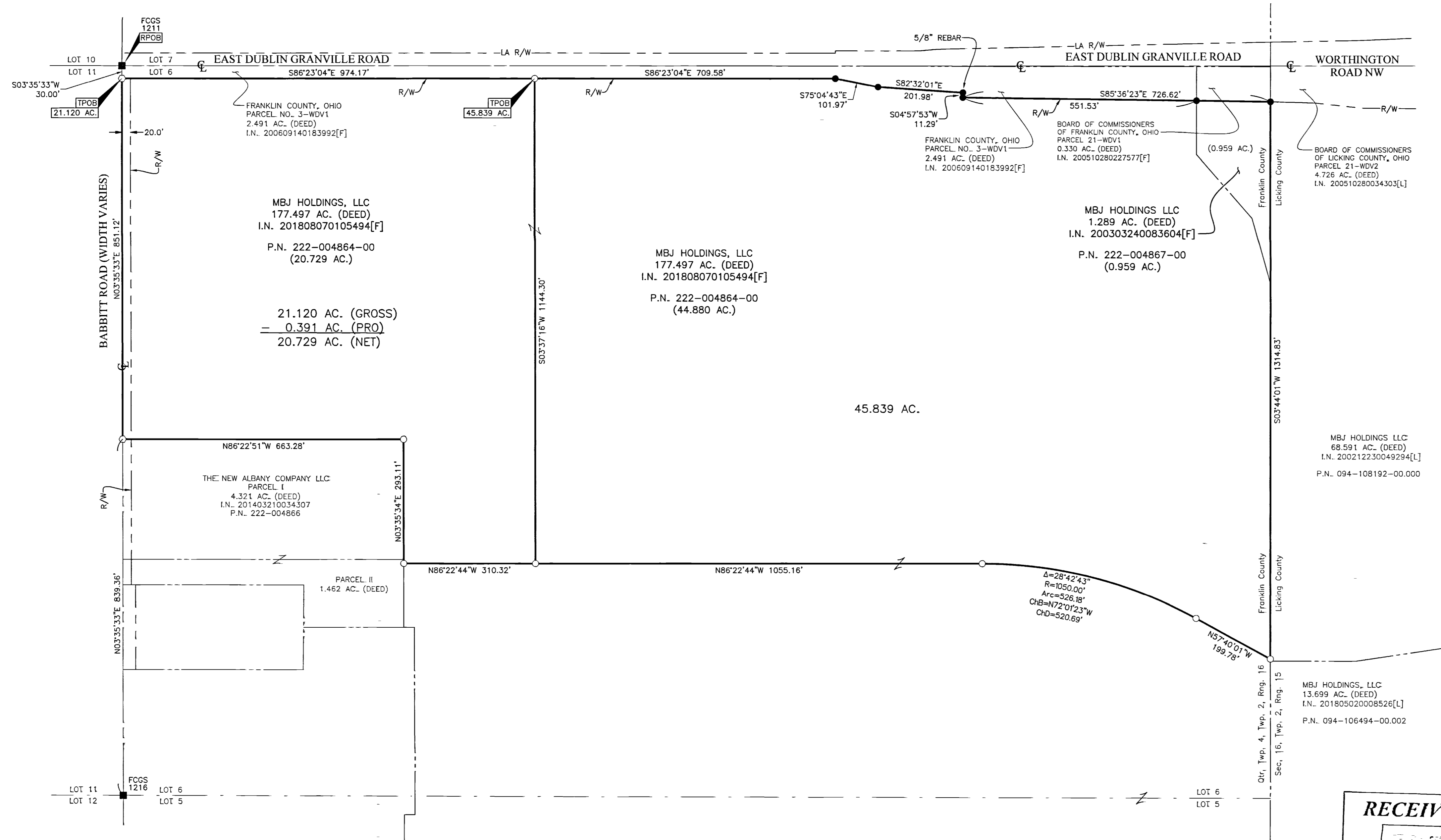


SURVEY OF ACREAGE PARCELS

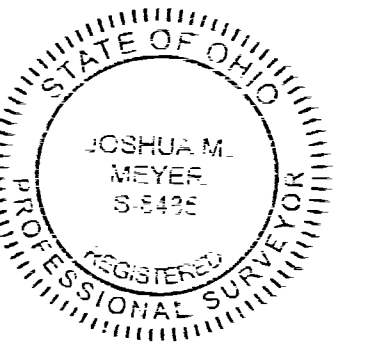
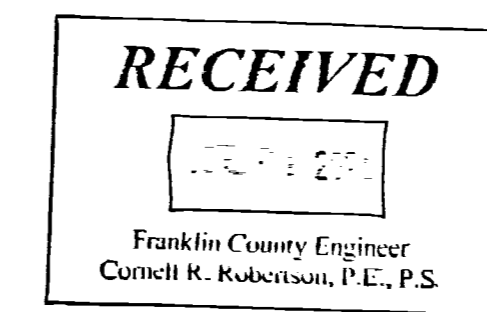
LOT 6, QUARTER TOWNSHIP 4, TOWNSHIP 2, RANGE 16, UNITED STATES MILITARY DISTRICT CITY OF NEW ALBANY, COUNTY OF FRANKLIN, STATE OF OHIO



NOTE:
[F] = Franklin County Recorder's Office.
[L] = Licking County Recorder's Office.

BASIS OF BEARINGS:
The bearings shown hereon are based on the Ohio State Plane Coordinate System, South Zone, NAD83 (1986 Adjustment). Control for bearings was from coordinates of monuments Frank 80 and Frank 180, having a bearing of North 85° 57' 24\"/>

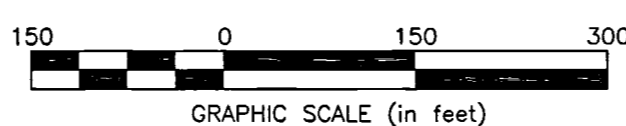
SURVEY NOTE:
This survey was prepared using documents of record, prior plats of survey, and observed evidence located by an actual field survey in 1999, 2001, 2002, 2015, 2017 and 2018.



By *Joshua M. Meyer* 6-25-2021 Date
Joshua M. Meyer
Professional Surveyor No. 8485
jmeyer@emht.com

- = MON. FND.
- = 5/8" REBAR W/ALUM. CAP "ODOT" FND. (UNLESS OTHERWISE NOTED)
- = I.P. SET
- = MAG. NAIL SET

I.P. Set are 13/16" I.D. iron pipes 30" long with cap inscribed EMHT INC.



EMHT Evans, Mechwart, Hambleton & Tilton, Inc. Engineers • Surveyors • Planners • Scientists 6500 New Albany Road, Columbus, OH 43054 Phone: 614.775.4500 toll free: 888.775.3648 emht.com		Date: June 25, 2021
Scale: 1" = 150'		Job No: 2021-0441
Sheet: 1 of 1		
REVISIONS		
MARK	DATE	DESCRIPTION