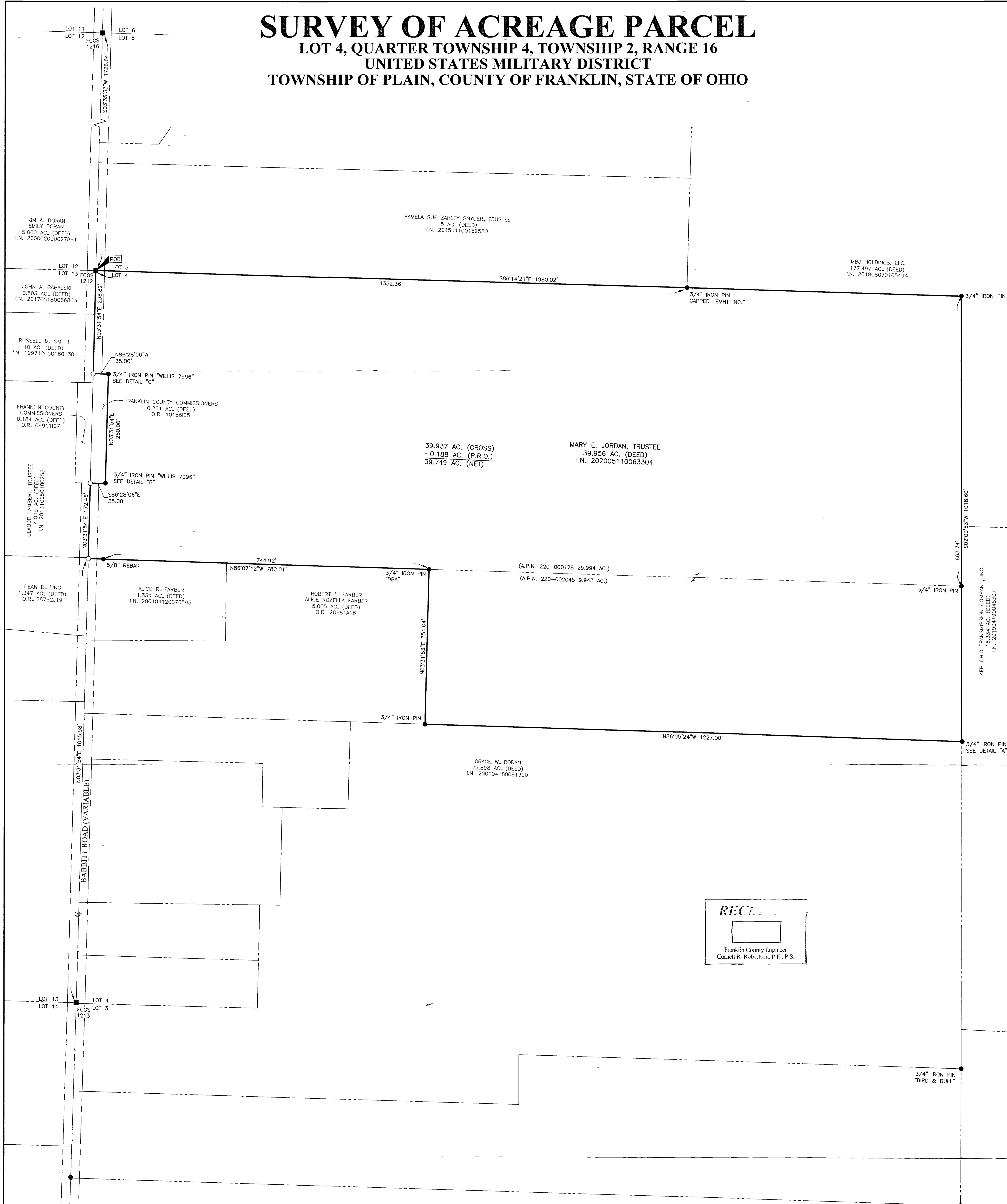


SURVEY OF ACREAGE PARCEL

LOT 4, QUARTER TOWNSHIP 4, TOWNSHIP 2, RANGE 16
UNITED STATES MILITARY DISTRICT
TOWNSHIP OF PLAIN, COUNTY OF FRANKLIN, STATE OF OHIO



39.937 AC. (GROSS)
-0.188 AC. (P.R.O.)
39.749 AC. (NET)

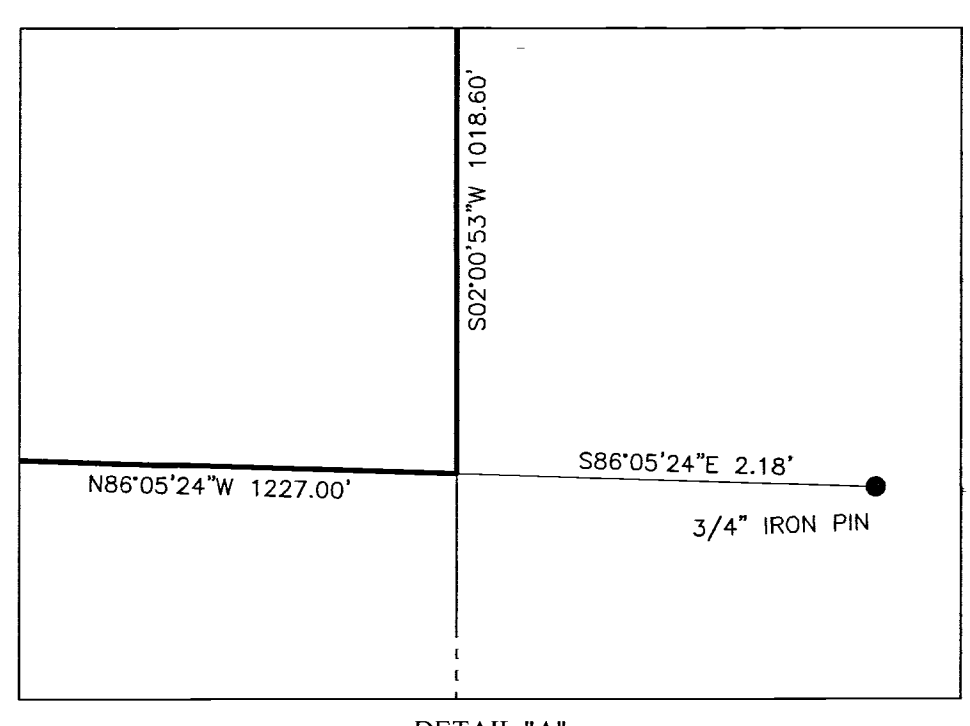
MARY E. JORDAN, TRUSTEE
39.956 AC. (DEED)
I.N. 202005110063304

GRACE W. DORAN
29.898 AC. (DEED)
I.N. 200104180081300

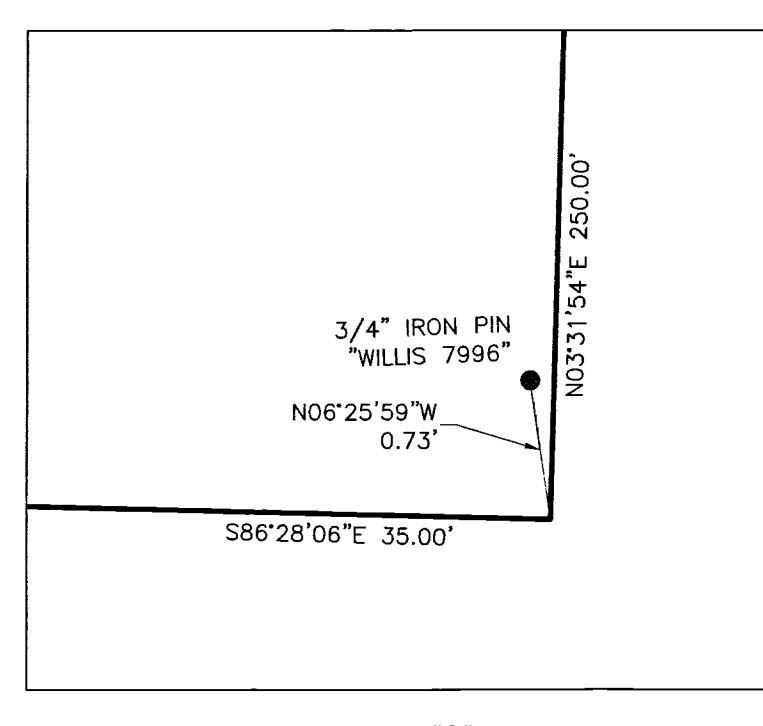
RECL
Franklin County Engineer
Cornell R. Robertson, P.E., P.S.

BASIS OF BEARINGS:
The bearings shown hereon are based on the Ohio State Plane Coordinate System, South Zone, NAD83 (1986 Adjustment). Control for bearings was from coordinates of monuments FRANK80 and FRANK180, having a bearing of North 85° 57' 24" East, as established by the Franklin County Engineering Department using Global Positioning System procedures and equipment.

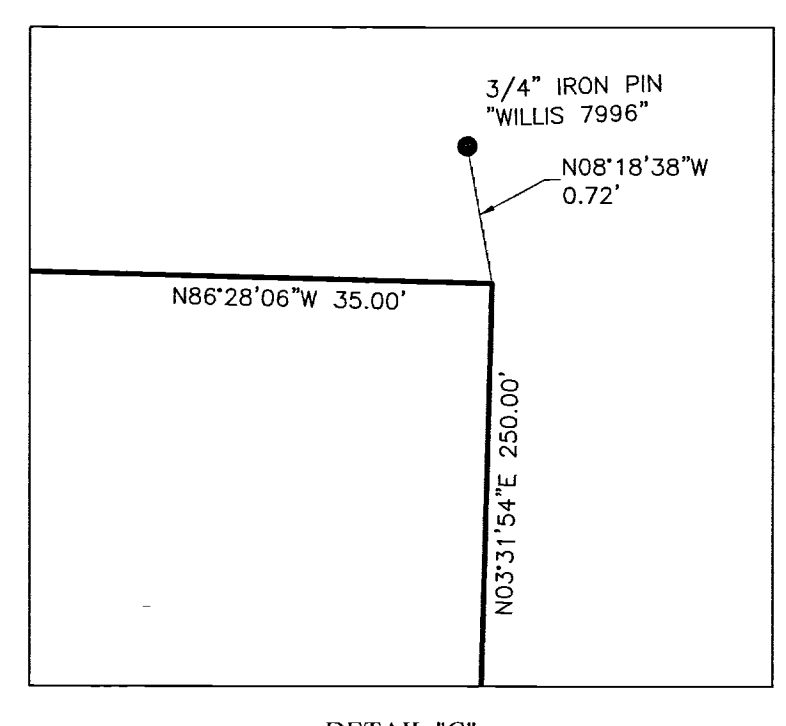
SURVEY NOTE:
This survey was prepared using documents of record, prior plats of survey, and observed evidence located by an actual field survey.



DETAIL "A"

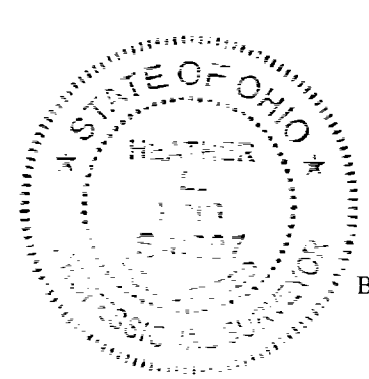
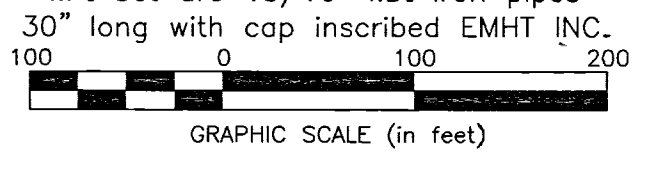


DETAIL "B"



DETAIL "C"

- = STONE FND.
 - = MON. FND.
 - = I.P. FND.
 - = I.P. SET
 - = MAG. NAIL FND.
 - = MAG. NAIL SET
 - ▲ = R.R. SPK. FND.
 - = P.K. NAIL FND.
- I.P. Set are 13/16" I.D. iron pipes 30" long with cap inscribed EMHT INC.



By *Heather L. King* Date *2/16/21*
Heather L. King
Professional Surveyor No. 8307
hking@emht.com

EMHT		Date: January 18, 2021
Evans, Metchwart, Hambleton & Tilton, Inc. Engineers • Surveyors • Planners • Scientists 5500 New Albany Road, Columbus, OH 43054 Phone: 614.775.4500 Toll Free: 888.775.3648		Scale: 1" = 100'
emht.com		Job No: 2021-0005
		Sheet: 1 of 1
REVISIONS		
MARK	DATE	DESCRIPTION