

67D



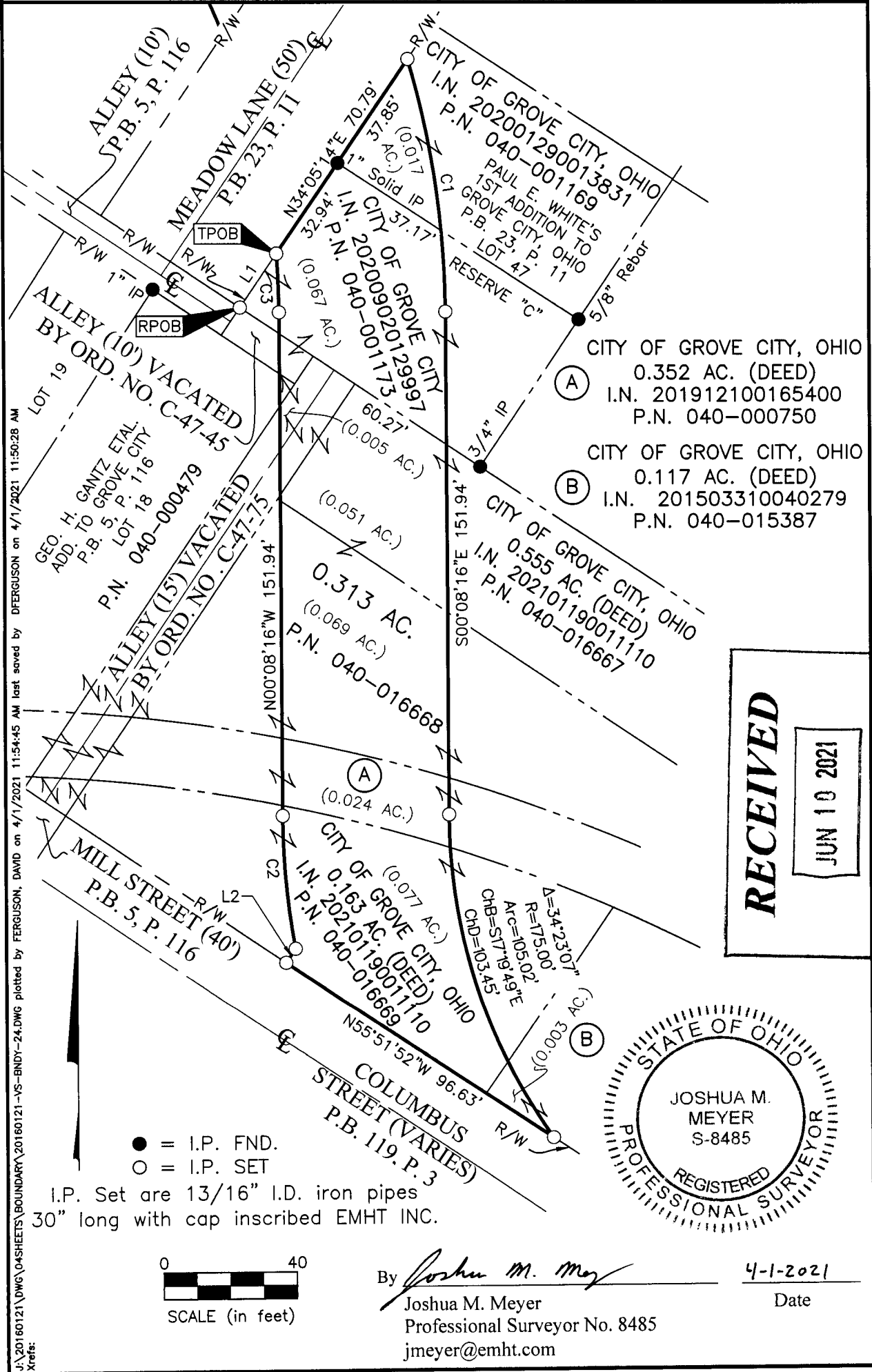
Evans, Mechwart, Hambleton & Tilton, Inc.
Engineers • Surveyors • Planners • Scientists
5500 New Albany Road, Columbus, OH 43054
Phone: 614.775.4500 Toll Free: 888.775.3648
emht.com

SURVEY OF ACREAGE PARCEL

VIRGINIA MILITARY SURVEY NUMBER 1388

CITY OF GROVE CITY, COUNTY OF FRANKLIN, STATE OF OHIO

Date: April 1, 2021 Scale: 1" = 40' Job No: 2016-0121 Sheet No: 1 of 2



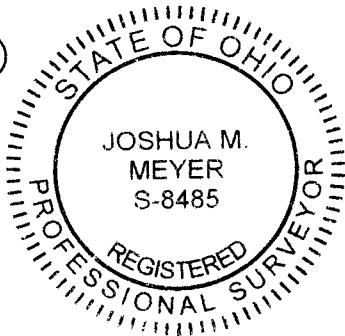
J:\20160121\DWG\04SHEETS\BOUNDARY\20160121-VS-BNDY-24.DWG plotted by FERGUSON, DAVID on 4/1/2021 11:54:45 AM last saved by DEERGUSON on 4/1/2021 11:50:28 AM Xrefs:

- CITY OF GROVE CITY, OHIO
 0.352 AC. (DEED)
 I.N. 201912100165400
 P.N. 040-000750
- CITY OF GROVE CITY, OHIO
 0.117 AC. (DEED)
 I.N. 201503310040279
 P.N. 040-015387

RECEIVED

JUN 10 2021

Franklin County Engineer
Cornell R. Robertson, P.E., P.S.



By *Joshua M. Meyer* Date 4-1-2021

Joshua M. Meyer
Professional Surveyor No. 8485
jmeyer@emht.com



Evans, Mechwart, Hambleton & Tilton, Inc.
 Engineers • Surveyors • Planners • Scientists
 5500 New Albany Road, Columbus, OH 43054
 Phone: 614.775.4500 Toll Free: 888.775.3648
 emht.com

SURVEY OF ACREAGE PARCEL

VIRGINIA MILITARY SURVEY NUMBER 1388

CITY OF GROVE CITY, COUNTY OF FRANKLIN, STATE OF OHIO

Date: APRIL 1, 2021 Scale: 1" = 40' Job No: 2016-0121 Sheet No: 2 of 2

CURVE TABLE					
CURVE	DELTA	RADIUS	ARC	CH. BEARING	CH. DIST.
C1	16°01'55"	276.02'	77.23'	S08°15'46"E	76.98'
C2	10°17'09"	225.00'	40.39'	N05°16'50"W	40.34'
C3	4°30'23"	225.00'	17.70'	N02°23'27"W	17.69'

LINE TABLE		
LINE	BEARING	DISTANCE
L1	N34°05'14"E	19.58'
L2	N34°07'35"E	5.13'

SURVEY NOTE:

This survey was prepared using documents of record, prior plats of survey, and observed evidence located by an actual field survey in May 2002, June 2010, October 2013, October 2014 and November 2016.

BASIS OF BEARINGS:

The bearings shown on this plat are based on the Ohio State Plane Coordinate System, South Zone, NAD83 (CORS96). Said bearings originated from a field traverse which was tied (referenced) to said coordinate system by GPS observations and observations of selected CORS base stations in the National Spatial Reference System. The portion of the southerly right-of-way line of Mill Street, having a bearing of South 55° 51' 52" East, is designated the "basis of bearing" for this survey.

RECEIVED

JUN 10 2021

Franklin County Engineer
 Cornell R. Robertson, P.E., P.S.

J:\20160121\DWG\04SHEETS\BOUNDARY\20160121-VS-BNDY-24.DWG plotted by FERGUSON, DAVID on 4/1/2021 11:54:45 AM last saved by DFERGUSON on 4/1/2021 11:50:28 AM Xrefs: