

E7C, E7F

EXHIBIT OF A 40' HIGHWAY EASEMENT

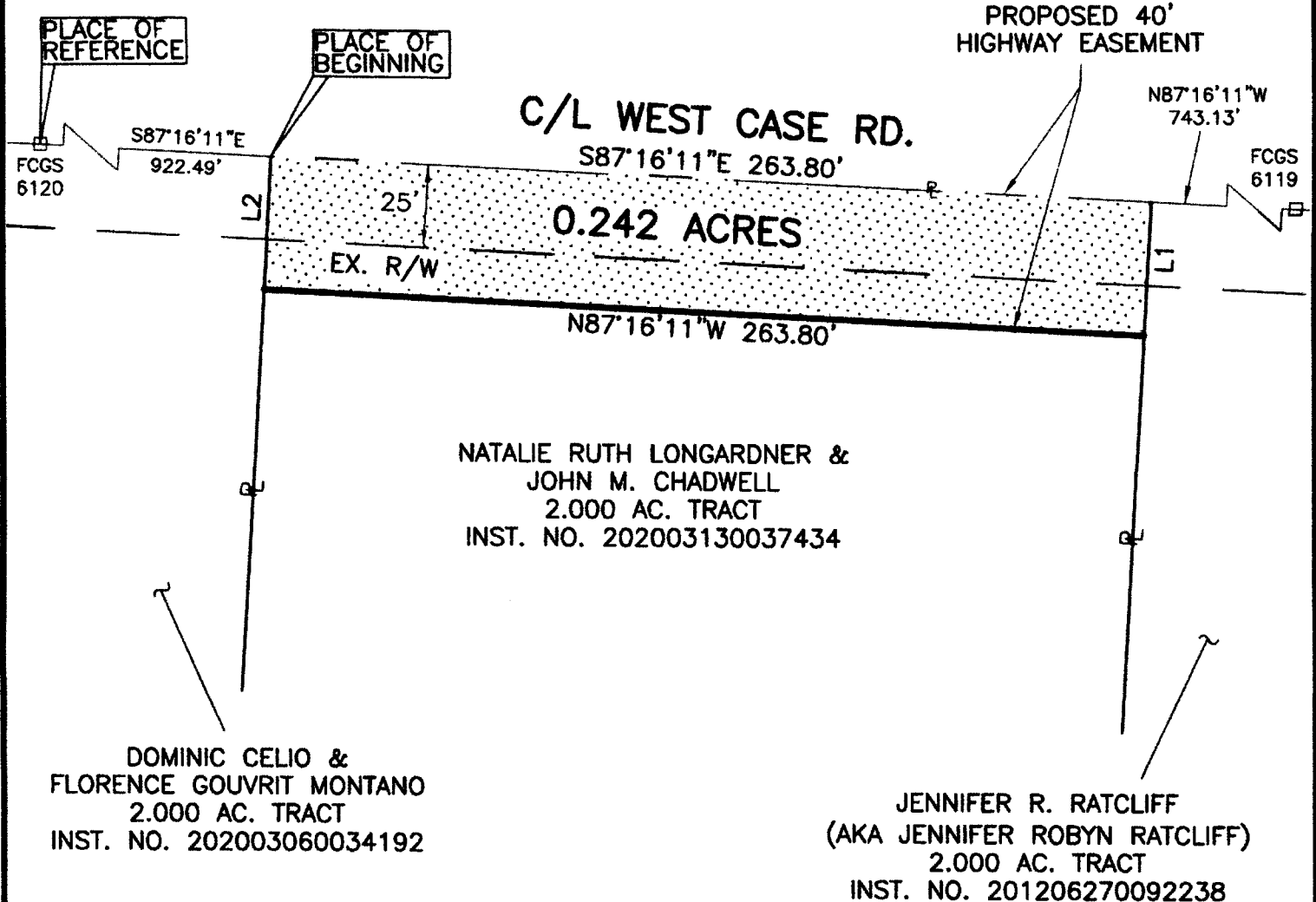
SITUATE IN THE STATE OF OHIO, COUNTY OF FRANKLIN, TOWNSHIP OF PERRY, BEING A PART OF QTR. TWP. 4, T2N R19W, UNITED STATES MILITARY DISTRICT



GRID NORTH



Course	Bearing	Distance
L1	S03°13'32"W	40.00'
L2	N03°13'32"E	40.00'



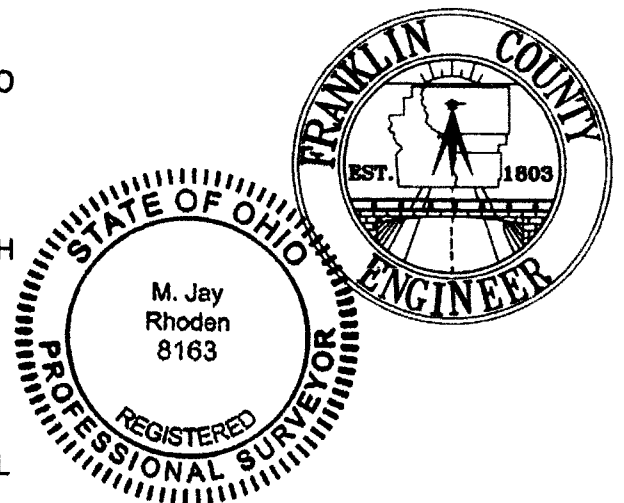
LEGEND

- PROPOSED 40' HIGHWAY EASEMENT

BASIS OF BEARINGS:

THE BEARINGS SHOWN HEREON ARE BASED ON THE OHIO STATE PLANE COORDINATE SYSTEM, SOUTH ZONE AND NORTH AMERICAN DATUM OF 1983, (2011), AS ESTABLISHED FROM A GPS SURVEY PERFORMED BY THE FRANKLIN COUNTY ENGINEER'S SURVEY DEPARTMENT IN 2021. ORIGINATING ON ODOT CORS STATION "COLB", WITH A BEARING OF (S87°16'11"E), AS SHOWN ALONG THE CENTERLINE OF WEST CASE RD.

THIS PLAT WAS PREPARED IN THE OFFICE OF THE FRANKLIN COUNTY ENGINEER BY M. JAY RHODEN, P.S. OHIO REGISTERED SURVEYOR NO. 8163 FROM AN ACTUAL FIELD SURVEY PERFORMED IN MAY, 2021, AND FROM DEEDS AND PLATS OF RECORD IN THE RECORDER'S OFFICE, FRANKLIN COUNTY, OHIO.



M. Jay Rhoden
 M. JAY RHODEN
 OHIO REGISTERED SURVEYOR NO. 8163
 DATE 05/27/21

DATE: 05/26/21	DRAWING: 1779 West Case	
	DRAWN BY: MJR	
REVISIONS		
DATE	DESCRIPTION	BY