

A2D, A3D



Evans, Mechwart, Hambleton & Tilton, Inc.  
Engineers • Surveyors • Planners • Scientists  
5500 New Albany Road, Columbus, OH 43054  
Phone: 614.775.4500 Toll Free: 888.775.3648  
emht.com

# SURVEY OF ACREAGE PARCEL

## VIRGINIA MILITARY DISTRICT SURVEY NUMBER 2999 CITY OF DUBLIN, COUNTY OF FRANKLIN, STATE OF OHIO

Date: May 29, 2020

Scale: 1" = 50'

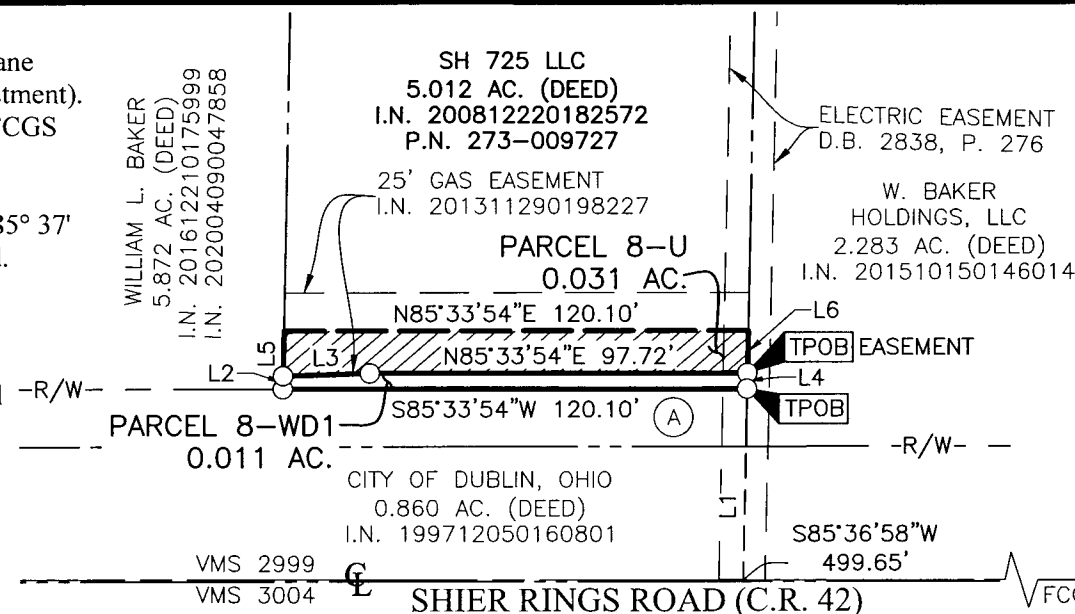
Job No: 2019-0835

### BASIS OF BEARINGS:

The Bearings shown hereon are based on the Ohio State Plane Coordinate System South Zone as per NAD83 (1986 Adjustment). Control for bearings was from coordinates of monuments FCGS 5536 and FCGS 7752, established by the Franklin County Engineering Department, using Global Positioning System procedures and equipment, and having a bearing of North 85° 37' 06" East for a portion of the centerline of Shier Rings Road.

### SURVEY NOTE:

This survey was prepared using documents of record, prior plats of survey, and observed evidence located by an actual field survey.



LINE TABLE		
LINE	BEARING	DISTANCE
L1	N03°13'35"W	49.57'
L2	N03°12'50"W	3.40'
L3	N83°48'58"E	22.41'
L4	S03°13'35"E	4.08'
L5	N03°12'50"W	11.69'
L6	S03°13'35"E	11.00'

(A) CITY OF DUBLIN, OHIO  
0.136 AC. (DEED)  
I.N. 199804160090661

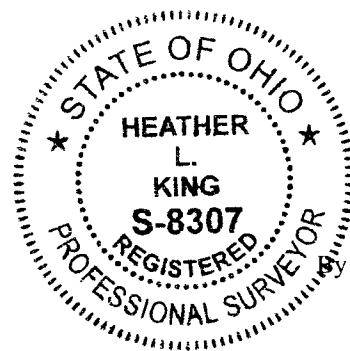
■ = MON. FND.

○ = I.P. SET

I.P. Set are 13/16" I.D. iron pipes  
30" long with cap inscribed EMHT INC.



GRAPHIC SCALE (in feet)



*Heather L. King*  
Heather L. King  
Professional Surveyor No. 8307  
hking@emht.com

5/29/20  
Date

RECEIVED  
 MAY 06 2021  
 Franklin County Engineer  
 Council: Robert S. P.A., P.S.