

K3D



Evans, Mechwart, Hambleton & Tilton, Inc.  
Engineers • Surveyors • Planners • Scientists  
5500 New Albany Road, Columbus, OH 43054  
Phone: 614.775.4500 Toll Free: 888.775.3648  
emht.com

# SURVEY OF ACREAGE PARCEL

## HALF SECTION 7, TOWNSHIP 16, RANGE 20

### REFUGEE LANDS

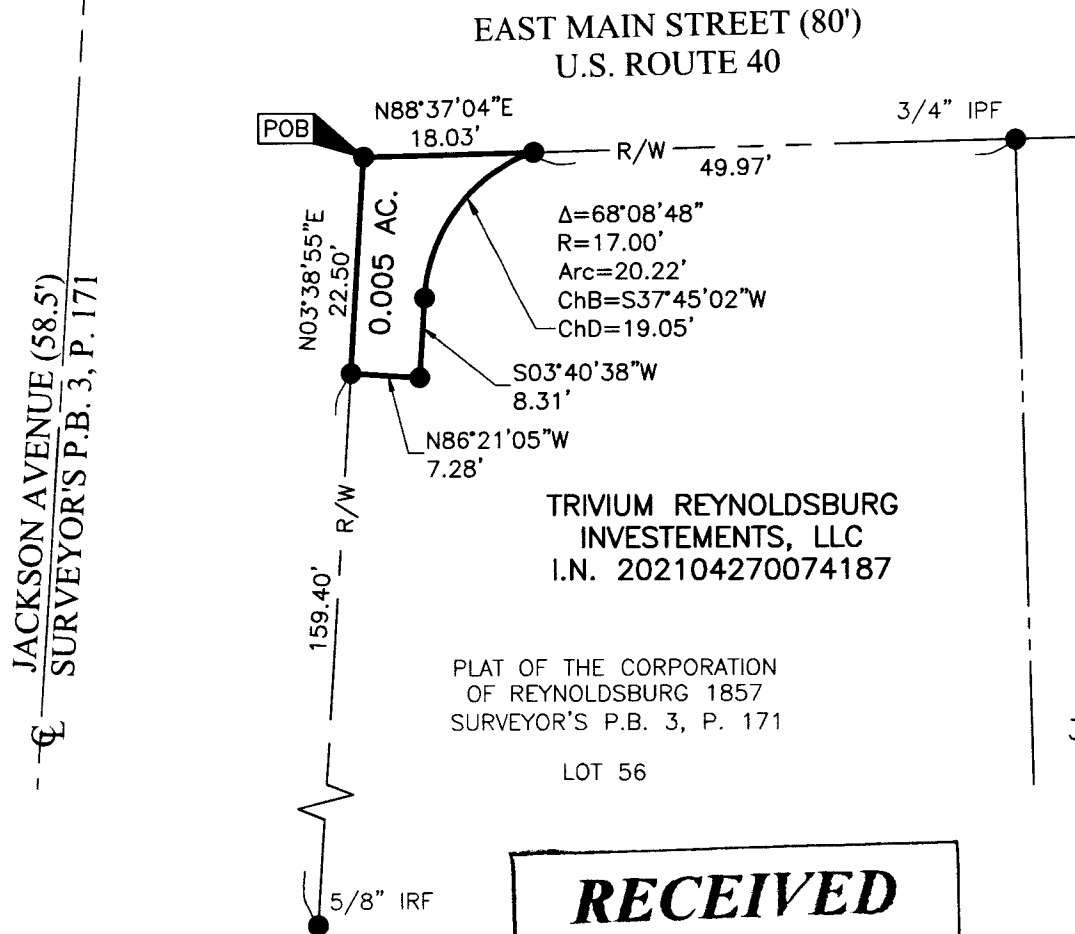
#### CITY OF REYNOLDSBURG, COUNTY OF FRANKLIN, STATE OF OHIO

Date: May 3, 2021

Scale: 1" = 20'

Job No: 2020-0532

Sheet No: 1 of 1



#### BASIS OF BEARINGS:

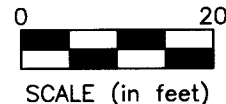
The bearings are based on the Ohio State Plane Coordinate System, South Zone, NAD83 (1986 Adjustment). Control for bearings was from coordinates of monuments REYNOLDSBURG and HOWELL2, having a bearing of North 56°30'34" West, as established by the Franklin County Engineering Department using Global Positioning Systems procedures and equipment.

#### SURVEY NOTE:

This survey was prepared using documents of record, prior plats of survey, and observed evidence located by an actual field survey in July 2020.

- = STONE FND.
- = MON. FND.
- = I.P. FND.
- = I.P. SET
- ◆ = MAG. NAIL FND.
- ◇ = MAG. NAIL SET
- ▲ = R.R. SPK. FND.
- ◆ = P.K. NAIL FND.

I.P. Set are 13/16" I.D. iron pipes 30" long with cap inscribed EMHT INC.



#### PRELIMINARY APPROVAL

Cornell R. Robertson, P.E., P.S.

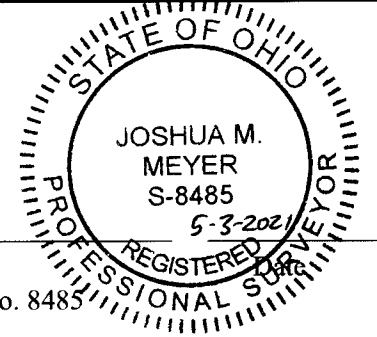
BY: *jwiggins*  
05/04/2021



PENDING ORIGINALS

\*Submitted via digital format

Please return this approval, along with the original description and plat of survey, as prepared by the surveyor, signed, sealed and dated in blue ink.



By *Joshua M. Meyer*  
Joshua M. Meyer  
Professional Surveyor No. 8485  
jmeyer@emht.com

# RECEIVED

Franklin County Engineer  
Cornell R. Robertson, P.E., P.S.