



Evans, Mechwart, Hambleton & Tilton, Inc.
 Engineers • Surveyors • Planners • Scientists
 5500 New Albany Road, Columbus, OH 43054
 Phone: 614.775.4500 Toll Free: 888.775.3648

emht.com

SURVEY OF ACREAGE PARCEL

VIRGINIA MILITARY SURVEY NUMBER 1388

CITY OF GROVE CITY, COUNTY OF FRANKLIN, STATE OF OHIO

Date: April 1, 2021

Scale: 1" = 40'

Job No: 2016-0121

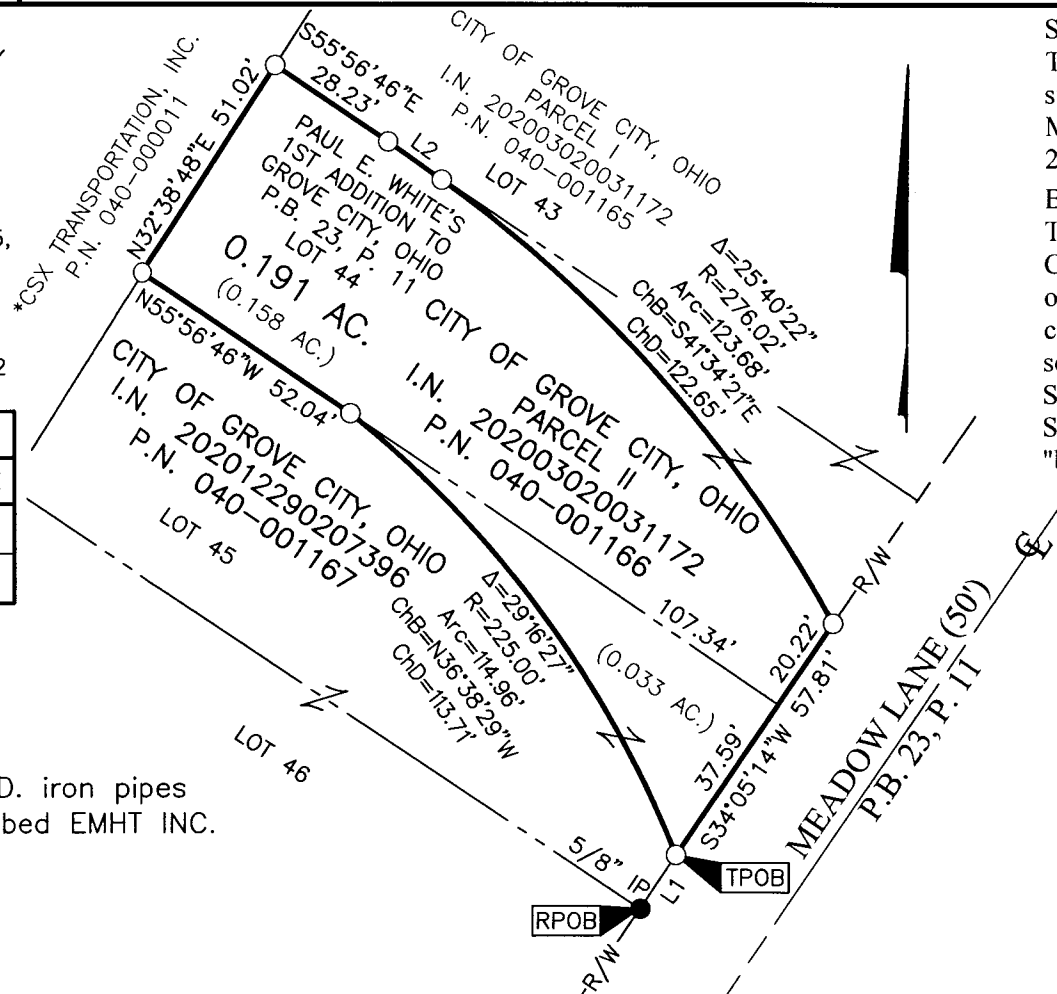
Sheet No: 1 of 1

*BALTIMORE AND OHIO RAILWAY BY D.B. 592, P. 1 AND D.B. 593, P. 3, NOW KNOWN AS CSX TRANSPORTATION, INC., SUCCESSOR BY MERGER, WHOSE MERGER DOCUMENTS WERE RECORDED IN O.R. 13276A16 AND O.R. 13276B15, AND RE-RECORDED IN O.R. 13283G13 ORIGINALLY CONVEYED TO THE COLUMBUS AND CINCINNATI MIDLAND RAILROAD CO. D.B. 325, P. 52

LINE TABLE		
LINE	BEARING	DISTANCE
L1	N34°05'14"E	13.41'
L2	S54°31'05"E	13.61'

- = I.P. FND.
- = I.P. SET

I.P. Set are 13/16" I.D. iron pipes 30" long with cap inscribed EMHT INC.

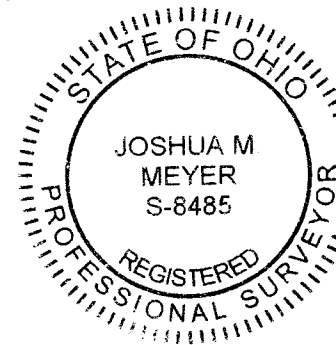


SURVEY NOTE:

This survey was prepared using documents of record, prior plats of survey, and observed evidence located by an actual field survey in May 2002, June 2010, October 2013, October 2014 and November 2016.

BASIS OF BEARINGS:

The bearings shown on this plat are based on the Ohio State Plane Coordinate System, South Zone, NAD83 (CORS96). Said bearings originated from a field traverse which was tied (referenced) to said coordinate system by GPS observations and observations of selected CORS base stations in the National Spatial Reference System. The portion of the southerly right-of-way line of Mill Street, having a bearing of South 55° 51' 52" East, is designated the "basis of bearing" for this survey.



By *Joshua M. Meyer*
 Joshua M. Meyer
 Professional Surveyor No. 8485
 jmeyer@emht.com

4-1-2021
 Date

