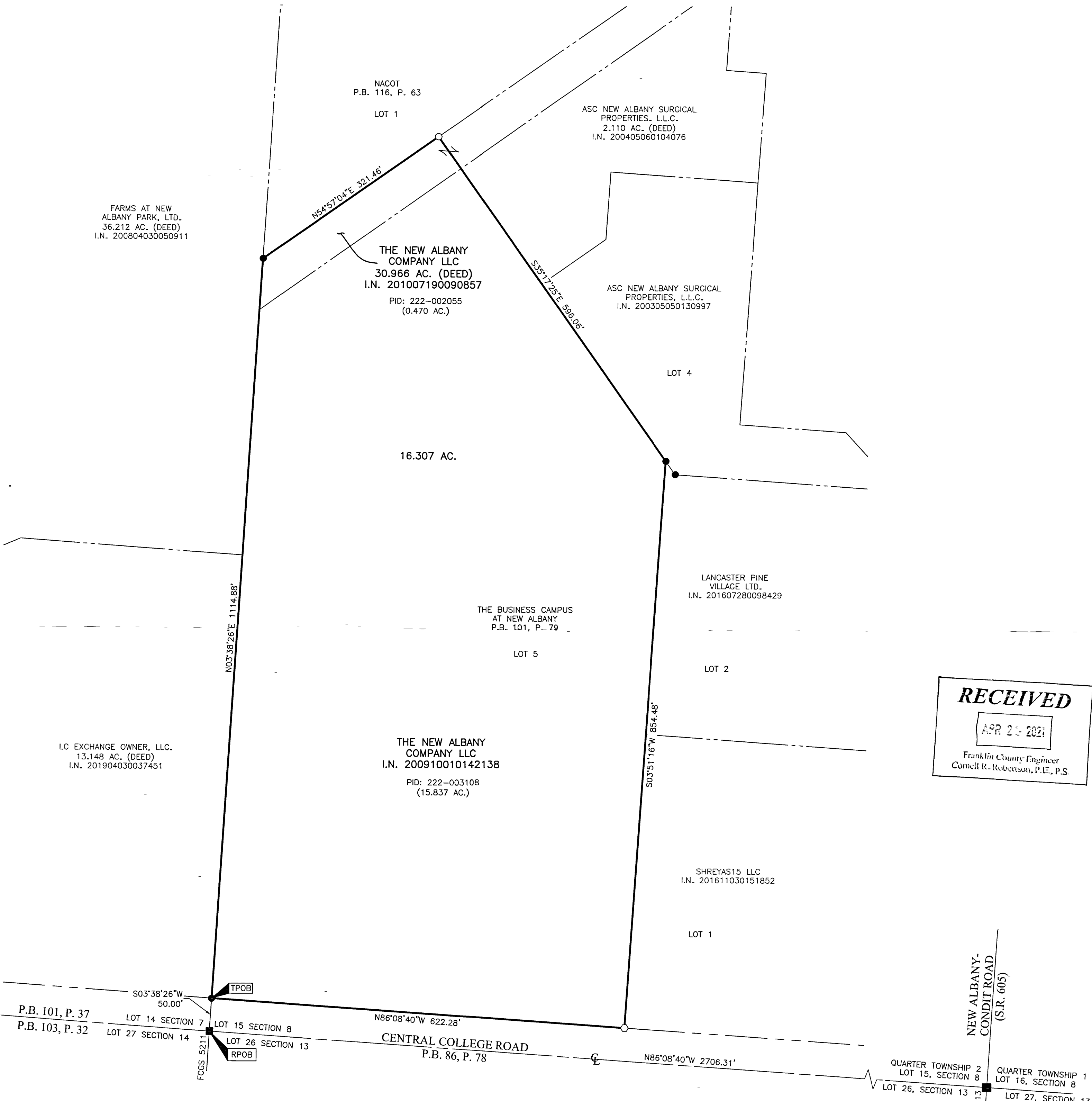


SURVEY OF ACREAGE PARCEL

LOT 15, SECTION 8, QUARTER TOWNSHIP 2, TOWNSHIP 2, RANGE 16

UNITED STATES MILITARY DISTRICT

CITY OF NEW ALBANY, COUNTY OF FRANKLIN, STATE OF OHIO

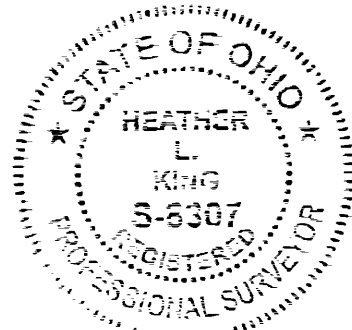
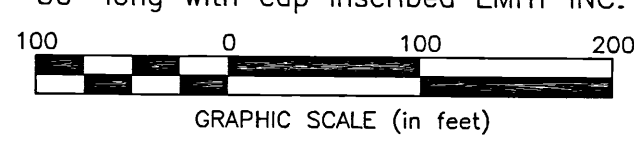


RECEIVED
 APR 25 2021
 Franklin County Engineer
 Cornell R. Robertson, P.E., P.S.

BASIS OF BEARINGS:
 The bearings shown hereon are based on the Ohio State Plane Coordinate System, South Zone, NAD83 (1986 Adjustment). Control for bearings was from coordinates of monuments FCGS 5574 and FCGS 5113, as established by the Franklin County Engineering Department using Global Positioning System procedures and equipment, having a bearing of South 86° 09' 36" East for a portion of the centerline of Central College Road.

SURVEY NOTE:
 This survey was prepared using documents of record, prior plats of survey, and observed evidence located by an actual field survey.

- = STONE FND.
 - = MON. FND.
 - = I.P. SET
 - = I.P. SET
 - = MAG. NAIL FND.
 - = MAG. NAIL SET
 - ▲ = R.R. SPK. FND.
 - ◆ = P.K. NAIL FND.
- I.P. Set are 13/16" I.D. iron pipes 30" long with cap inscribed EMHT INC.



By *Heather L. King* 4/19/21 Date
 Heather L. King
 Professional Surveyor No. 8307
 hking@emht.com

 Evans, Mechwart, Hambleton & Tilton, Inc. Engineers • Surveyors • Planners • Scientists 5500 New Albany Road, Columbus, OH 43054 Phone: 614.775.4500 Toll Free: 888.775.3648 emht.com	Date: October 9, 2020	
	Scale: 1" = 100'	
	Job No: 2020-0976	
	Sheet: 1 of 1	
REVISIONS		
MARK	DATE	DESCRIPTION

J:\20200976\DWG\4-SHEETS\BOUNDARY\20200976-VS-BNDY-01.DWG plotted by KING, HEATHER on 4/19/2021 2:23:30 PM last saved by KING on 4/19/2021 2:23:13 PM