

SURVEY OF ACREAGE PARCEL

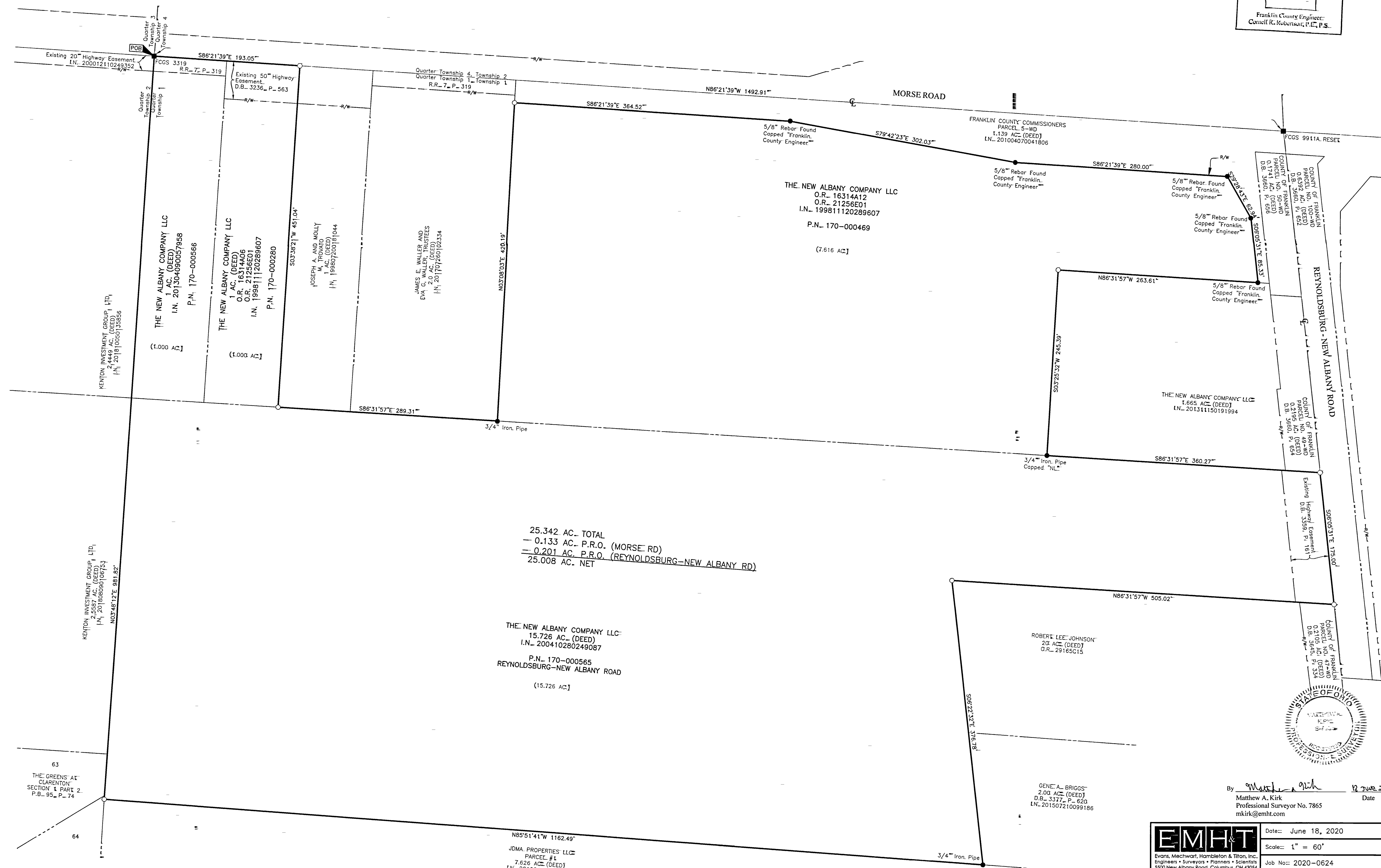
QUARTER TOWNSHIP 1, TOWNSHIP 1, RANGE 16

UNITED STATES MILITARY DISTRICT

TOWNSHIP OF JEFFERSON, COUNTY OF FRANKLIN, STATE OF OHIO

RECEIVED

Franklin County Engineer
Cornell R. Kobuszewski, P.E., P.S.

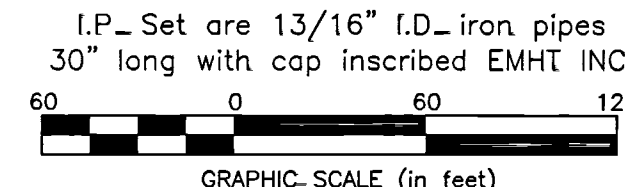


25.342 AC. TOTAL
 - 0.133 AC. P.R.O. (MORSE RD)
 - 0.201 AC. P.R.O. (REYNOLDSBURG-NEW ALBANY RD)
 25.008 AC. NET

THE NEW ALBANY COMPANY LLC
 15.726 AC. (DEED)
 I.N. 200410280249087
 P.N. 170-000565
 REYNOLDSBURG-NEW ALBANY ROAD
 (15.726 AC)

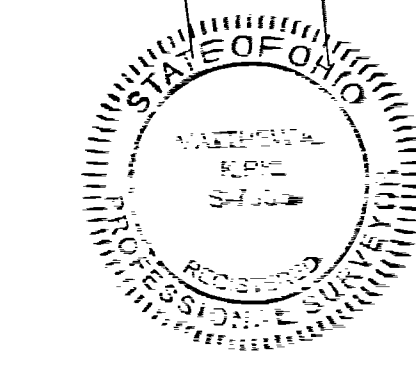
JOMA PROPERTIES LLC
 PARCEL #1
 7.626 AC. (DEED)
 I.N. 201904230046283

- = STONE_FND_
 - = MON_FND_
 - = I.P._FND_
 - = I.P._SET
 - = MAG_NAIL_FND_
 - = MAG_NAIL_SET
 - ▲ = R.R._SPK_FND_
 - ▲ = R.R._SPK_SET
 - = P.K._NAIL_FND_
- I.P. Set are 13/16" I.D. iron pipes
 30" long with cap inscribed EMHT INC.



SURVEY NOTE:
 This survey was prepared using documents of record, prior plats of survey, and observed evidence located by an actual field survey.

BASIS OF BEARINGS:
 The bearings shown hereon are based on the Ohio State Plane Coordinate System South Zone as per NAD83 (1986 Adjustment). Control for bearings was from coordinates of monuments A13RESET, FCGS6612, FCGS6640 and FCGS4425, established by the Franklin County Engineering Department, using Global Positioning System procedures and equipment.



By Matthew A. Kirk Date 18 June 20
 Matthew A. Kirk
 Professional Surveyor No. 7865
 mkirk@emht.com

EMHT		Date: June 18, 2020
Evans, Mechwart, Hambleton & Titon, Inc. Engineers • Surveyors • Planners • Scientists 3500 New Albany Road, Columbus, OH 43054 Phone: 614.778.4200 Toll Free: 888.773.3648		Scale: 1" = 60'
emht.com		Job No: 2020-0624
		Sheet: 1 of 1
REVISIONS		
MARK	DATE	DESCRIPTION