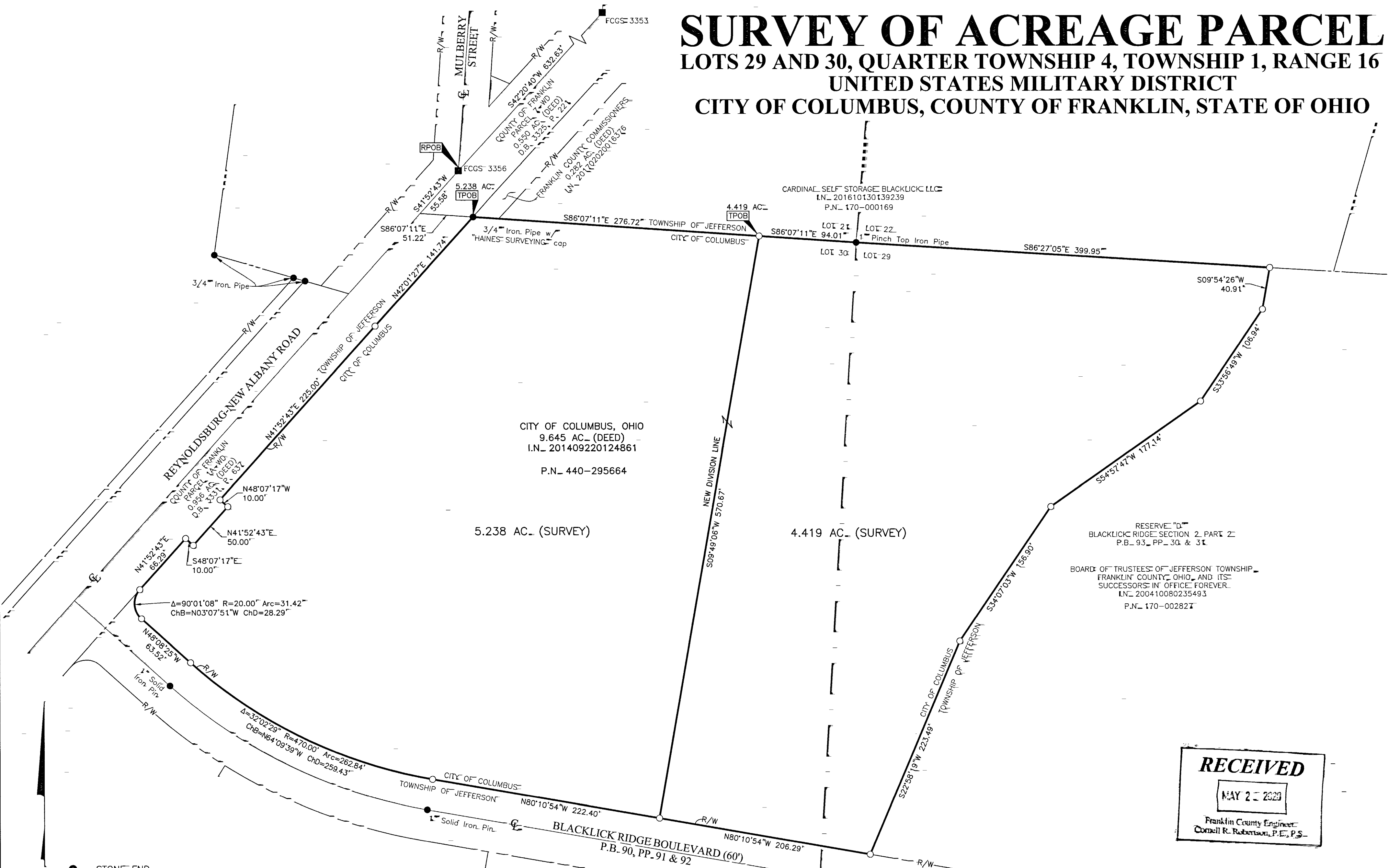


SURVEY OF ACREAGE PARCEL

LOTS 29 AND 30, QUARTER TOWNSHIP 4, TOWNSHIP 1, RANGE 16

UNITED STATES MILITARY DISTRICT

CITY OF COLUMBUS, COUNTY OF FRANKLIN, STATE OF OHIO



CITY OF COLUMBUS, OHIO
9.645 AC (DEED)
I.N. 201409220124861
P.N. 440-295664

5.238 AC (SURVEY)

4.419 AC (SURVEY)

RESERVE "D"
BLACKLICK RIDGE SECTION 2, PART 2
P.B. 93, PP. 30 & 31
BOARD OF TRUSTEES OF JEFFERSON TOWNSHIP,
FRANKLIN COUNTY, OHIO, AND ITS
SUCCESSORS IN OFFICE FOREVER.
I.N. 200410080235493
P.N. 170-002827

RECEIVED

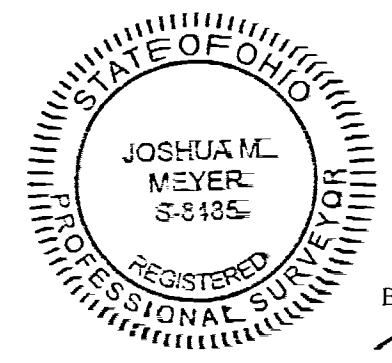
MAY 22 2020

Franklin County Engineer
Cornell R. Rubenow, P.E., P.S.

- = STONE END
 - = MON. END
 - = I.P. END
 - = I.P. SET
 - = MAG. NAIL END
 - = MAG. NAIL SET
 - ▲ = R.R. SPK. END
 - = P.K. NAIL END
- I.P. Set are 13/16" I.D. iron pipes
30" long with cap inscribed EMHT INC.

BASIS OF BEARINGS
The bearings shown on this survey are based on the Ohio State Plane Coordinate System, South Zone, NAD83 (1986 adj.). Said bearings originated from a field traverse which was referenced to said coordinate system by GPS observations and observations of selected Franklin County monuments: A-13 RESET, FCGS 6612, FCGS 6640, and FCGS 4425. The portion of the centerline of Blacklick Ridge Boulevard (P.B. 90, PP. 91 & 92), having a bearing of South 80° 10' 54" East, is designated the "basis of bearing" for this survey.

SURVEY NOTE
This survey was prepared using documents of record, prior plats of survey, and observed evidence located by an actual field survey performed under the direct supervision of Joshua M. Meyer, Professional Surveyor Number 8485, in August 2012 and April 2020.



By Joshua M. Meyer Date 5-22-2020
Professional Surveyor No. 8485

EMHT		Date: May 22, 2020
Evans, Mechwart, Hambleton & Tilton, Inc. Engineers • Surveyors • Planners • Scientists 5500 New Albany Road, Columbus, OH 43054 Phone: 614.775.4500 Toll Free: 888.775.3648 emht.com		Scale: 1" = 60'
		Job No: 2012-0150
		Sheet: 1 of 1
REVISIONS		
MARK	DATE	DESCRIPTION

