

SURVEY OF ACREAGE PARCEL

QUARTER TOWNSHIP 4, TOWNSHIP 1, RANGE 17

UNITED STATES MILITARY LANDS

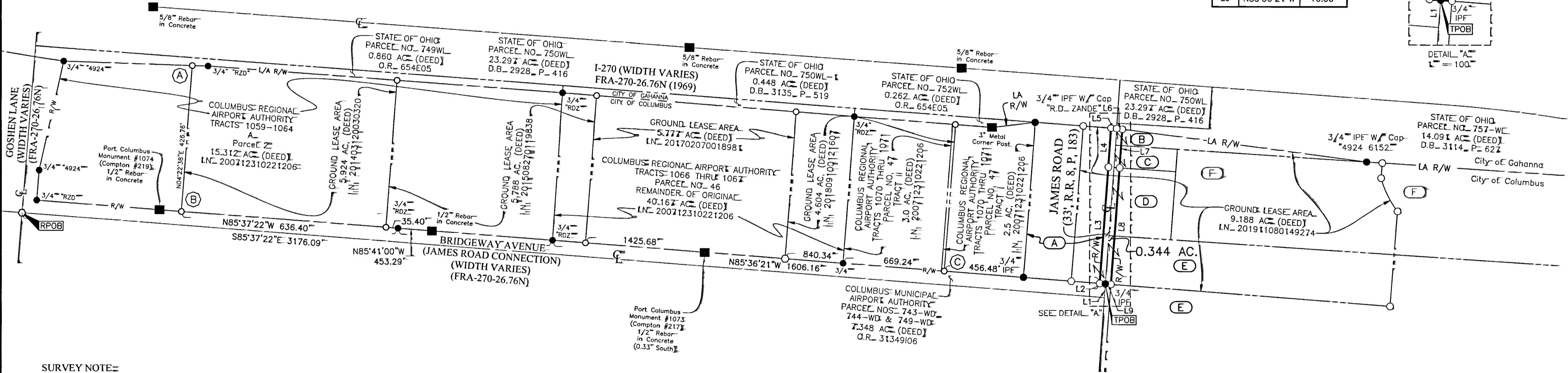
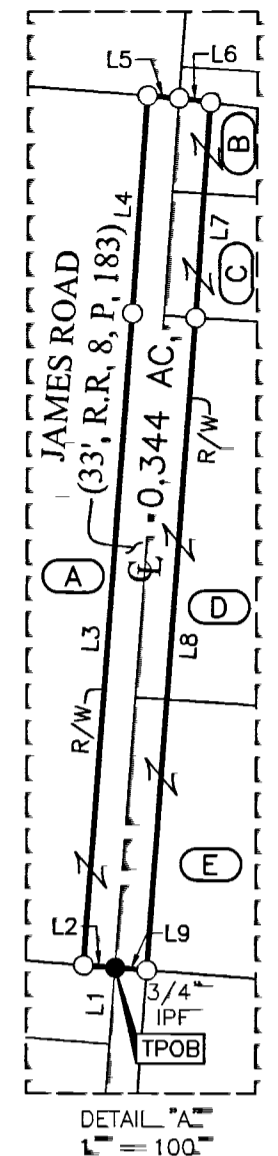
CITY OF COLUMBUS, COUNTY OF FRANKLIN, STATE OF OHIO

RECEIVED

MAR 17 2020

Franklin County Engineer
Curtis E. Robertson, P.E., P.S.

LINE TABLE		
LINE	BEARING	DISTANCE
L1	N04°11'00"E	40.00'
L2	N85°36'21"W	16.50'
L3	N04°11'00"E	340.12'
L4	N03°52'17"E	113.60'
L5	S85°39'35"E	16.50'
L6	S82°29'58"E	16.53'
L7	S03°52'17"W	112.51'
L8	S04°11'00"W	340.34'
L9	N85°36'21"W	16.50'



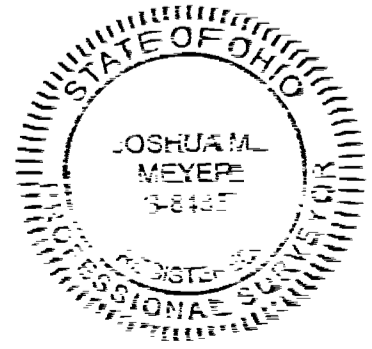
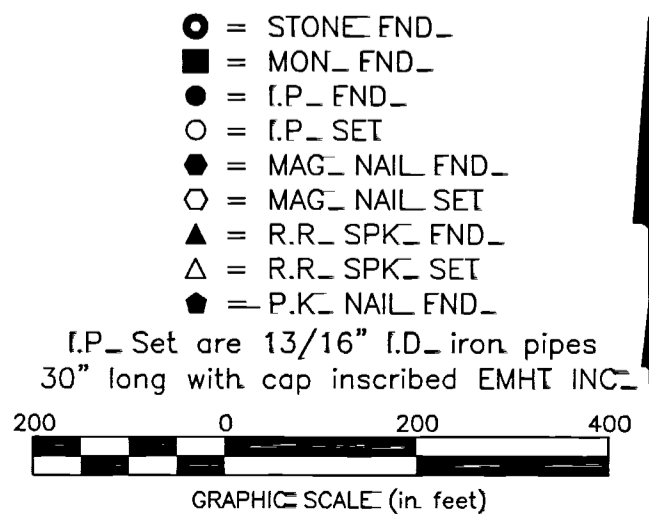
SURVEY NOTE=
This survey was prepared using documents of record, prior plats of survey, and observed evidence located by an actual field survey in November of 2013 and January 2019.

BASIS OF BEARINGS=
The bearings shown on this plat are based on the Ohio State Plane Coordinate System, South Zone, NAD83 (1986). Said bearings originated from a field traverse which was tied (referenced) to said coordinate system by GPS observations and observations of selected Franklin County monuments FRANK 65 and FRANK 165. The portion of the centerline of Bridgeway Avenue, having a bearing of N 85° 37' 22" W as shown hereon, is designated the "basis of bearing" for this survey.

(A)	(B)	(C)	(D)	(E)	(F)
COLUMBUS REGIONAL AIRPORT AUTHORITY TRACTS 1074 THRU 1075 PARCEL NO. 48 2.5 AC. (DEED) I.N. 200712310221206 P.N. 520-164563 (0.172 AC.)	COLUMBUS MUNICIPAL AIRPORT AUTHORITY 0.409 AC. (DEED) O.R. 21103F05 P.N. 520-263243 (0.018 AC.)	COLUMBUS REGIONAL AIRPORT AUTHORITY TRACT 1078 0.27 AC. (DEED) I.N. 200712310221206 P.N. 520-263245 (0.026 AC.)	COLUMBUS REGIONAL AIRPORT AUTHORITY TRACT 1083 0.82 AC. (DEED) I.N. 200712310221206 P.N. 520-263244 (0.075 AC.)	COLUMBUS REGIONAL AIRPORT AUTHORITY TRACTS 1062-1064 PARCEL NO. 52 I.N. 200712310221206 P.N. 520-164555 (0.053 AC.)	COLUMBUS REGIONAL AIRPORT AUTHORITY 7.957 AC. (DEED) I.N. 200812110178154 P.N. 520-287806

STATE PLANE COORDINATES (GROUND)*	PCIA LOCAL COORDINATES
(A) N 731609.8090 E 1858425.5775	(A) N 8846.9879 E 6427.5179
(B) N 731184.2917 E 1858393.0069	(B) N 8420.2262 E 6428.0869
(C) N 731013.5204 E 1860625.8618	(C) N 8423.3509 E 8667.4605
FRANK 65 N 731729.451 E 1858861.411	FRANK 65 N 9000.0857 E 6852.7277
COC 40-82 N 730850.320 E 1852899.693	COC 40-82 N 7660.7152 E 977.3132

*The coordinates shown on this map are based on the Ohio State Plane Coordinate System, South Zone, NAD 83 (1986). Said coordinates originated from a field traverse which was tied (referenced) to said coordinate system by GPS observations of Franklin County Engineering Department monuments FRANK65, and FRANK165. The grid to ground scale factor (1.0000384293) was applied at the location of N 731750.468, E 1857130.533.



By *J.M.M.*
Joshua M. Meyer
Professional Surveyor No. 8485

3-16-2020
Date

<p style="font-size: small;">Evans, Mechwart, Hambleton & Tilton, Inc. Engineers • Surveyors • Planners • Scientists 5500 New Albany Road, Columbus, OH 43054 Phone: 614.775.4500 Toll Free: 888.775.3648 emht.com</p>	Date=	March 10, 2020
	Scale=	1" = 200'
	Job No=	2018-1369
	Sheet=	1 of 1
REVISIONS		
MARK	DATE	DESCRIPTION