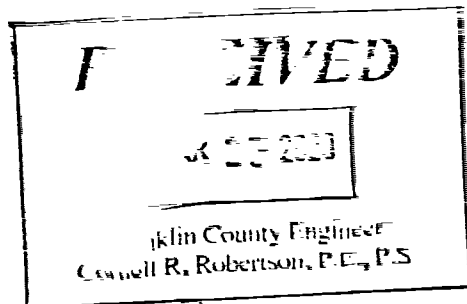


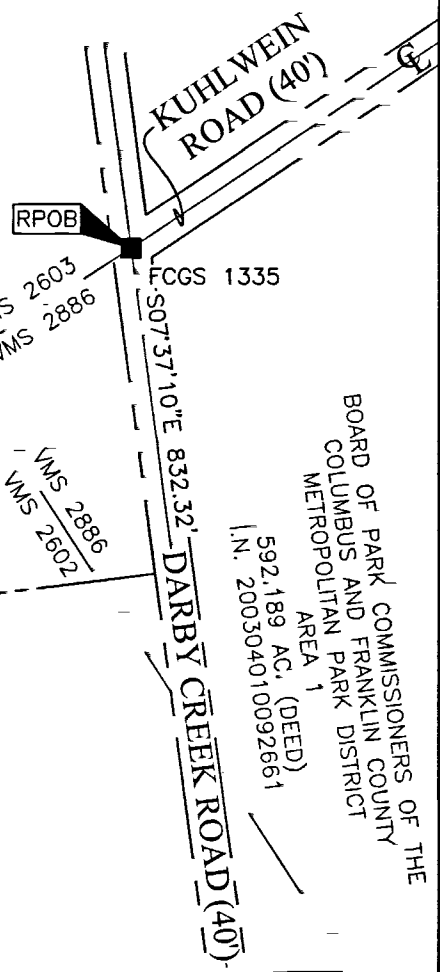
SURVEY OF ACREAGE PARCEL

VIRGINIA MILITARY DISTRICT SURVEY NUMBERS 2602 & 2603

PRAIRIE TOWNSHIP & PLEASANT TOWNSHIP, COUNTY OF FRANKLIN, STATE OF OHIO



J:\20200156\UNGS\CASHIERS\BOUNDARY_20200156-VS-BNDY-02.DWG plotted by SCHROEDER on 3/20/2020 2:08:45 PM last saved by SCHROEDER on 3/20/2020 2:08:32 PM



LIZANNE GALBREATH MEGRUE, TRUSTEE
 REMAINDER OF 151.25 AC. (DEED)
 I.N. 200303060067687
 I.N. 200303060067688
 I.N. 200303060067689
 I.N. 200303060067690
 I.N. 200303060067691
 I.N. 200303060067692
 P.N. 240-000007

LIZANNE GALBREATH MEGRUE, TRUSTEE
 1 AC. (DEED)
 I.N. 200303060067729
 I.N. 200303060067730
 I.N. 200303060067731
 I.N. 200303060067732
 I.N. 200303060067733
 I.N. 200303060067734
 P.N. 240-003098

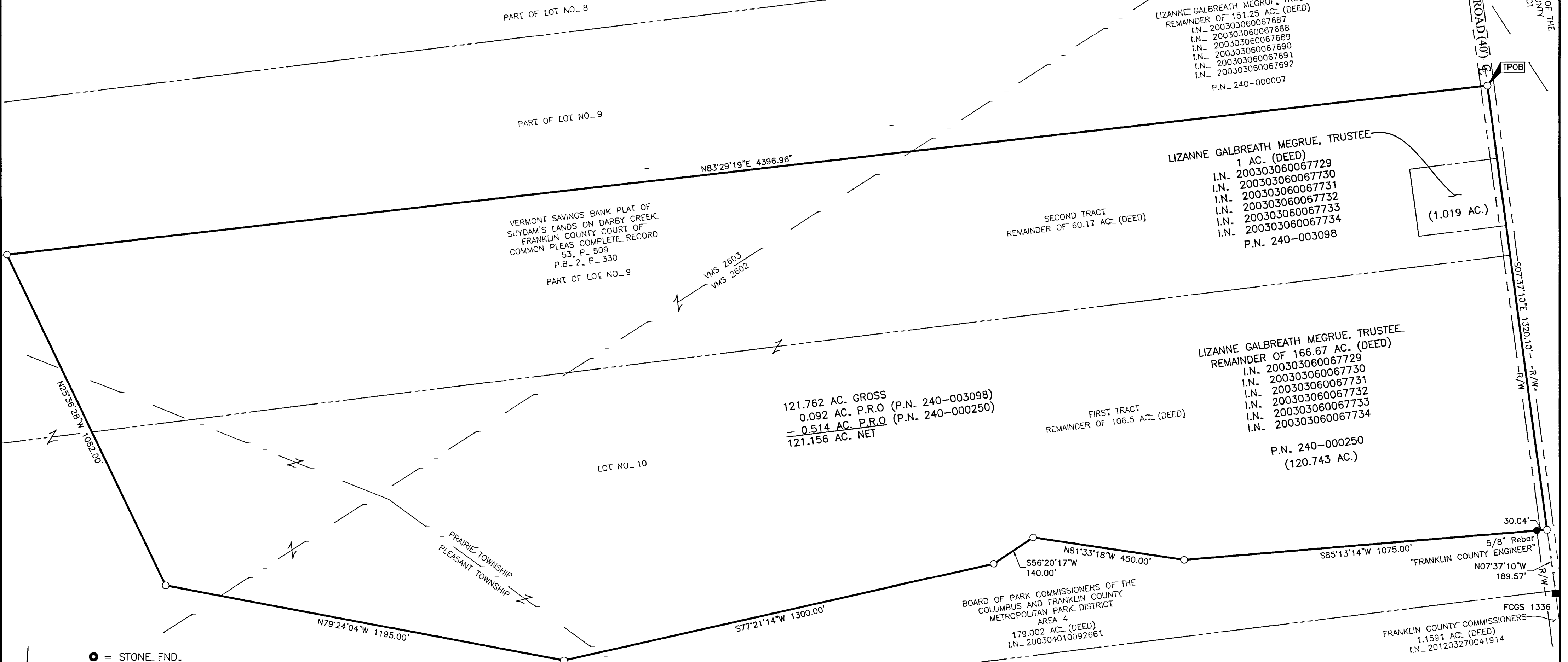
LIZANNE GALBREATH MEGRUE, TRUSTEE
 REMAINDER OF 166.67 AC. (DEED)
 I.N. 200303060067729
 I.N. 200303060067730
 I.N. 200303060067731
 I.N. 200303060067732
 I.N. 200303060067733
 I.N. 200303060067734
 P.N. 240-000250
 (120.743 AC.)

SECOND TRACT
 REMAINDER OF 60.17 AC. (DEED)

FIRST TRACT
 REMAINDER OF 106.5 AC. (DEED)

121.762 AC. GROSS
 0.092 AC. P.R.O. (P.N. 240-003098)
 = 0.514 AC. P.R.O. (P.N. 240-000250)
 121.156 AC. NET

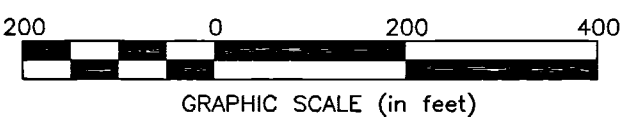
VERMONT SAVINGS BANK PLAT OF
 SUYDAM'S LANDS ON DARBY CREEK
 FRANKLIN COUNTY COURT OF
 COMMON PLEAS COMPLETE RECORD
 53, P. 509
 P.B. 2, P. 330
 PART OF LOT NO. 9



BOARD OF PARK COMMISSIONERS OF THE
 COLUMBUS AND FRANKLIN COUNTY
 METROPOLITAN PARK DISTRICT
 AREA 4
 179.002 AC. (DEED)
 I.N. 200304010092661

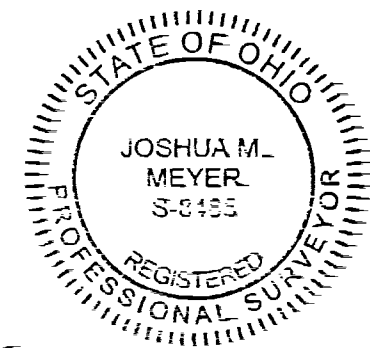
FRANKLIN COUNTY COMMISSIONERS
 1.1591 AC. (DEED)
 I.N. 201203270041914

- = STONE FND.
 - = MON. FND.
 - = I.P. FND.
 - = I.P. SET
 - = MAG. NAIL FND.
 - = MAG. NAIL SET
 - ▲ = R.R. SPK. FND.
 - ◆ = P.K. NAIL FND.
- I.P. Set are 13/16" I.D. iron pipes
 30" long with cap inscribed EMHT INC.



SURVEY NOTE:
 This survey was prepared using documents of record, prior plats of survey, and observed evidence located by an actual field survey performed by EMHT on January 13, 2003 and February 25, 2020.

BASIS OF BEARINGS:
 The Bearings shown hereon are based on the portion of the centerline of Darby Creek Road between Franklin County Monuments FCGS1337 and FCGS5460, having a bearing of North 07° 37' 10" West, as shown in the deed of record in Instrument Number 200304010092661 on file with the Recorder's Office, Franklin County Ohio.



By *JM Meyer* Date 3-20-2020
 Joshua M. Meyer
 Professional Surveyor No. 8485

EMHT		Date: March 20, 2020
Evans, Mechwart, Hambleton & Tilton, Inc. Engineers • Surveyors • Planners • Scientists 5500 New Albany Road, Columbus, OH 43054 Phone: 614.775.4500 Toll Free: 888.775.3648 emht.com		Scale: 1" = 200'
		Job No: 2020-0156
		Sheet: 1 of 1
REVISIONS		
MARK	DATE	DESCRIPTION