

SURVEY OF ACREAGE PARCELS

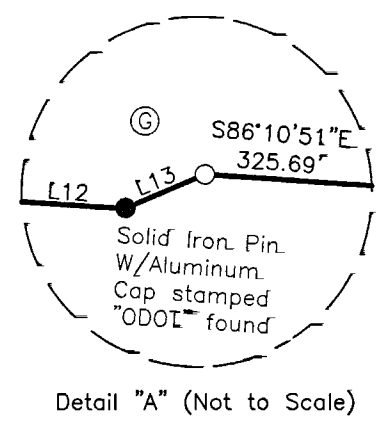
QUARTER TOWNSHIP 1, TOWNSHIP 1, RANGE 17

UNITED STATES MILITARY DISTRICT

CITY OF COLUMBUS, COUNTY OF FRANKLIN, STATE OF OHIO

- Ⓐ STATE OF OHIO PARCEL 2WL (FRA-270-31.41) 0.111 AC. (DEED) O.R. 32782E13
- Ⓑ DISTRIBUTION LAND CORP. 2.290 AC. (DEED) O.R. 33206B05
- Ⓒ DISTRIBUTION LAND CORP. 0.288 AC. (DEED) O.R. 33206B05
- Ⓓ DISTRIBUTION LAND CORP. PARCEL TWO 0.684 AC. (DEED) O.R. 28688E19
- Ⓔ CITY OF COLUMBUS PARCEL 2WV (FRA-270-31.41) 0.111 AC. (DEED) O.R. 32782E13
- Ⓕ DISTRIBUTION LAND CORP. PARCEL THREE 0.694 AC. (DEED) O.R. 28688E19
- Ⓖ CITY OF COLUMBUS PARCEL 2WV-1 (FRA-270-31.41) 0.047 AC. (DEED) O.R. 32782E15
- Ⓗ CITY OF COLUMBUS OHIO PARCEL NO. 7-WD 0.548 AC. (DEED) L.N. 201910280142985
- Ⓘ CITY OF COLUMBUS OHIO 2.113 AC. (DEED) O.B. 3628 P. 251
- Ⓚ CITY OF COLUMBUS OHIO 5.12 AC. (DEED) O.R. 12330C13
- Ⓛ CITY OF COLUMBUS 0.412 AC. (DEED) O.B. 3074, P. 628
- Ⓜ CITY OF COLUMBUS 1.029 AC. (DEED) O.B. 3077, P. 495

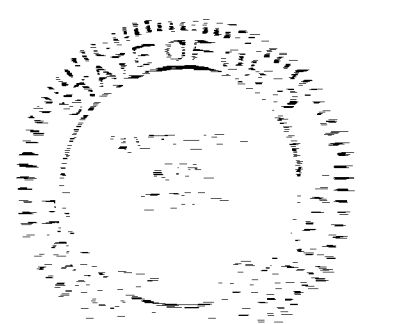
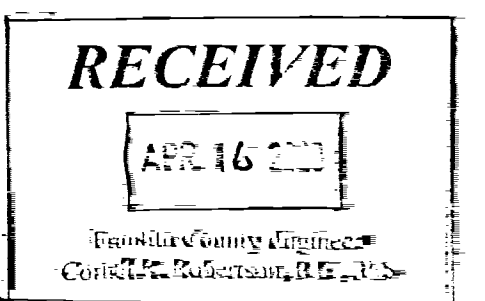
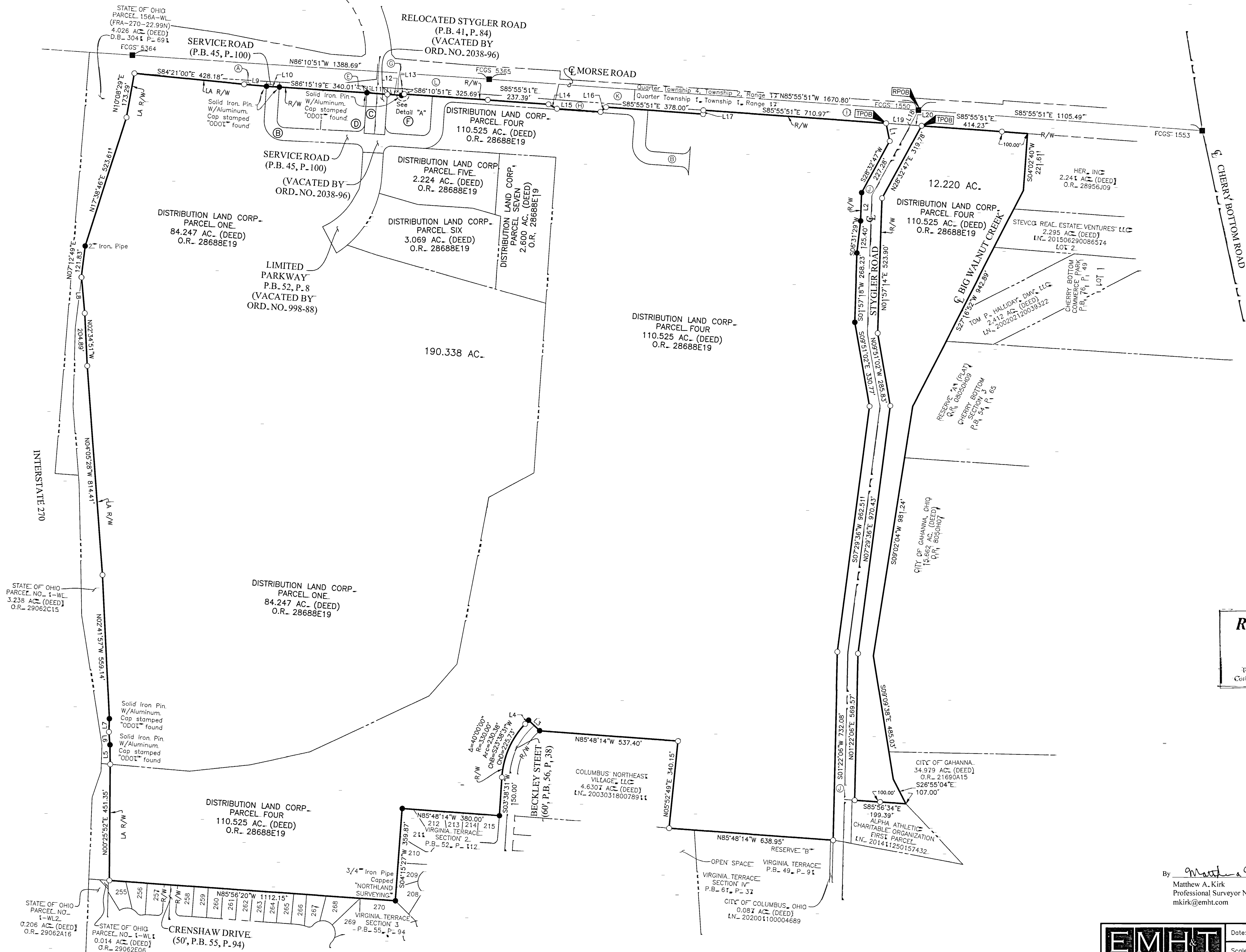
LINE	BEARING	DISTANCE
L1	S11°26'01"E	70.83'
L2	S01°57'14"W	109.99'
L3	N46°21'29"W	60.00'
L4	S43°38'31"W	19.78'
L5	N00°46'33"W	74.51'
L6	N04°26'28"W	50.92'
L7	N02°04'43"E	50.92'
L8	N04°53'25"W	139.76'
L9	S85°05'21"E	87.05'
L10	S86°14'09"E	50.00'
L11	S85°37'46"E	80.00'
L12	S86°16'00"E	54.86'
L13	N66°49'01"E	12.02'
L14	S62°07'30"E	37.16'
L15	S85°55'51"E	169.00'
L16	N49°04'09"E	28.28'
L17	N04°04'09"E	15.00'
L18	S28°32'47"W	65.92'
L19	N85°55'51"W	93.97'
L20	S85°55'51"E	43.93'



- = STONE FND.
 - = MON. FND.
 - = 3/4 I.P. FND.
 - = I.P. SET
 - = MAG. NAIL FND.
 - = MAG. NAIL SET
 - ▲ = R.R. SPK. FND.
 - = P.K. NAIL FND.
- I.P. Set are 13/16" I.D. iron pipes 30" long with cap inscribed EMHT INC.
- GRAPHIC SCALE (in feet)

SURVEY NOTE-
This survey was prepared using documents of record, prior plats of survey, and observed evidence located by an actual field survey.

BASIS OF BEARINGS-
The bearings shown herein are based on the Ohio State Plane Coordinate System, South Zone, NAD83 (NSRS2007). Said bearings originated from a field traverse which was tied (referenced) to said coordinate system by GPS observations and observations of selected Franklin County Engineering Department monuments 1550, 1553, 5364 and 5365. The portion of the centerline of Morse Road, having a bearing of South 86° 10' 51" East, and monumented as shown herein, is designated the "basis of bearing" for this survey.



By Matthew A. Kirk 14 April 20
Matthew A. Kirk
Professional Surveyor No. 7865
mkirk@emht.com

EMHT Evans, Mechwart, Hombilton & Tilton, Inc. Engineers • Surveyors • Planners • Scientists 550 New Albany Road, Columbus, OH 43054 Phone: 614.775.4500 Fax: 614.775.3648 emht.com		Date: April 14, 2020
Scale: 1" = 200'		Job No: 2020-0221
Sheet: 1 of 1		REVISIONS
MARK	DATE	DESCRIPTION