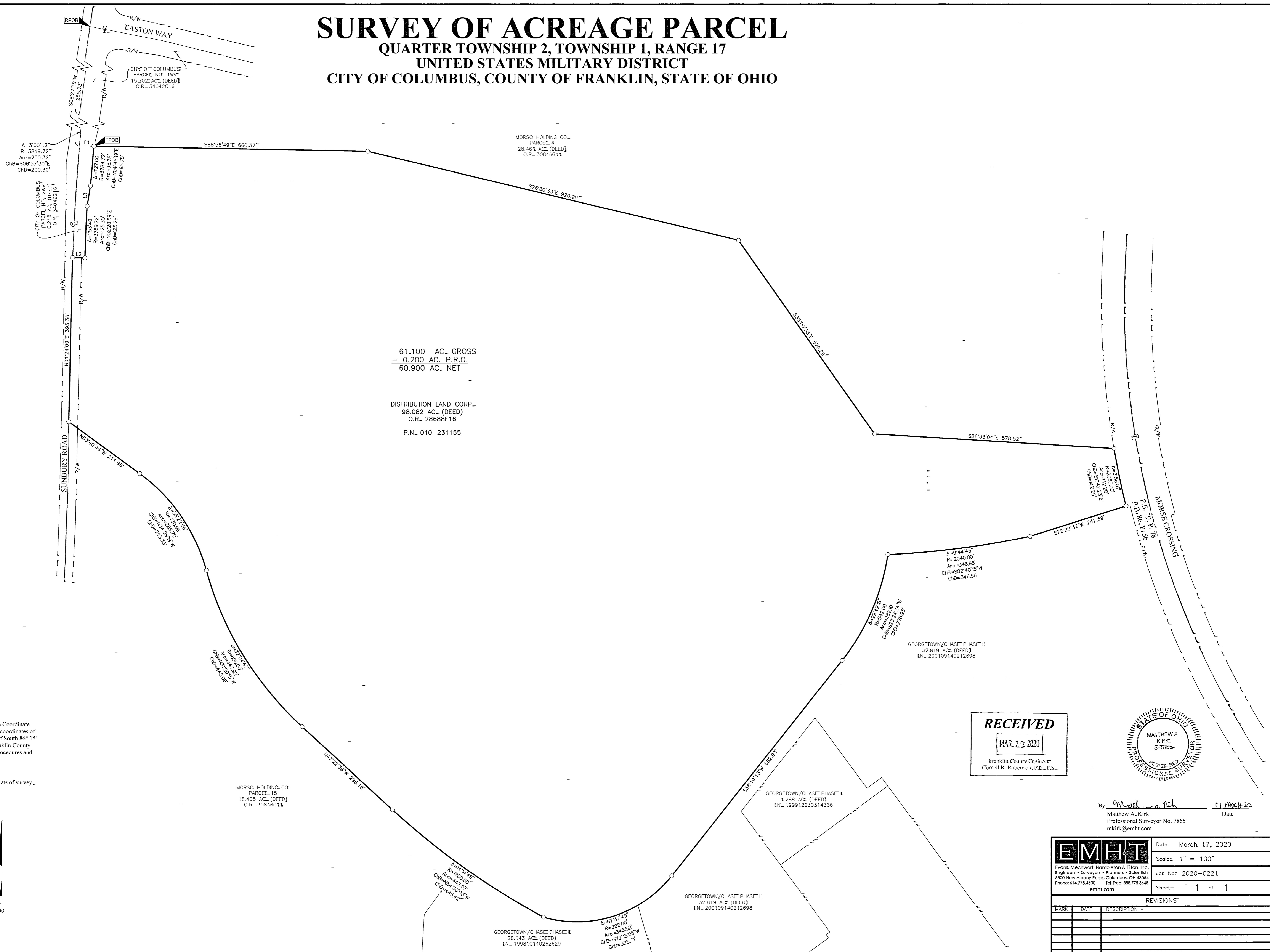


# SURVEY OF ACREAGE PARCEL

## QUARTER TOWNSHIP 2, TOWNSHIP 1, RANGE 17

### UNITED STATES MILITARY DISTRICT

### CITY OF COLUMBUS, COUNTY OF FRANKLIN, STATE OF OHIO



- LINE TABLE -

LINE	BEARING	DISTANCE
L1	S88°56'49"E	35.10'
L2	S88°35'51"E	30.00'
L3	N09°25'52"E	49.83'

61.100 AC. GROSS  
 = 0.200 AC. P.R.O.  
 60.900 AC. NET

DISTRIBUTION LAND CORP.  
 98.082 AC. (DEED)  
 O.R. 28688F16  
 P.N. 010-231155

**BASIS OF BEARINGS=**  
 The bearings shown hereon are based on the Ohio State Plane Coordinate System, South Zone, NAD83. Control for bearings was from coordinates of monuments FRANK 64 and FRANK 164, having a bearing of South 86° 15' 51" East, between said monuments, as established by the Franklin County Engineering Department, using Global Positioning System procedures and equipment.

**SURVEY NOTE=**  
 This survey was prepared using documents of record, prior plats of survey, and observed evidence located by an actual field survey.

- = STONE FND.
- = MON. FND.
- = I.P. FND.
- = I.P. SET
- = MAG. NAIL FND.
- = MAG. NAIL SET
- ▲ = R.R. SPK. FND.
- = P.K. NAIL FND.

I.P. Set are 13/16" I.D. iron pipes 30" long with cap inscribed EMHT INC.

GRAPHIC SCALE (in feet)

**RECEIVED**  
 MAR 23 2021  
 Franklin County Engineer  
 Cornell R. Robertson, P.E., P.S.



By Matthew A. Kirk 17 March 20  
 Matthew A. Kirk Date  
 Professional Surveyor No. 7865  
 mkirk@emht.com

<b>EMHT</b>		Date: March 17, 2020
Evans, Mechwart, Hambleton & Tilton, Inc. Engineers • Surveyors • Planners • Scientists 5500 New Albany Road, Columbus, OH 43054 Phone: 614.775.4500 Fax: 614.775.3448		Scale: 1" = 100'
emht.com		Job No: 2020-0221
		Sheet: 1 of 1
REVISIONS		
MARK	DATE	DESCRIPTION