



Evans, Mechwart, Hambleton & Tilton, Inc.
 Engineers - Surveyors - Planners - Scientists
 5500 New Albany Road, Columbus, OH 43054
 Phone: 614.775.4500 Toll Free: 888.775.3648
 emht.com

SURVEY OF ACREAGE PARCEL

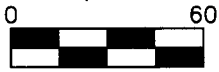
VIRGINIA MILITARY DISTRICT SURVEY NUMBER 1388

CITY OF GROVE CITY, COUNTY OF FRANKLIN, STATE OF OHIO

Date: June 4, 2021 Scale: 1" = 60' Job No: 2020-1288 Sheet No: 1 of 1

- = MON. FND.
- = I.P. FND.
- = I.P. SET
- = MAG. NAIL FND.
- = MAG. NAIL SET
- ▲ = R.R. SPK. FND.

I.P. Set are 13/16" I.D. iron pipes
 30" long with cap inscribed EMHT INC.



SCALE (in feet)

CURVE TABLE					
CURVE	DELTA	RADIUS	ARC	CH. BEARING	CH. DIST.
C1	25°50'31"	30.00'	13.53'	S09°44'50"E	13.42'

LINE TABLE		
LINE	BEARING	DISTANCE
L1	N87°28'46"W	33.00'
L2	S03°10'25"W	18.14'
L3	S87°19'35"E	30.00'

LOT 4
 PLAT OF SURVEY
 OF VMS 1388
 P.B. 17, P. 154
 TITILAYO GBENRO
 1.815 AC. (DEED)
 I.N. 200504050062867
 P.N. 040-013656
 0.149 AC. GROSS
 = 0.111 AC. P.R.O.
 0.038 AC. NET

RECEIVED

JUN 10 2021

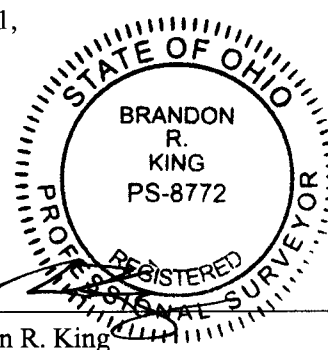
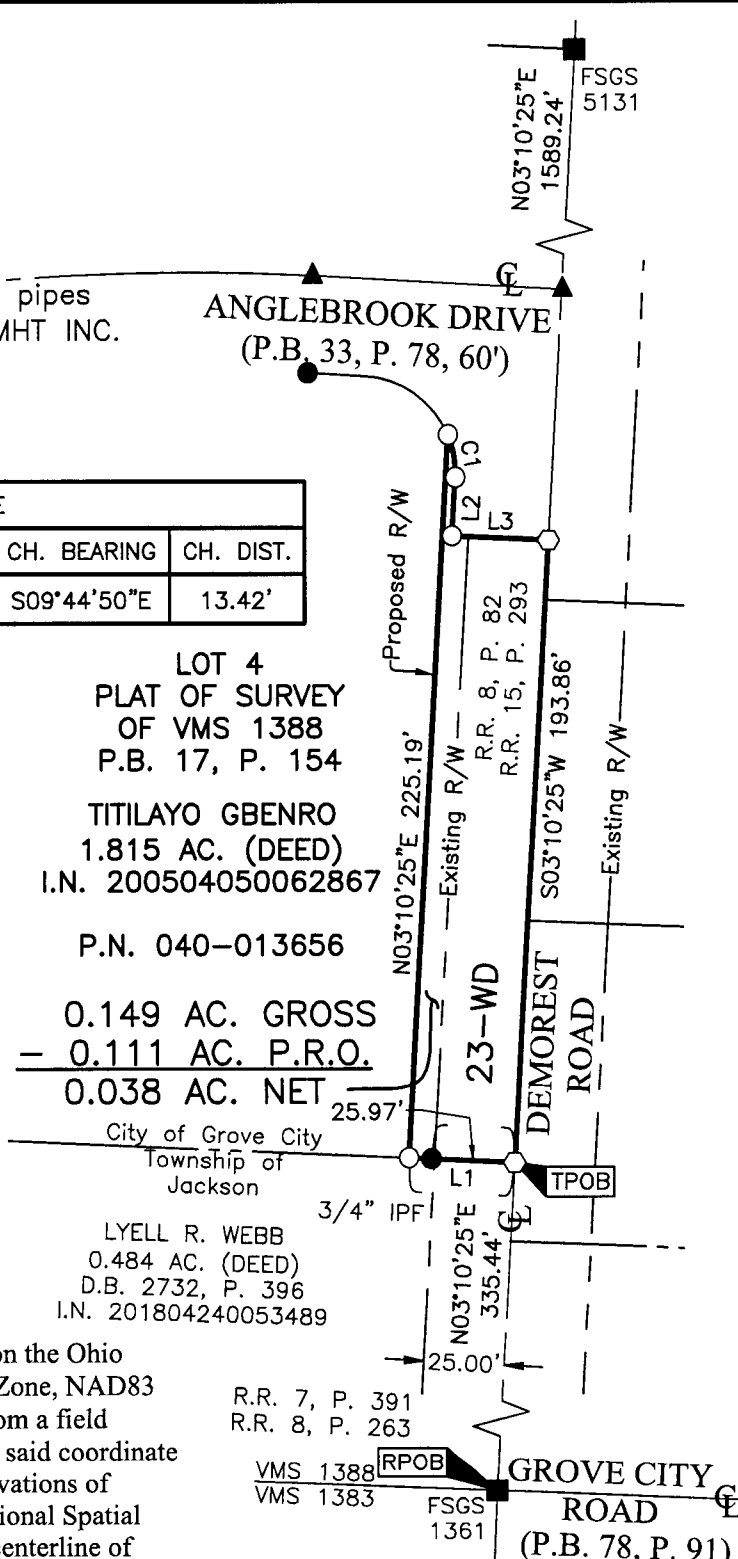
Franklin County Engineer
 Cornell R. Robertson, P.E., P.S.

BASIS OF BEARINGS:

The bearings shown hereon are based on the Ohio State Plane Coordinate System, South Zone, NAD83 (CORS96). Said bearings originated from a field traverse which was tied (referenced) to said coordinate system by GPS observations and observations of selected CORS base stations in the National Spatial Reference System. The portion of the centerline of Demorest Road, between FCGS 1361 and FCGS 5131, having a bearing of North 03°10' 25" East, is designated as the "basis of bearings" for this survey.

SURVEY NOTE:

This survey was prepared using documents of record, prior plats of survey, and observed evidence located by an actual field survey in October 2019, March 2021 and April 2021.



By Brandon R. King Date 6-4-2021
 Professional Surveyor No. 8772
 bking@emht.com

j:\20201288\DWG\04SHEETS\BOUNDARY\20201288-VS-BNDY-23WD.DWG plotted by KING, BRANDON on 6/2/2021 9:09:40 AM last saved by BKING on 5/17/2021 3:59:36 PM