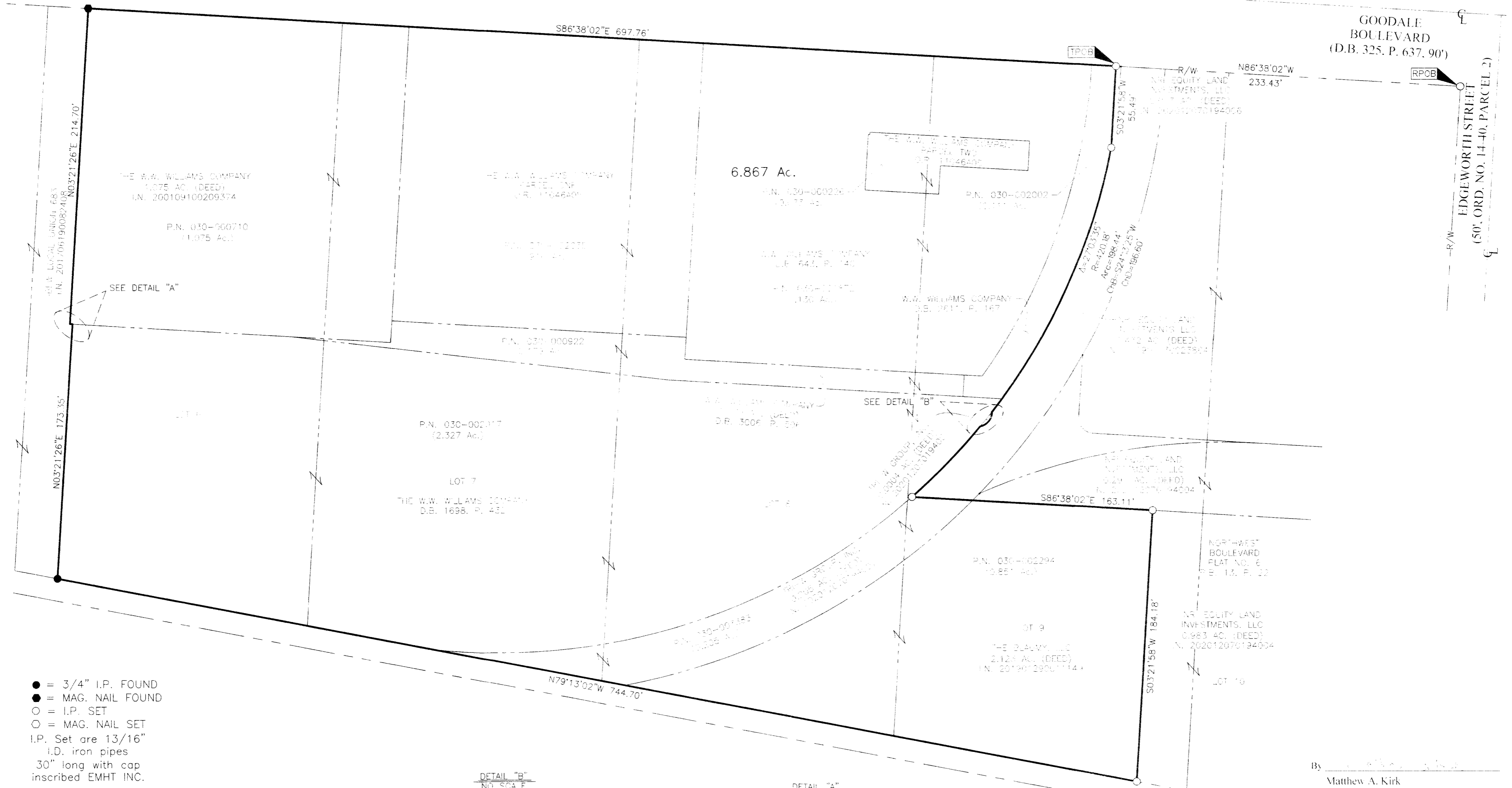


# SURVEY OF ACREAGE PARCEL

## SECTION 7, TOWNSHIP 5, RANGE 22

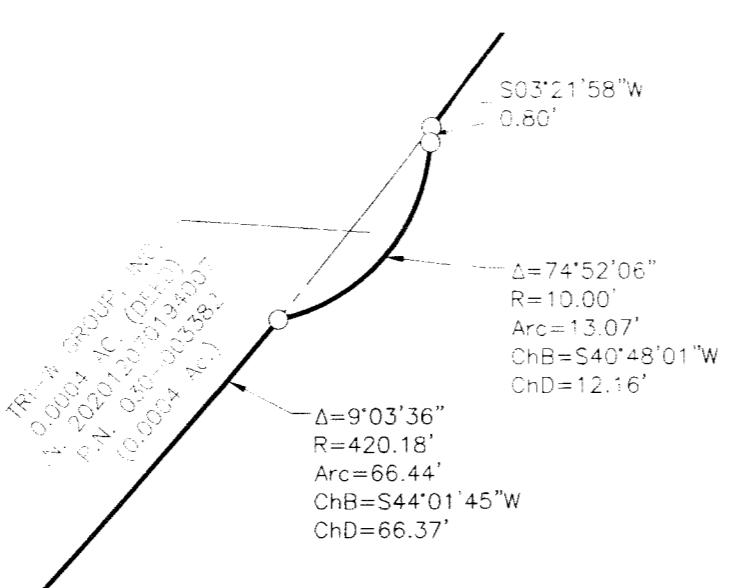
### REFUGEE LANDS

#### CITY OF GRANDVIEW HEIGHTS, COUNTY OF FRANKLIN, STATE OF OHIO

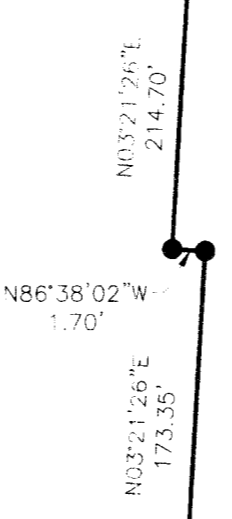


- = 3/4" I.P. FOUND
- = MAG. NAIL FOUND
- = I.P. SET
- = MAG. NAIL SET
- I.P. Set are 13/16" I.D. iron pipes 30" long with cap inscribed EMHT INC.

DETAIL "B"  
NO SCALE



DETAIL "A"  
NO SCALE



**BASIS OF BEARINGS:**  
The bearings shown hereon are based on the Ohio State Plane Coordinate System, South Zone, as per NAD83 (1986). Control for the bearings was from coordinates of monuments 5-83 and 4-83, having a bearing of North 00° 22' 10" West for a portion of the west limited access right-of-way line of Olentangy River Road, established by the Franklin County Engineering Department using Global Positioning System procedures and equipment.

**SURVEY NOTE:**  
This survey was prepared using documents of record, prior plats of survey, and observed evidence located by an actual field survey.

By Matthew A. Kirk Date \_\_\_\_\_  
Professional Surveyor No. 7865  
mkirk@emht.com



## EMHT

Evans, Mechwart, Hambleton & Tilton, Inc.  
Engineers • Surveyors • Planners • Scientists  
5500 New Albany Road, Columbus, OH 43054  
Phone: 614.775.4500 Toll Free: 888.775.3648  
emht.com

Date: April 19, 2021
Scale: 1" = 50'
Job No: 2020-1183
Sheet: 1 of 1

REVISIONS		
MARK	DATE	DESCRIPTION

A:\2020\BAYLOND\BAYLOND\BOUNDARY\20201183-VS-BNDY-13.DWG plotted by MKRK on 4/19/2021 1:45:22 PM last saved by MKRK on 4/19/2021 1:44:05 PM