



DLZ OHIO, INC.
 6121 HUNTLEY ROAD COLUMBUS, OH 43229
 PHONE (614) 888-0040

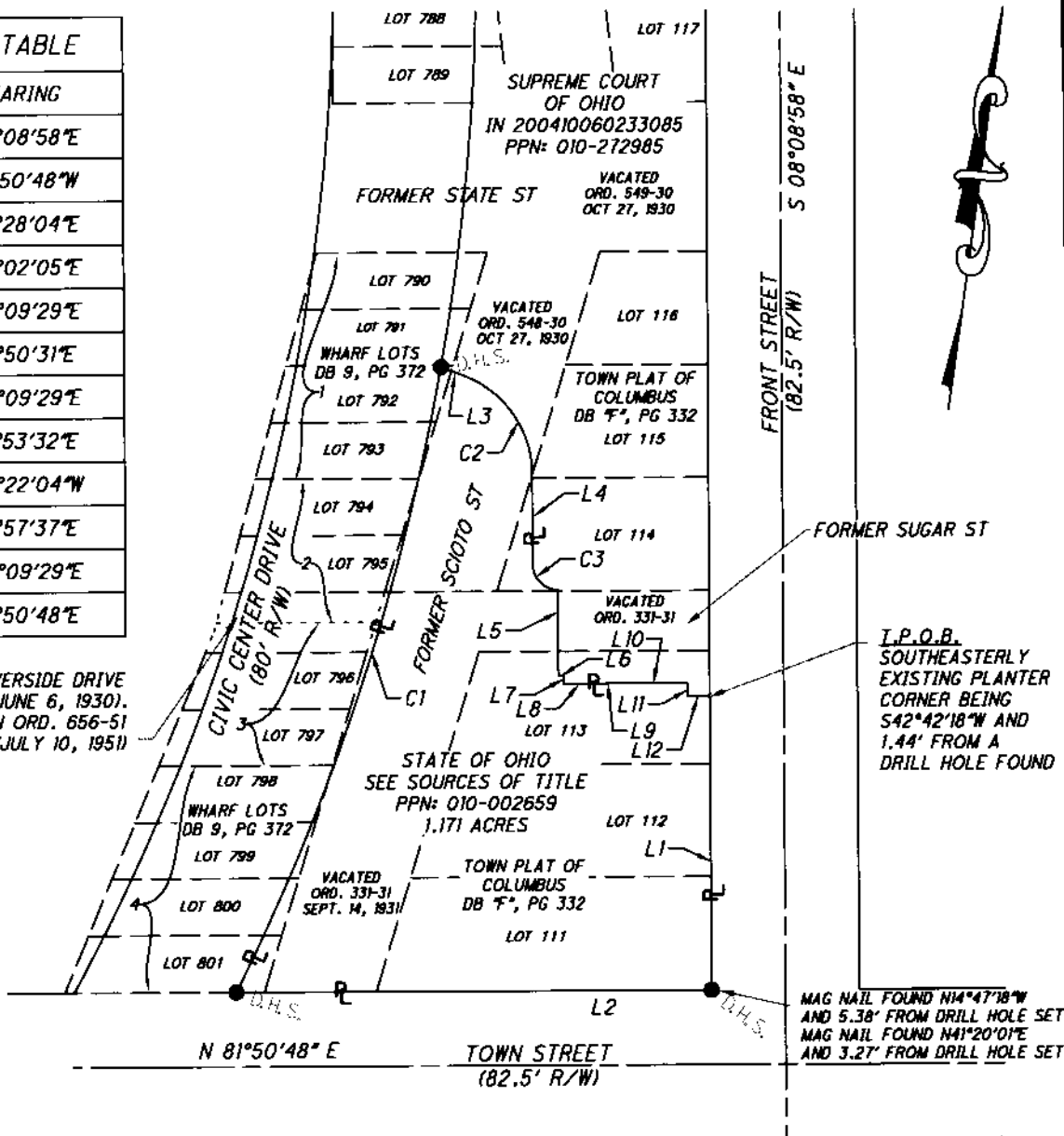
1.171 ACRE TRACT
 LOCATED IN THE STATE OF OHIO, COUNTY OF FRANKLIN,
 CITY OF COLUMBUS, T. 5 N., R. 22 W. OF THE REFUGEE
 LANDS, PART OF LOTS 111, 112, 113, 114, AND 115 OF
 THE PLAT OF THE TOWN OF COLUMBUS, PART OF LOTS
 792, 793, 798, 799, 800, AND 801 OF THE WHARF
 LOTS, AND PART OF VACATED SCIOTO STREET AND SUGAR
 STREET.

PARCEL LINE SEGMENT TABLE		
LINE	DISTANCE	BEARING
L1	162.32'	S08°08'58"E
L2	266.02'	S81°50'48"W
L3	14.08'	S77°28'04"E
L4	49.81'	S08°02'05"E
L5	47.47'	S08°09'29"E
L6	2.83'	N81°50'31"E
L7	4.44'	S08°09'29"E
L8	24.65'	N81°53'32"E
L9	0.53'	N05°22'04"W
L10	44.42'	N81°57'37"E
L11	7.62'	S08°09'29"E
L12	12.61'	N81°50'48"E

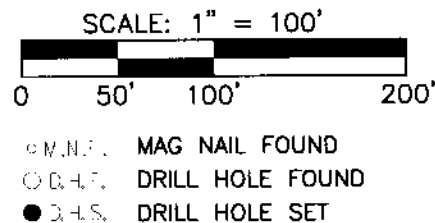
DEDICATED AS RIVERSIDE DRIVE
 IN ORD. 314-30 (JUNE 6, 1930).
 NAME CHANGED IN ORD. 656-51
 (JULY 10, 1951)

SOURCES OF TITLE:

- DB 910, PG 427
- DB 932, PG 294
- DB 941, PG 377
- DB 942, PG 122
- DB 942, PG 197
- DB 942, PG 344
- DB 946, PG 652
- ORD. 24-30
- ORD. 331-31
- ORD. 548-30
- ORD. 2539-2015
- IN 201510300154443



PARCEL CURVE SEGMENT TABLE					
CURVE	ARC LENGTH	RADIUS	DELTA	CHORD BEARING	CHORD LENGTH
C1	365.17'	1262.44'	16°34'24"	N10°34'46"E	363.90'
C2	70.29'	58.00'	69°25'59"	S42°45'05"E	66.06'
C3	22.06'	14.00'	90°17'22"	S53°10'46"E	19.85'



PLAT REFERENCES:

PLAT OF THE TOWN OF COLUMBUS:
 DB "F", PG 332 (DESTROYED BY FIRE)
 REPLATTED IN PB 3, PG 247
 ALSO REPRESENTED IN PB 14, PG 27

WHARF LOTS:

DB 9, PG 372
 ALSO REPRESENTED IN PB 1, PG 291

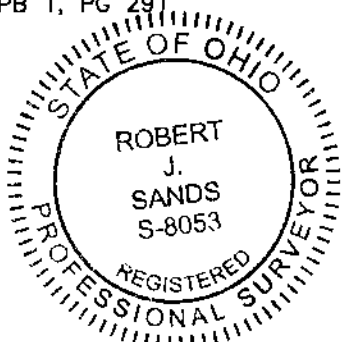
ADJOINING SOURCES OF TITLE:

- 1 - DB 707, PG 77
- 2 - DB 716, PG 135
- 3 - DB 703, PG 295, DB 709, PG 83,
AND DB 171, PG 838
- 4 - WHARF LOTS 798-801 WERE NEVER
GRANTED OUT OF THE CITY OF
COLUMBUS' OWNERSHIP IN THE
WHARF LOTS.

BASIS OF BEARINGS:

BEARINGS ARE BASED ON THE OHIO STATE PLANE COORDINATE
 SYSTEM, SOUTH ZONE (NAOB3(2007)) WITH TIES TO FRANKLIN
 COUNTY MONUMENTS FRANK 43 AND FRANK 143 HAVING A
 RELATIVE BEARING OF SOUTH 87°56'15" EAST.

THIS DRAWING WAS PREPARED BY RUSSELL KOENIG, OHIO
 REGISTERED PROFESSIONAL SURVEYOR NUMBER 8358, AND
 IS BASED ON AN ACTUAL FIELD SURVEY CONDUCTED BY
 DLZ OHIO, INC. IN 2015 UNDER HIS DIRECT SUPERVISION.



DRAWN:	CHK'D:	PROJECT NUMBER:	BY:	DATE:
TPS	RAK	1521-2011-00	Robert J. Sands, P.S. S-8053	09/07/21