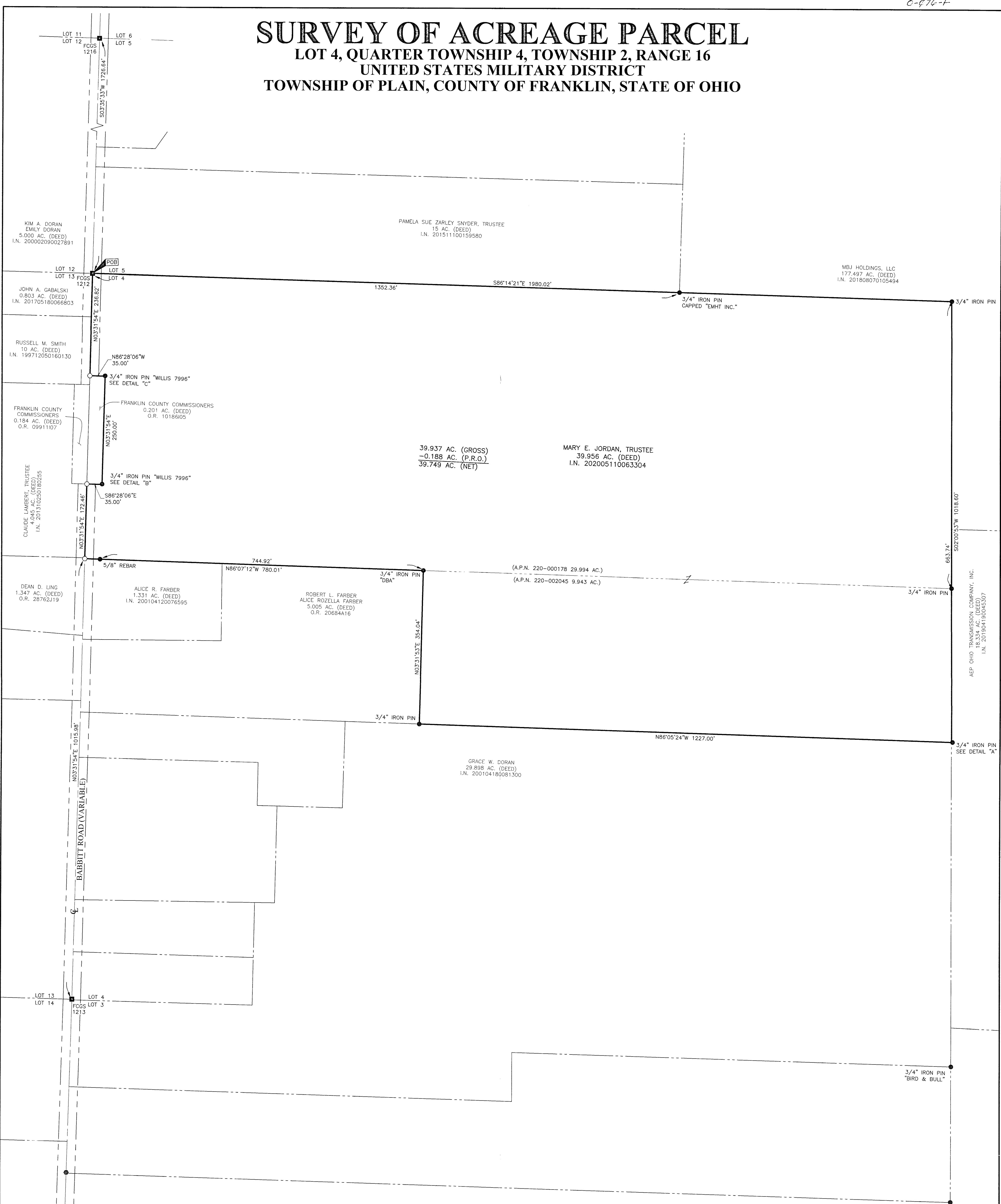


SURVEY OF ACREAGE PARCEL

LOT 4, QUARTER TOWNSHIP 4, TOWNSHIP 2, RANGE 16

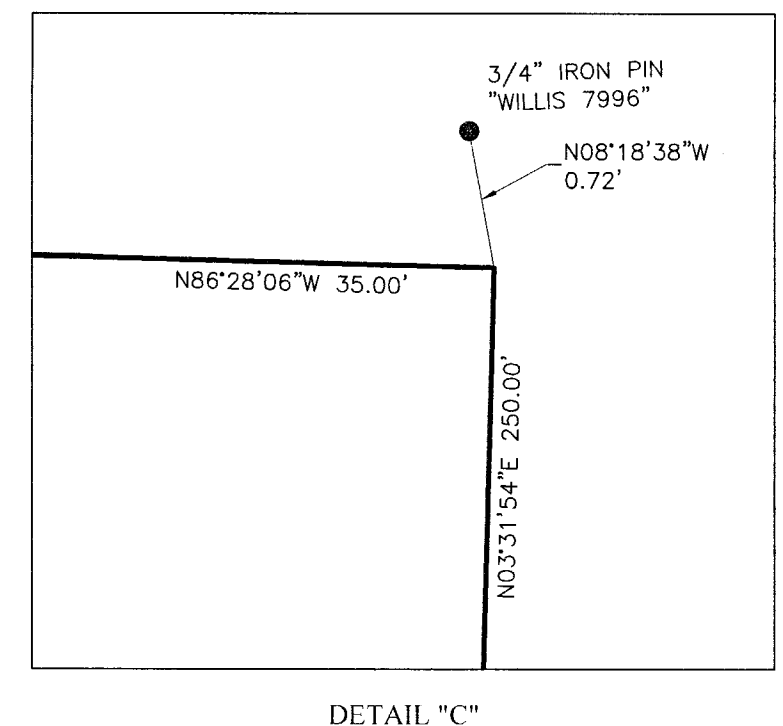
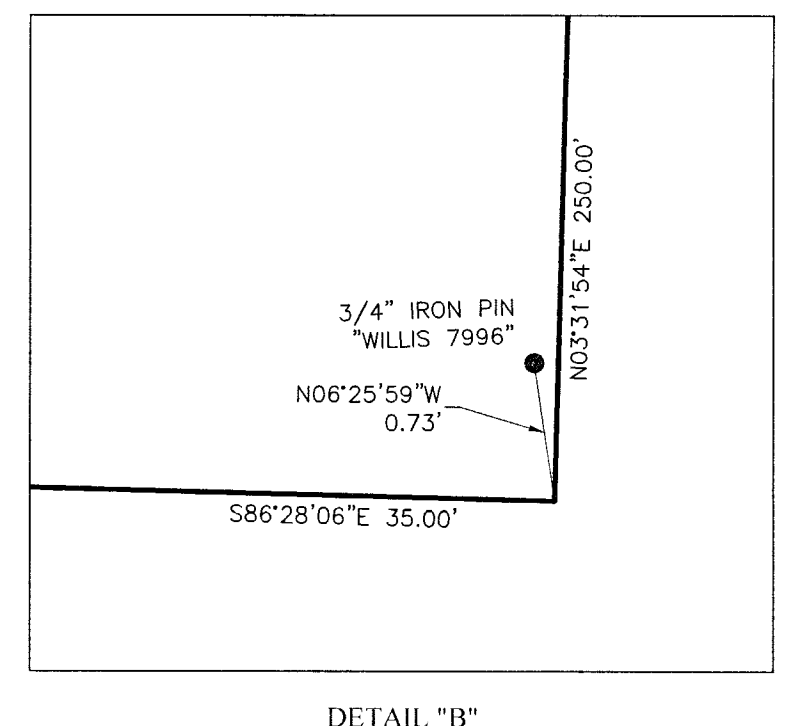
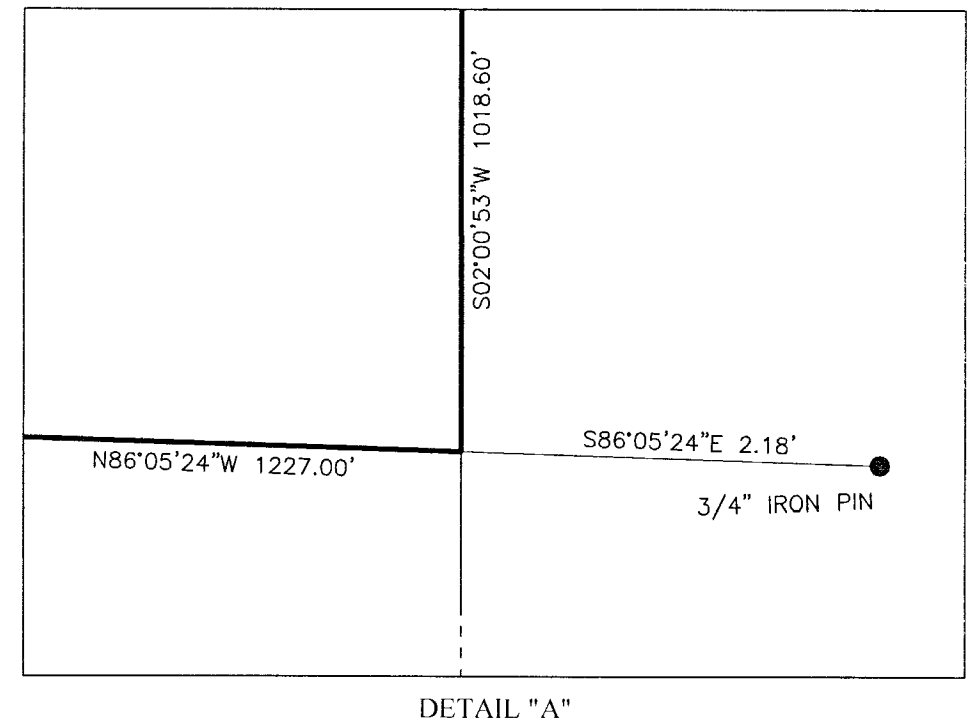
UNITED STATES MILITARY DISTRICT

TOWNSHIP OF PLAIN, COUNTY OF FRANKLIN, STATE OF OHIO

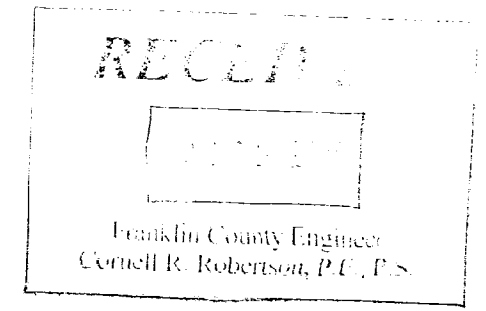
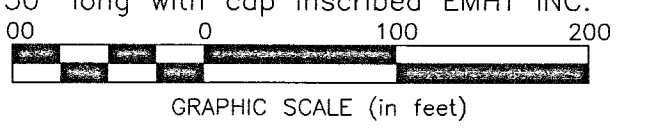


BASIS OF BEARINGS:
 The bearings shown hereon are based on the Ohio State Plane Coordinate System, South Zone, NAD83 (1986 Adjustment). Control for bearings was from coordinates of monuments FRANK80 and FRANK180, having a bearing of North 85° 57' 24" East, as established by the Franklin County Engineering Department using Global Positioning System procedures and equipment.

SURVEY NOTE:
 This survey was prepared using documents of record, prior plats of survey, and observed evidence located by an actual field survey.



- = STONE FND.
 - = MON. FND.
 - = I.P. FND.
 - = I.P. SET
 - = MAG. NAIL FND.
 - = MAG. NAIL SET
 - ▲ = R.R. SPK. FND.
 - = P.K. NAIL FND.
- I.P. Set are 13/16" I.D. iron pipes 30" long with cap inscribed EMHT INC.



By *Heather L. King* 2/8/21
 Heather L. King
 Professional Surveyor No. 8307
 hking@emht.com

| | | |
|---|------|------------------------|
| EMHT Evans, Mischwitz, Hambleton & Tilton, Inc. Engineers • Surveyors • Planners • Scientists 3500 New Albany Road, Columbus, OH 43054 Phone: 614.775.4300 Fax: 614.775.3648 emht.com | | Date: January 18, 2021 |
| | | Scale: 1" = 100' |
| Job No: 2021-0005 | | Sheet: 1 of 1 |
| REVISIONS | | |
| MARK | DATE | DESCRIPTION |
| | | |
| | | |