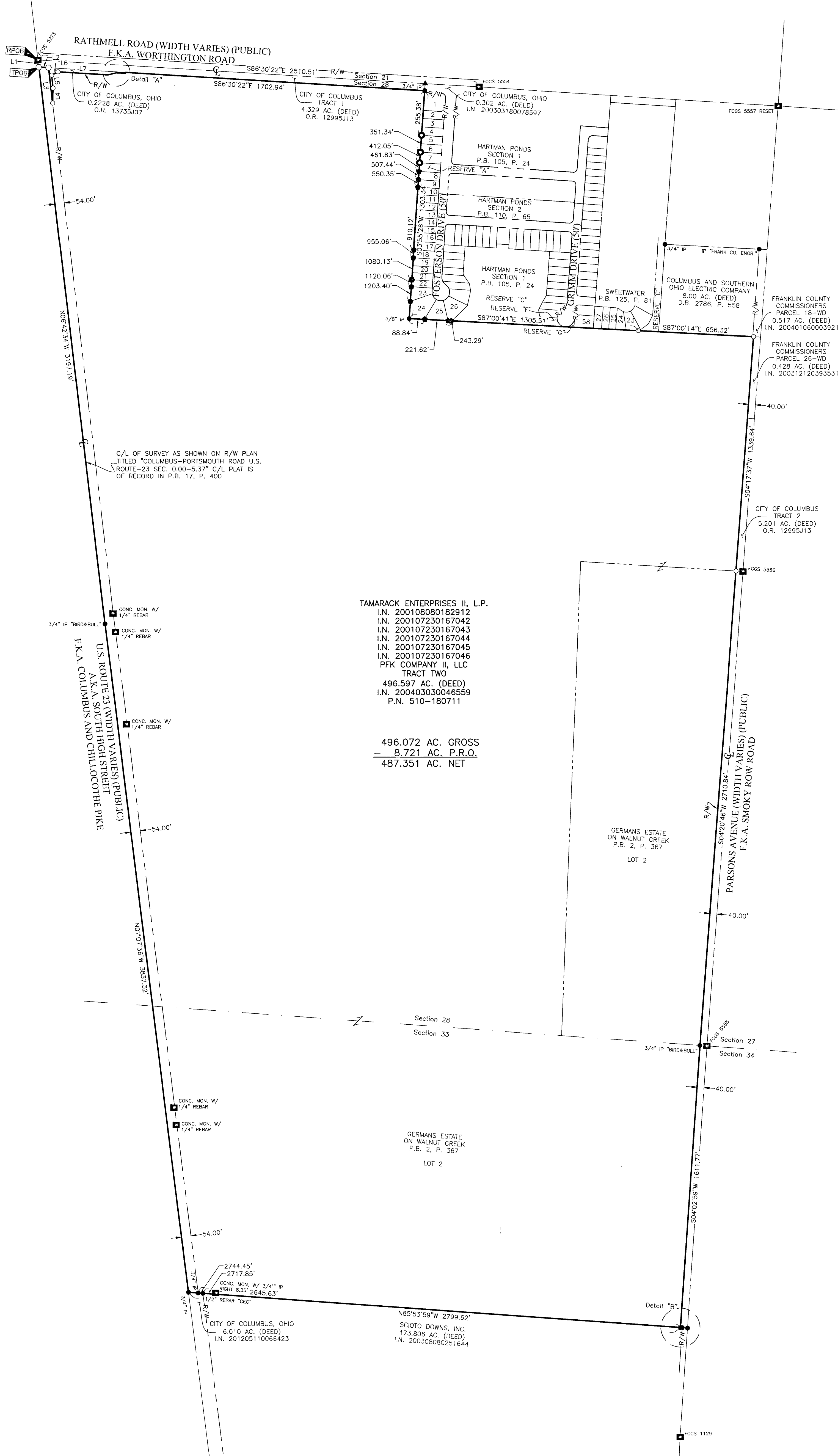


SURVEY OF ACREAGE PARCEL

SECTIONS 28 & 33, TOWNSHIP 4, RANGE 22

CONGRESS LANDS EAST OF THE SCIOTO

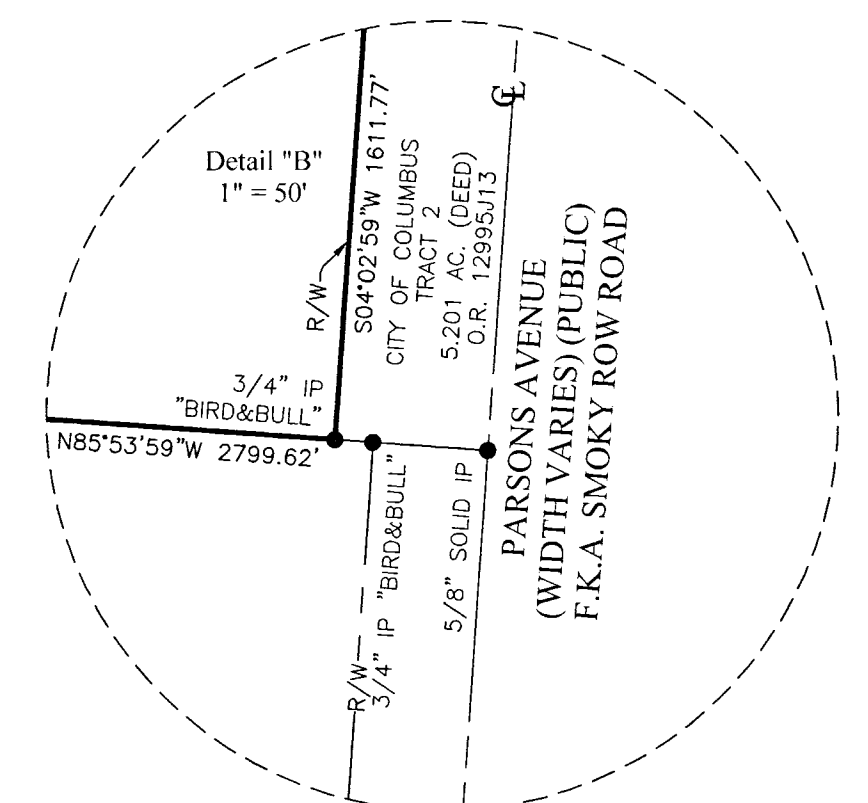
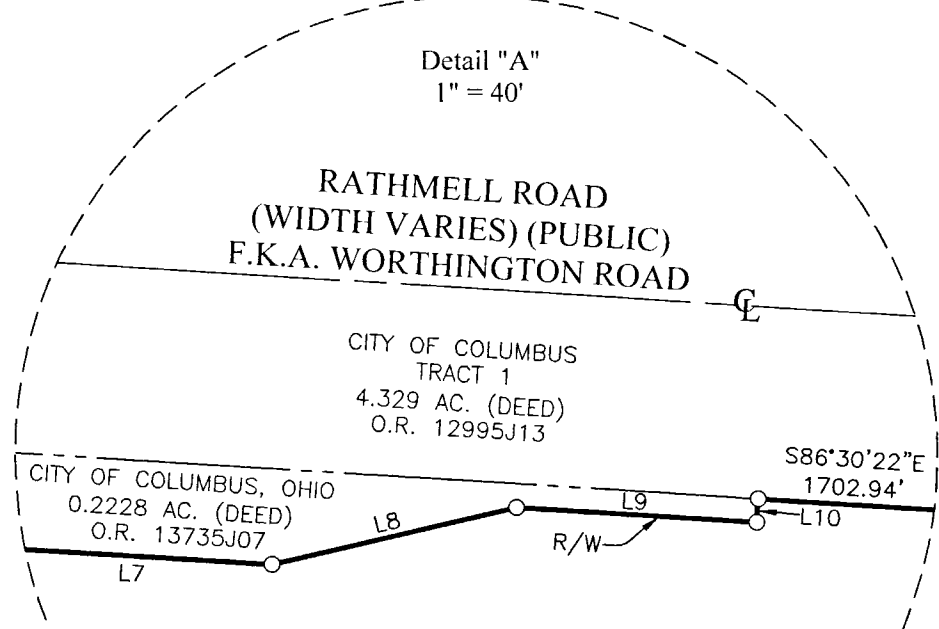
CITY OF COLUMBUS, COUNTY OF FRANKLIN, STATE OF OHIO



LINE	BEARING	DISTANCE
L1	S06°42'34"E	40.64'
L2	S86°30'22"E	54.87'
L3	S06°42'34"E	202.84'
L4	N01°25'14"E	84.85'
L5	N06°42'34"W	73.72'
L6	N60°57'50"E	41.44'
L7	S86°30'22"E	283.20'
L8	N76°47'41"E	52.20'
L9	S86°30'22"E	50.00'
L10	N03°29'38"E	5.00'

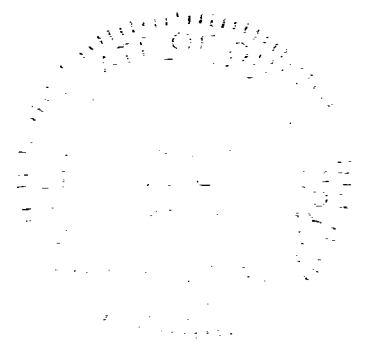
TAMARACK ENTERPRISES II, L.P.
 I.N. 200108080182912
 I.N. 200107230167042
 I.N. 200107230167043
 I.N. 200107230167044
 I.N. 200107230167045
 I.N. 200107230167046
 PFK COMPANY II, LLC
 TRACT TWO
 496.597 AC. (DEED)
 I.N. 2004030046559
 P.N. 510-180711

496.072 AC. GROSS
 = 8.721 AC. P.R.O.
 487.351 AC. NET

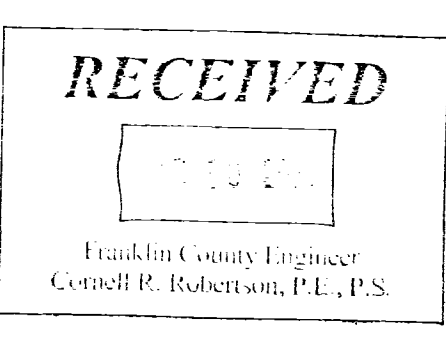


BASIS OF BEARINGS:
 The bearings shown hereon are based on the Ohio State Plane Coordinate System, South Zone, NAD83 (NSRS 2007). Control for bearings was from coordinates of monuments FRANK 17 and FRANK 117, having a bearing of South 07° 33' 00" East, as established by the Franklin County Engineering Department using Global Positioning System procedures and equipment.

SURVEY NOTE:
 This survey was prepared using documents of record, prior plats of survey, and observed evidence located by an actual field survey in April 2016.



By Joshua M. Meyer 3-8-2021
 Date
 Joshua M. Meyer
 Professional Surveyor No. 8485
 jmeyer@emht.com



EMHT		Date: March 8, 2021
Evans, Mechwart, Hamilton & Titon, Inc. Engineers • Surveyors • Planners • Scientists 5500 New Albany Road, Columbus, OH 43054 Phone: 614.775.4500 Toll Free: 888.775.3648		Scale: 1" = 300'
emht.com		Job No: 2020-0254
REVISIONS		Sheet: 1 of 1
MARK	DATE	DESCRIPTION

- = MON. FND.
 - = I.P. FND.
 - = I.P. SET
 - = MAG. NAIL SET
 - ▲ = R.R. SPK. FND.
 - = 1/2" REBAR CAPPED "STANTEC" FND.
 - = 3/4" IP CAPPED "RD ZANDE" FND.
 - = 3/4" IP CAPPED "STANTEC" FND.
- I.P. Set are 13/16" I.D. iron pipes 30" long with cap inscribed EMHT INC.

