



Evans, Mechwart, Hambleton & Tilton, Inc.  
 Engineers • Surveyors • Planners • Scientists  
 5500 New Albany Road, Columbus, OH 43054  
 Phone: 614.775.4500 Toll Free: 888.775.3648  
 emht.com

# SURVEY OF ACREAGE PARCEL

VIRGINIA MILITARY DISTRICT

SURVEY NUMBER 1388

CITY OF GROVE CITY, COUNTY OF FRANKLIN, STATE OF OHIO

Date: December 16, 2020

Scale: 1" = 100'

Job No: 2019-1065

Sheet No: 1 of 1

**RECEIVED**

MAR 26 2021

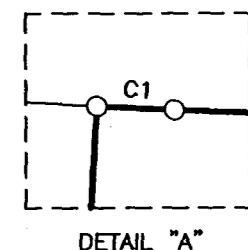
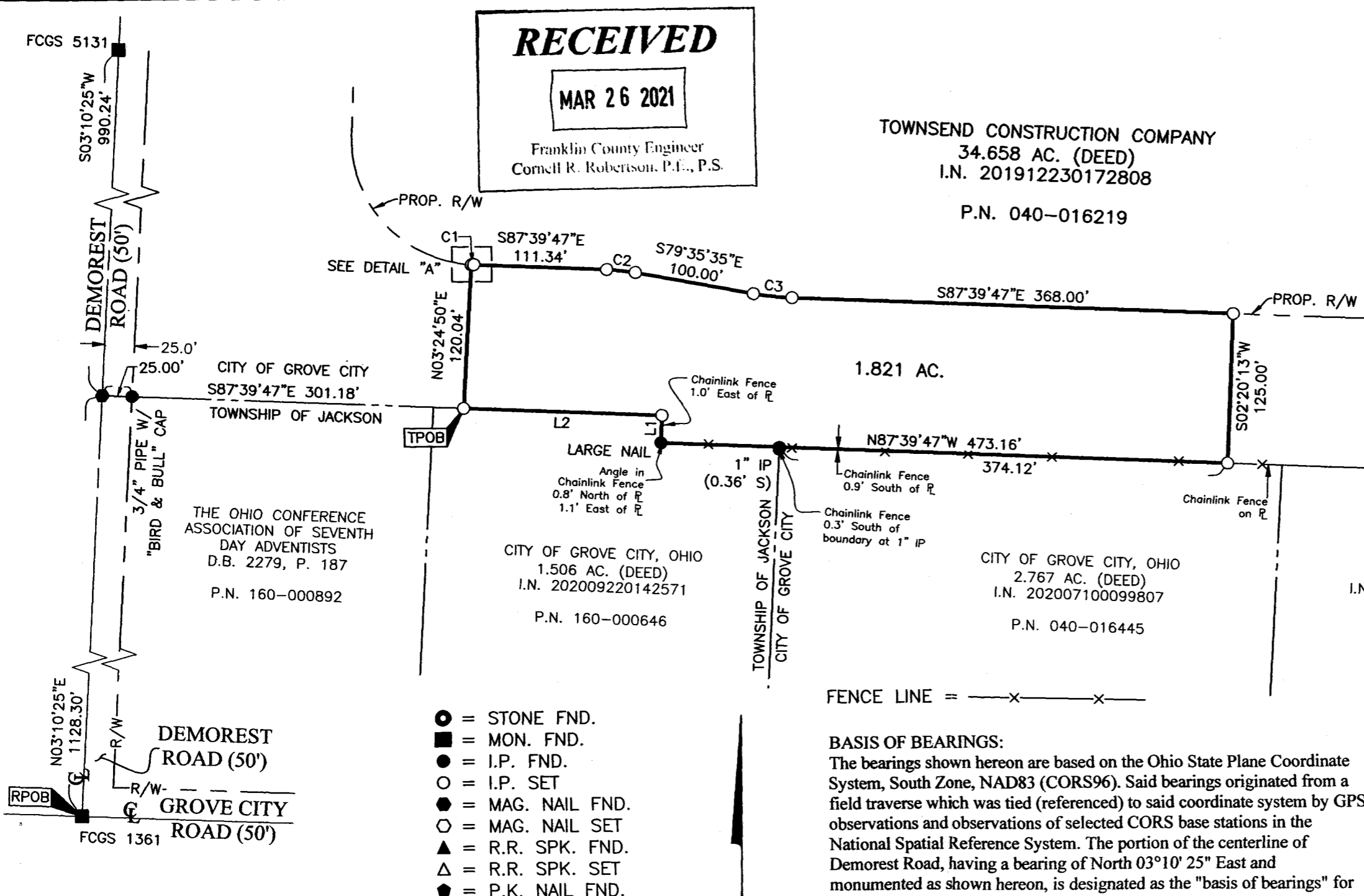
Franklin County Engineer  
 Cornell R. Robertson, P.E., P.S.

TOWNSEND CONSTRUCTION COMPANY  
 34.658 AC. (DEED)  
 I.N. 201912230172808  
 P.N. 040-016219

LINE TABLE			LINE TABLE		
LINE	BEARING	DISTANCE	LINE	BEARING	DISTANCE
L1	N02°20'13"E	23.00'	L2	N87°39'47"W	165.57'

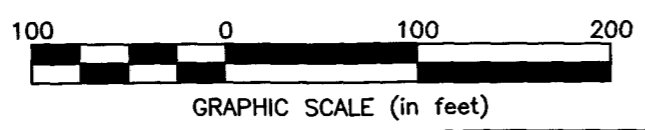
CURVE TABLE					
CURVE	DELTA	RADIUS	ARC	CH. BEARING	CH. DIST.
C1	1°04'37"	105.00'	1.97'	S87°07'29"E	1.97'
C2	8°04'12"	170.00'	23.94'	S83°37'41"E	23.92'
C3	8°04'12"	230.00'	32.40'	S83°37'41"E	32.37'

J:\20191065\DWG\04SHEETS\BOUNDARY\20191065-VS-BNDY-04\_A.DWG plotted by KING, HEATHER on 12/17/2020 1:50:28 PM last saved by KING on 12/17/2020 1:50:02 PM



- = STONE FND.
- = MON. FND.
- = I.P. FND.
- = I.P. SET
- = MAG. NAIL FND.
- = MAG. NAIL SET
- ▲ = R.R. SPK. FND.
- △ = R.R. SPK. SET
- = P.K. NAIL FND.

I.P. Set are 13/16" I.D. iron pipes 30" long with cap inscribed EMHT INC.



FENCE LINE = —x—x—x—

**BASIS OF BEARINGS:**  
 The bearings shown hereon are based on the Ohio State Plane Coordinate System, South Zone, NAD83 (CORS96). Said bearings originated from a field traverse which was tied (referenced) to said coordinate system by GPS observations and observations of selected CORS base stations in the National Spatial Reference System. The portion of the centerline of Demorest Road, having a bearing of North 03°10' 25" East and monumented as shown hereon, is designated as the "basis of bearings" for this plat.

**SURVEY NOTE:**  
 This survey was prepared using documents of record, prior plats of survey, and observed evidence located by an actual field survey in October 2019.

LORI A. KIDWELL  
 KORY F. METCALF  
 5.923 AC. (DEED)  
 I.N. 201503120030565  
 P.N. 040-015377



By *Joshua M. Meyer* 12-17-2020  
 Joshua M. Meyer  
 Professional Surveyor No. 8485  
 jmeyer@emht.com  
 Date