

SURVEY OF ACREAGE PARCEL

VIRGINIA MILITARY DISTRICT SURVEY NOS. 3000 & 4854

CITY OF HILLIARD, COUNTY OF FRANKLIN, STATE OF OHIO

TRIOLOGY REAL ESTATE HILLIARD, LLC
8.0284 AC. (DEED)
I.N. 202002120021975

WOLPERT ENTERPRISES, LIMITED
22.569 AC. (DEED)
I.N. 201712180177391

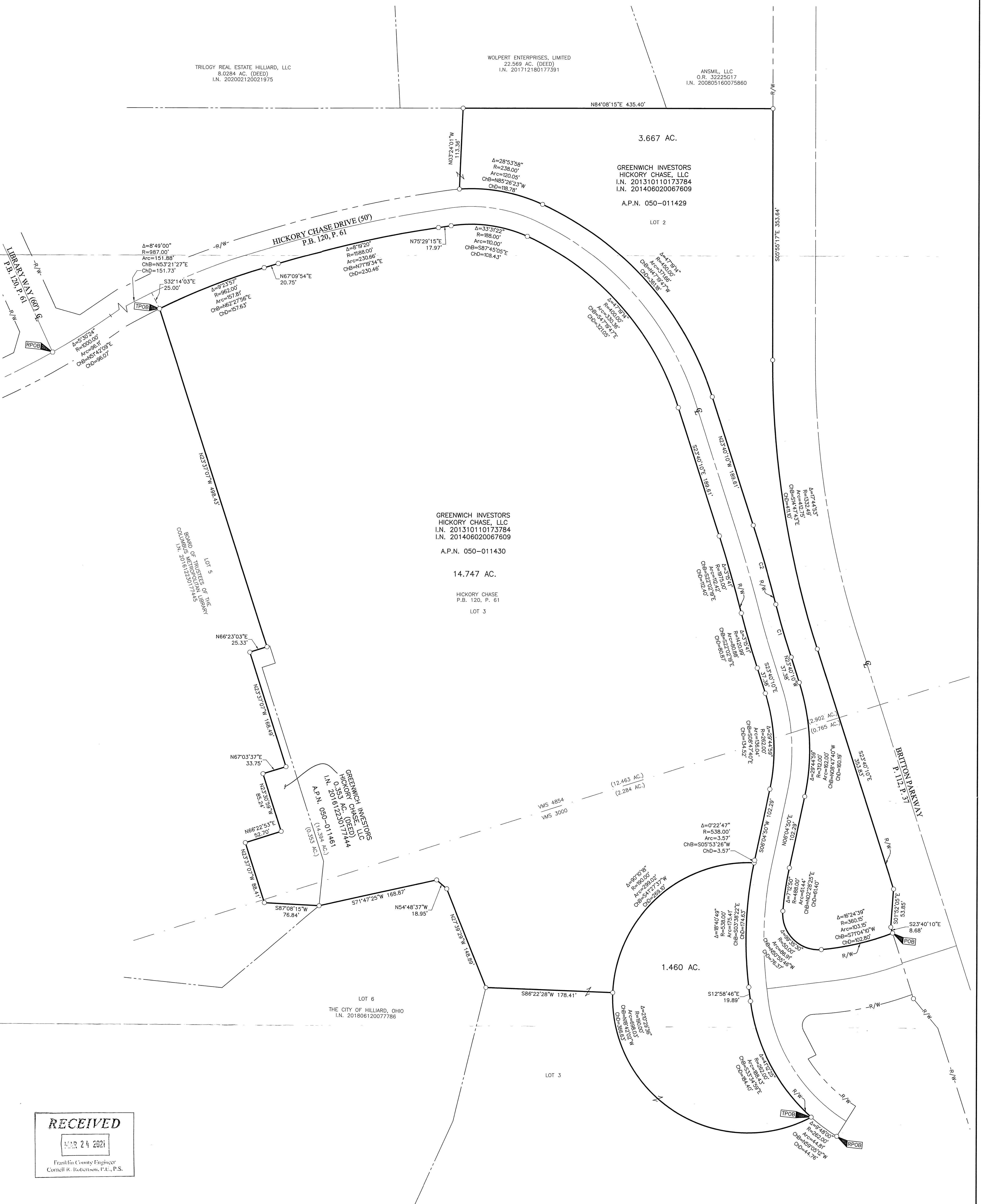
ANSML, LLC
0.R. 32225G17
I.N. 200805160075860

3.667 AC.

GREENWICH INVESTORS
HICKORY CHASE, LLC
I.N. 201310110173784
I.N. 201406020067609

A.P.N. 050-011429

LOT 2



GREENWICH INVESTORS
HICKORY CHASE, LLC
I.N. 201310110173784
I.N. 201406020067609

A.P.N. 050-011430

14.747 AC.

HICKORY CHASE
P.B. 120, P. 61
LOT 3

LOT 6
THE CITY OF HILLIARD, OHIO
I.N. 201806120077786

1.460 AC.

(12.463 AC.)
(2.284 AC.)

VMS 4854
VMS 3000

RECEIVED
MAR 24 2021
Franklin County Engineer
Cornell R. Robertson, P.E., P.S.

CURVE	DELTA	RADIUS	ARC	CH. BEARING	CH. DIST.
C1	3°15'41"	1370.99'	78.04'	N22°02'19"W	78.03'
C2	3°15'41"	2025.00'	115.27'	N22°02'19"W	115.25'

- = STONE FND.
- = MON. FND.
- = I.P. FND.
- = I.P. SET
- = MAG. NAIL FND.
- = MAG. NAIL SET
- ▲ = R.R. SPK. FND.
- △ = R.R. SPK. SET
- ◆ = P.K. NAIL FND.

I.P. Set are 13/16" I.D. iron pipes
30" long with cap inscribed EMHT INC.
GRAPHIC SCALE (in feet)

BASIS OF BEARINGS:
The Bearings shown hereon are based on the Ohio State Plane Coordinate System, South Zone, as per NAD83 (1986 Adjustment). Control for bearings was from coordinates of monuments FCGS 0005 RESET and FCGS 0006, having a bearing of North 23° 37' 07" West, established by the Franklin County Engineering Department, using Global Positioning System procedures and equipment.

SURVEY NOTE:
This survey was prepared using documents of record, prior plats of survey, and observed evidence located by an actual field survey completed in April 2014 and June 2019.



By *Heather L. King* 4/7/20
Heather L. King
Professional Surveyor No. 8307
hking@emht.com

EMHT		Date: April 6, 2020
Evans, Mechwart, Hamblen & Biron, Inc. Engineers • Surveyors • Planners • Scientists 5500 New Albany Road, Columbus, OH 43054 Phone: 614.775.4300 Fax: 614.775.3648 emht.com		Scale: 1" = 60'
		Job No: 2020-0167
		Sheet: 1 of 1
REVISIONS		
MARK	DATE	DESCRIPTION