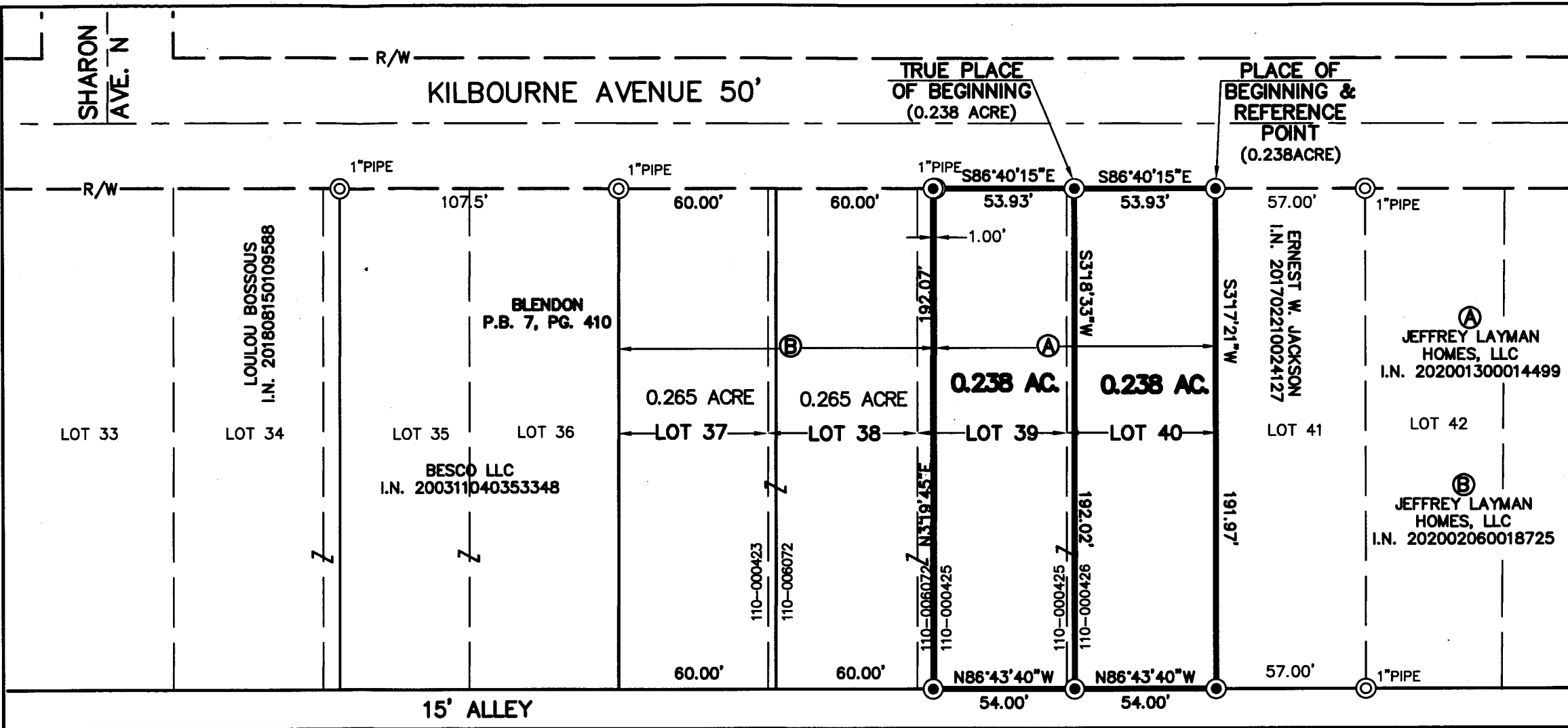


I:\212134\_Lay\_Cleveland\7.0\_Production\7.3\_Design\02\_Survey-Mapping\KILBOURNE SPLITS 2.dwg by: david.chiesa on 02/17/2021 09:19:35 am ~IBI Group



**IBI GROUP**  
 8101 North High Street, Suite 100  
 Columbus OH 43235 USA  
 tel 614 818 4900 fax 614 818 4901  
 ibigroup.com

**LOT SPLIT EXHIBIT**  
 KILBOURNE AVENUE  
 BLENDON TOWNSHIP,  
 FRANKLIN COUNTY, OHIO

- LEGEND**
- IRON PIN SET  
5/8" SOLID IRON PIN,  
30" LONG W/PLASTIC CAP  
"IBI GROUP S-6872/S-7740"
  - IRON PIN FOUND  
(AS NOTED)

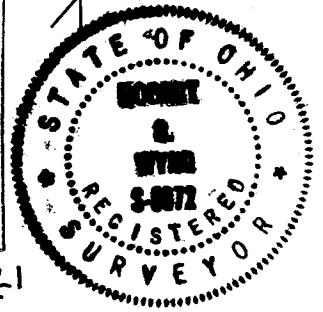
**BEARING REFERENCE**

Bearings hereon are based on GPS observations utilizing the Ohio State Plane Coordinate System, South Zone, NAD 83 (2011) which establishes a bearing of South 86°40'15" East for the centerline of Kilbourne Avenue.

RECEIVED

FEB 19 2021

Franklin County Engineer  
 Cornell K. Robertson, E.L.P.S.



*Robert W. Johnson*  
 REGISTERED SURVEYOR NO. 6872 DATE 2/17/21

