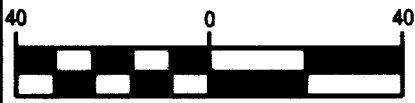


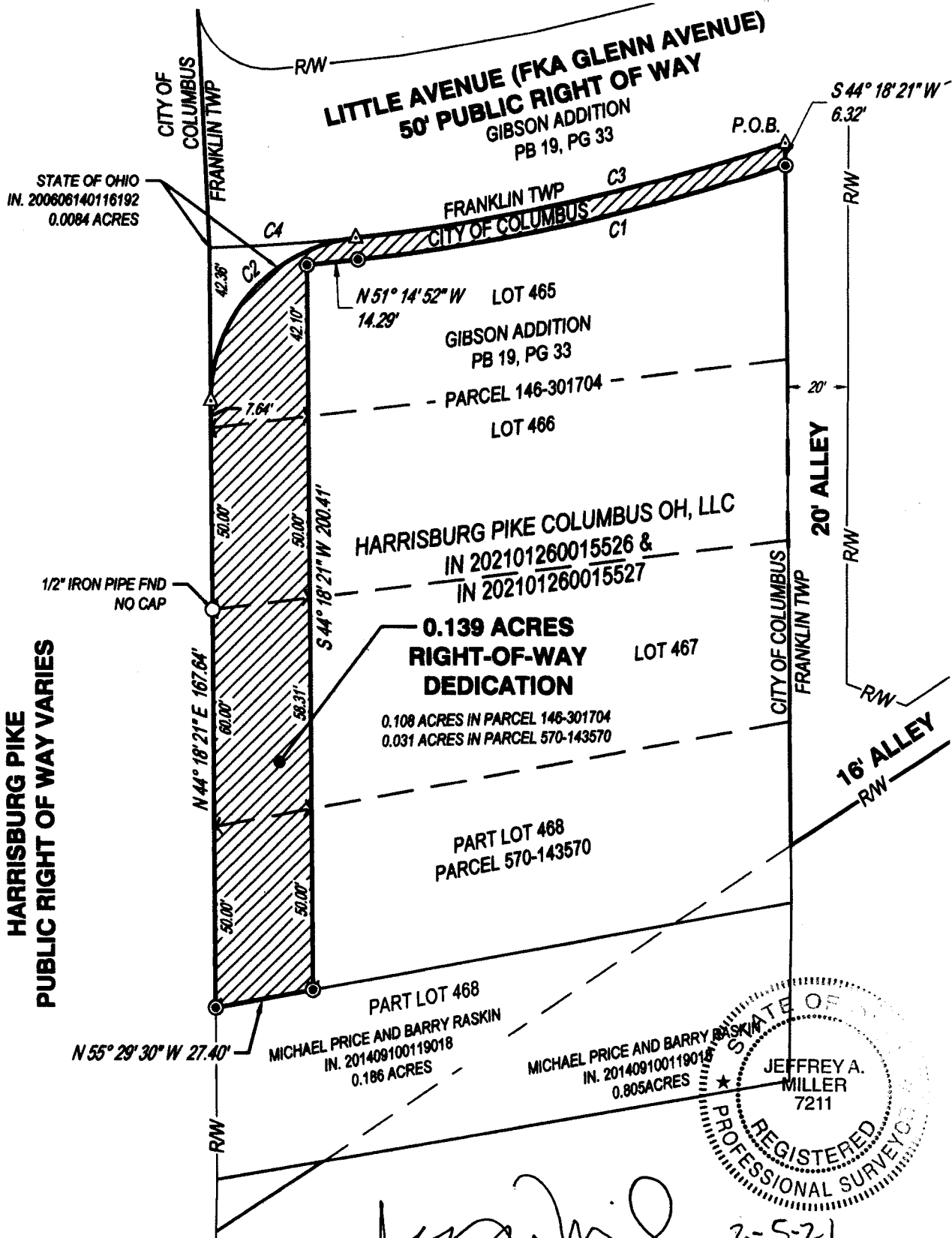
RIGHT-OF-WAY DEDICATION

STATE OF OHIO, COUNTY OF FRANKLIN,
CITY OF COLUMBUS, VIRGINIA MILITARY SURVEY 717

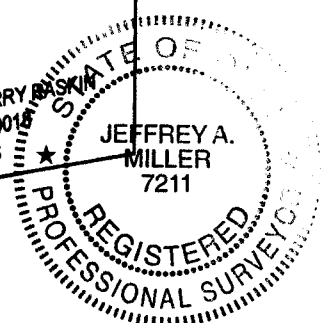


GRAPHIC SCALE (IN FEET)

Curve table				
Curve	Radius	Arc Length	Chord	Delta Angle
C1	551.90'	121.74'	N57° 34' 00"W, 121.49'	12° 38' 17"
C2	45.00'	66.32'	N86° 31' 45"E, 60.48'	84° 26' 47"
C3	545.91'	122.39'	S57° 40' 13"E, 122.13'	12° 50' 42"
C4	545.91'	40.73'	S49° 06' 38"E, 40.72'	4° 16' 28"



**HARRISBURG PIKE
PUBLIC RIGHT OF WAY VARIES**



JEFFREY A. MILLER, OHIO P.S. NO. 7211
JEFF.MILLER@CESOINC.COM

LEGEND

- IRON PIPE FOUND
- IRON PIN TO BE SET (5/8"x30" REBAR W/ CESO CAP)
- △ MAG NAIL TO BE SET

BASIS OF BEARING
BEARINGS BASED ON N 44° 18' 21" E, THE EASTERLY RIGHT OF WAY LINE OF HARRISBURG PIKE AS DETERMINED BY A SERIES OF GPS OBSERVATIONS USING ODOT VRS NETWORK, OHIO STATE PLANE COORDINATE SYSTEM, OHIO SOUTH ZONE, NAD83 (2011).

0.139 ACRE RIGHT-OF-WAY DEDICATION	
V.M.S. 717	FRANKLIN COUNTY, OHIO
CITY OF COLUMBUS	
SCALE: 1"=40'	DATE: 02/05/21
DESIGN: N/A	JOB NO.: 757503
DRAWN: DAS	SHEET NO.: 1 OF 1
CHECKED: STB	
 WWW.CESOINC.COM	