

RECEIVED

JAN 26 2021

J-3-A

Franklin County Engineer
Cornell R. Robertson, P.E., P.S.

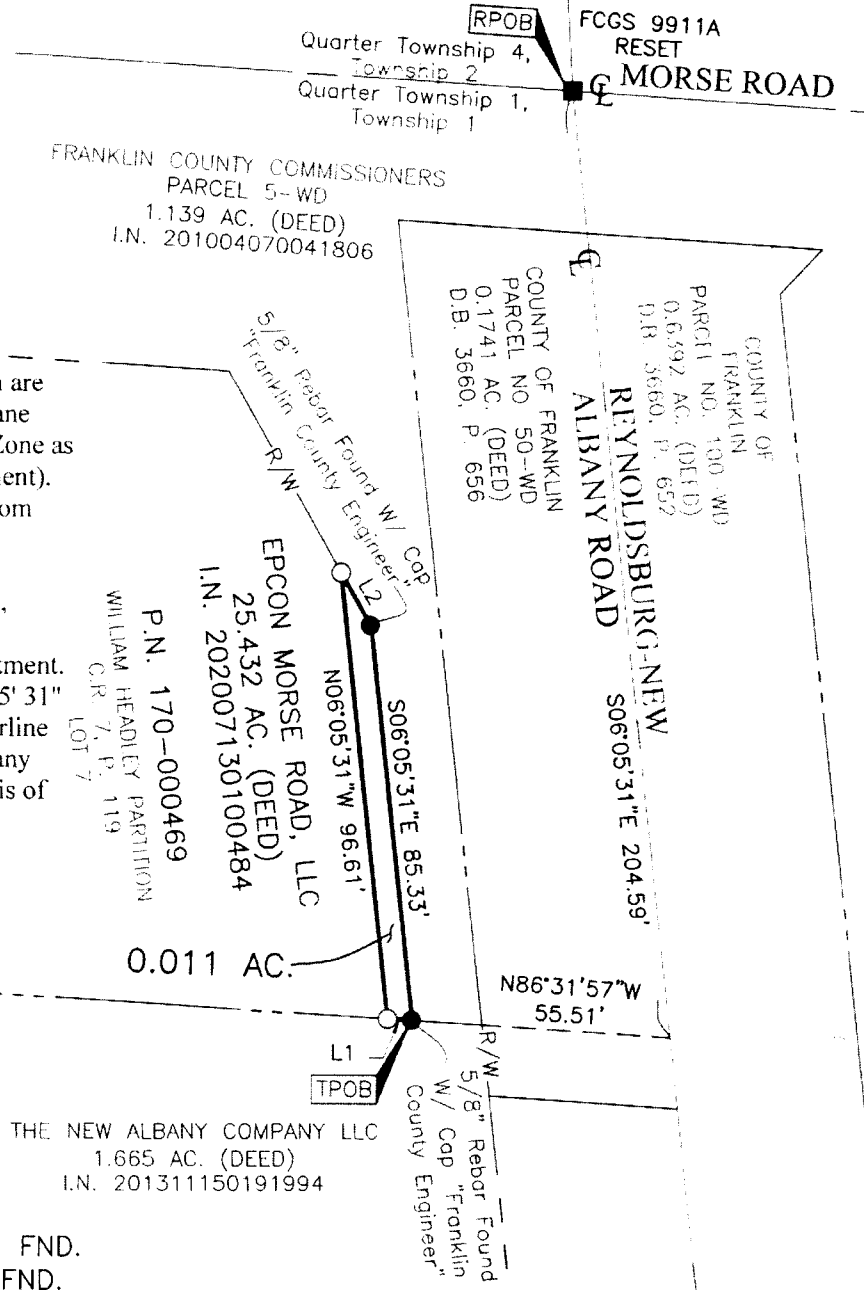


Evans, Mechwart, Hambleton & Tilton, Inc.
Engineers • Surveyors • Planners • Scientists
4500 New Albany Road, Columbus, OH 43054
Phone: 614.775.4500 Toll Free: 888.775.3648
emht.com

SURVEY OF ACREAGE PARCEL
QUARTER TOWNSHIP 1, TOWNSHIP 1, RANGE 16
UNITED STATES MILITARY DISTRICT
TOWNSHIP OF JEFFERSON, COUNTY OF FRANKLIN, STATE OF OHIO

Date: December 10, 2020 Scale: 1" = 40' Job No: 2020-0056 Sheet No: 1 of 1

PRELIMINARY APPROVAL
BY: nichols
12/11/2020



BASIS OF BEARINGS:
The bearings shown hereon are based on the Ohio State Plane Coordinate System South Zone as per NAD83 (1986 Adjustment). Control for bearings was from coordinates of monuments A13RESET, FCGS6612, FCGS6640 and FCGS4425, established by the Franklin County Engineering Department. The bearing of South 06° 05' 31" West, assigned to the centerline of Reynoldsburg-New Albany Road, is designated the basis of bearings for this survey.

SURVEY NOTE:
This survey was prepared using documents of record, prior plats of survey, and observed evidence located by an actual field survey.

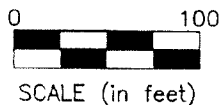
J:\2020\0056\DWG\C45\FETS\BOUNDARY\20200056-VS-BNDY-03.DWG plotted by CHMAS, JACOB on 12/10/2020 1:15:48 PM
J:\2020\0056\DWG\C45\FETS\BOUNDARY\20200056-VS-BNDY-03.DWG plotted by CHMAS, JACOB on 12/10/2020 1:15:56 PM last saved by CHMAS on 12/10/2020 1:15:48 PM

- = STONE FND.
- = MON. FND.
- = I.P. SET
- = MAG. NAIL FND.
- = MAG. NAIL SET
- = R.K. SPK. FND.
- = P.K. NAIL FND.

I.P. Set are 13/16" I.D. iron pipes
30" long with copper lined EMHT INC.

LINE TABLE

LINE	BEARING	DISTANCE
L1	N86°31'57"W	5.33'
L2	S29°28'43"E	13.25'



By *Matthew A. Kirk*
Matthew A. Kirk
Professional Surveyor No. 7865
mkirk@emht.com

10 DEC 20
Date