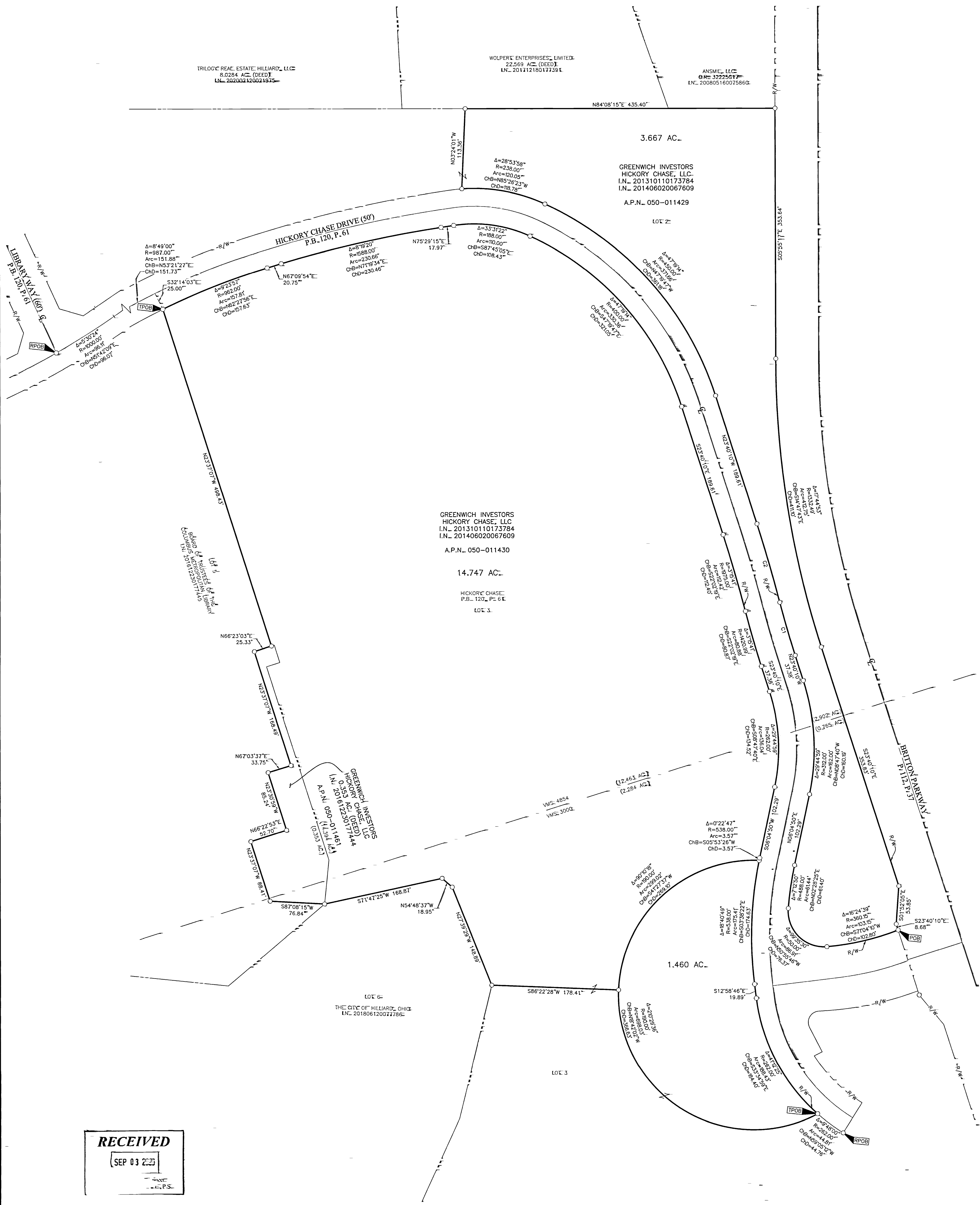


# SURVEY OF ACREAGE PARCEL

## VIRGINIA MILITARY DISTRICT SURVEY NOS. 3000 & 4854

### CITY OF HILLIARD, COUNTY OF FRANKLIN, STATE OF OHIO



**RECEIVED**  
SEP 03 2023

CURVE	DELTA	RADIUS	ARC	CH. BEARING	CH. DIST.
C1	3°15'41"	1370.89'	78.04'	N22°02'19"W	78.03'
C2	3°15'41"	2025.00'	115.25'	N22°02'19"W	115.25'

**BASIS OF BEARINGS=**  
The Bearings shown hereon are based on the Ohio State Plane Coordinate System, South Zone, as per NAD83 (1986 Adjustment). Control for bearings was from coordinates of monuments FCGS 0005 RESET and FCGS 0006, having a bearing of North 23° 37' 07" West, established by the Franklin County Engineering Department, using Global Positioning System procedures and equipment.

**SURVEY NOTE=**  
This survey was prepared using documents of record, prior plats of survey and observed evidence located by an actual field survey completed in April 2014 and June 2019.

- = STONE\_FND\_
  - = MON\_FND\_
  - = I.P.\_FND\_
  - = I.P.\_SET
  - = MAG\_NAIL\_FND\_
  - = MAG\_NAIL\_SET
  - ▲ = R.R.\_SPK\_FND\_
  - △ = R.R.\_SPK\_SET
  - = P.K.\_NAIL\_FND\_
- I.P.\_Set are 13/16" I.D. iron pipes 30" long with cap inscribed EMHT INC.
- GRAPHIC SCALE: (in feet)



By *Heather L. King* 4/7/20  
Heather L. King  
Professional Surveyor No. 8307  
hking@emht.com

**EMHT**  
Evans, Mechwart, Hambleton & Tilton, Inc.  
Engineers • Surveyors • Planners • Scientists  
5500 New Albany Road, Columbus, OH 43054  
Phone: 614.775.4500 Fax: 614.775.3648

Date: April 6, 2020  
Scale: 1" = 60'  
Job No: 2020-0167  
Sheet: 1 of 1

REVISIONS		
MARK	DATE	DESCRIPTION