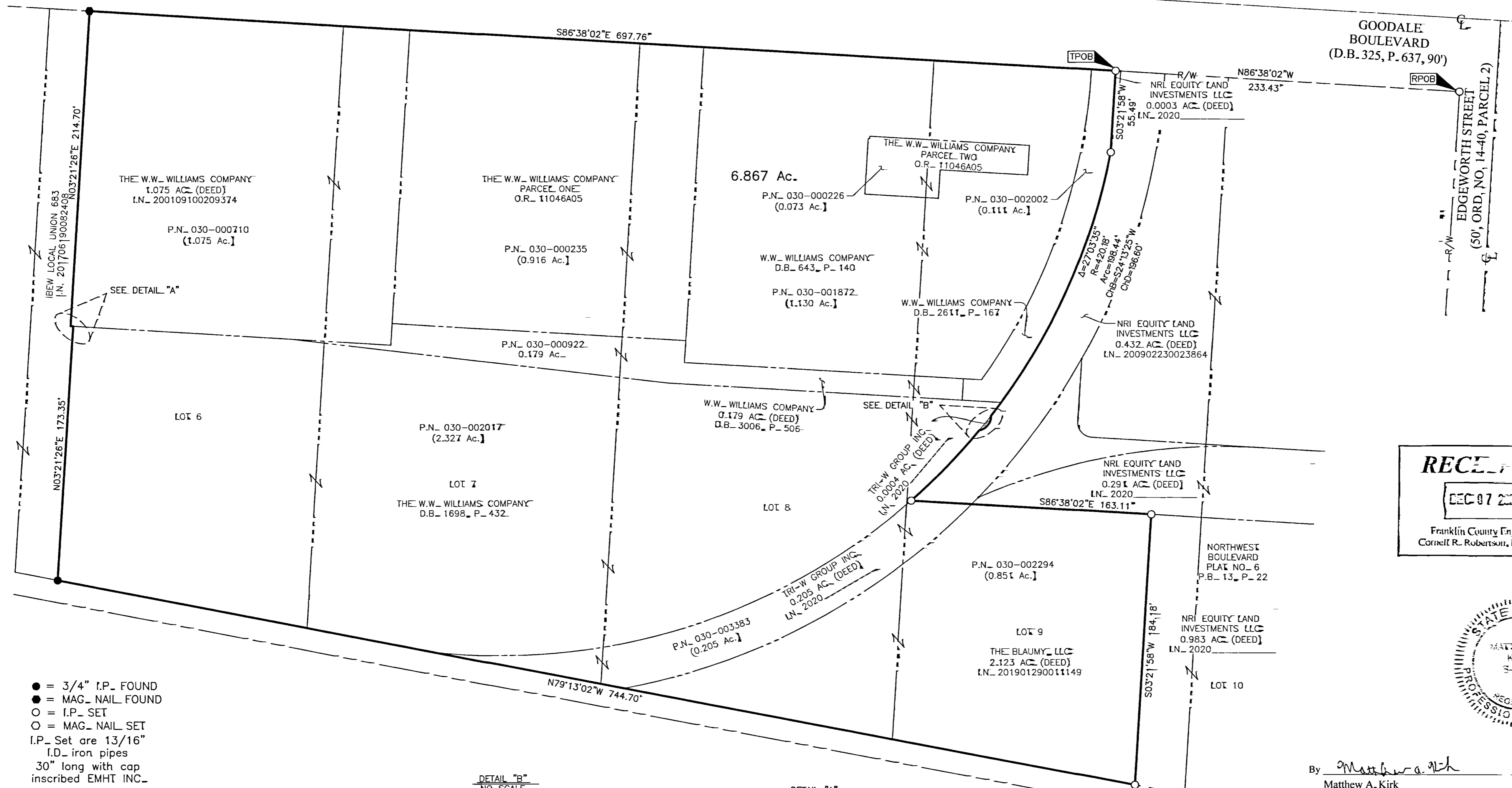


SURVEY OF ACREAGE PARCEL

SECTION 7, TOWNSHIP 5, RANGE 22

REFUGEE LANDS

CITY OF GRANDVIEW HEIGHTS, COUNTY OF FRANKLIN, STATE OF OHIO



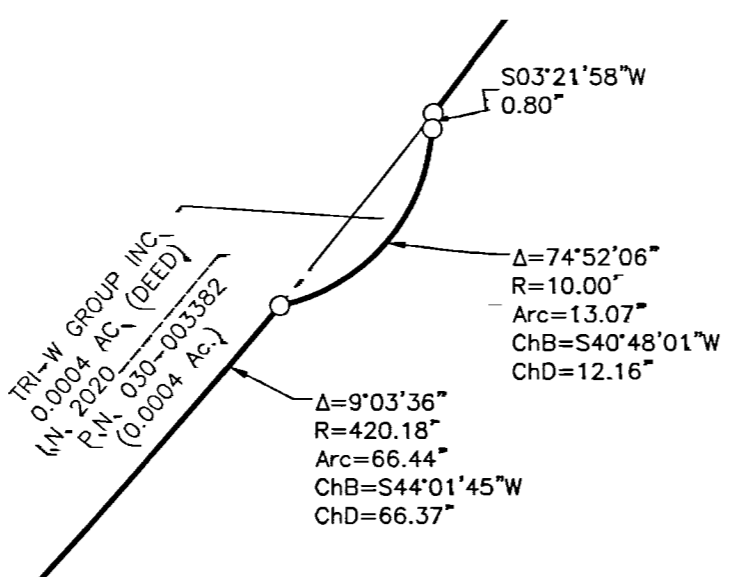
RECEIVED
DEC 07 2020
Franklin County Engineer
Cornell R. Robertson, P.E., P.S.



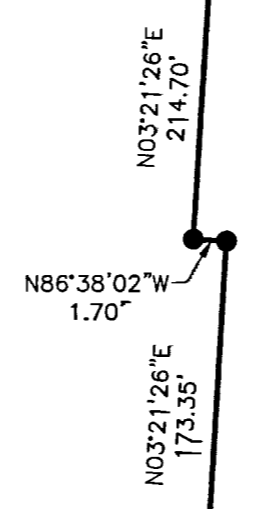
By Matthew A. Kirk 4 Dec 20
Matthew A. Kirk
Professional Surveyor No. 7865
mkirk@emht.com Date

- = 3/4" I.P. FOUND
- = MAG. NAIL FOUND
- = I.P. SET
- = MAG. NAIL SET
- I.P. Set are 13/16"
- I.D. iron pipes
- 30" long with cap
- inscribed EMHT INC.

DETAIL "B"
NO SCALE

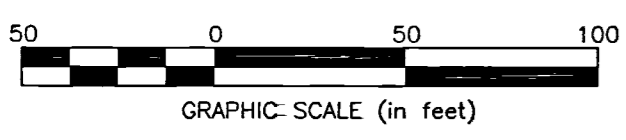


DETAIL "A"
NO SCALE



BASIS OF BEARINGS=
 The bearings shown hereon are based on the Ohio State Plane Coordinate System, South Zone, as per NAD83 (1986). Control for the bearings was from coordinates of monuments 5-83 and 4-83, having a bearing of North 00° 22' 10" West for a portion of the west limited access right-of-way line of Olentangy River Road, established by the Franklin County Engineering Department using Global Positioning System procedures and equipment.

SURVEY NOTE=
 This survey was prepared using documents of record, prior plats of survey, and observed evidence located by an actual field survey.



EMHT Evans, Mechwart, Hambleton & Tilton, Inc. Engineers • Surveyors • Planners • Scientists 5500 New Albany Road, Columbus, OH 43054 Phone: 614.775.4500 Toll Free: 888.775.3648 emht.com		Date= December 4, 2020
		Scale= 1" = 50'
		Job No= 2020-1183
		Sheet= 1 of 1
REVISIONS		
MARK	DATE	DESCRIPTION

J:\20201183\DWG\ASHEETS\BOUNDARY_20201183-VS-BNDY-13.DWG plotted by KIRK, MATTHEW on 12/4/2020 7:51:45 AM last saved by MKIRK on 12/4/2020 7:51:35 AM