

**RECEIVED**  
 NOV 23 2020  
 Franklin County Engineer  
 Cornell R. Robertson, P.E., P.S.

Residences at Towne  
 Center Holdings, Ltd.  
 I.N. 200102090027107  
 41.603 Ac.

Franklin County  
 Commissioners  
 I.N. 200410260247436  
 Parcel No. 74WD  
 0.112 Ac.

Residences at Towne  
 Center Holdings, Ltd.  
 I.N. 200102090027107  
 41.603 Ac.

Gamma Columbus, LLC  
 I.N. 200403090051193  
 0.999 Ac.  
 APN: 520-162410

Gamma Columbus, LLC  
 I.N. 200403090051193  
 Orig. 5.511 Ac.  
 APN: 520-162410

Gamma Columbus, LLC  
 I.N. 200403090051193  
 Orig. 5.511 Ac.  
 APN: 520-162410

Somerset Place, LLC  
 I.N. 202005260071641  
 2.426 Ac.

1.974 Ac.

$\Delta = 89^{\circ}33'00''$   
 $R = 20.00'$   
 $Arcl = 31.26'$   
 $ChB = S48^{\circ}39'17''W$   
 $ChD = 28.17'$

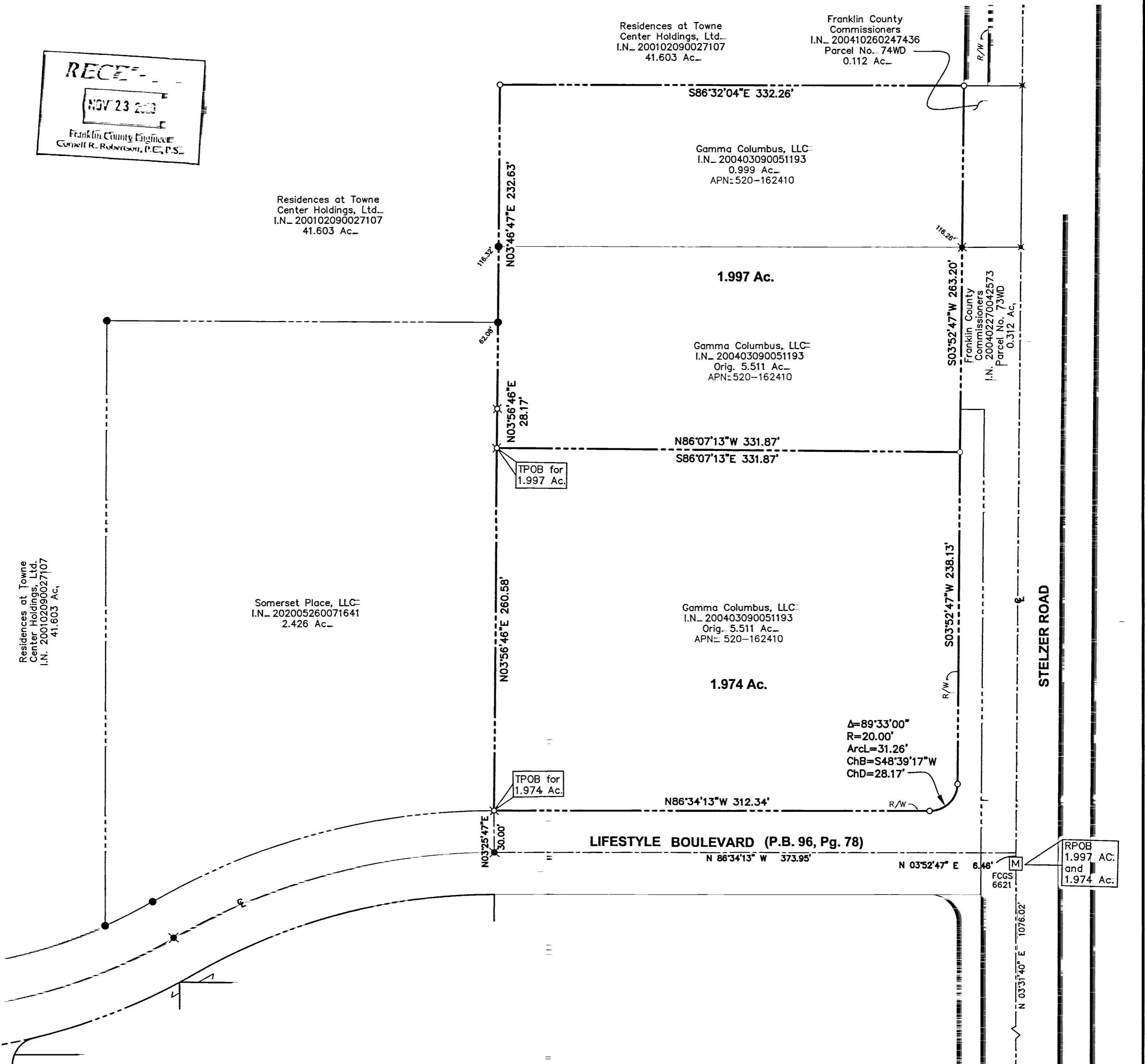
Residences at Towne  
 Center Holdings, Ltd.  
 I.N. 200102090027107  
 41.603 Ac.

TPOB for  
 1.997 Ac.

TPOB for  
 1.974 Ac.

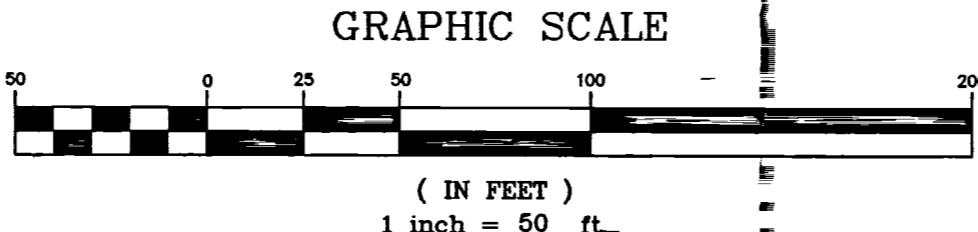
RPOB  
 1.997 AC.  
 and  
 1.974 AC.

Z:\19-0004-163\DWG\PRODUCTION DRAWINGS\SURVE\19-0004-163 east parcel lot split exhibits.dwg Layout1 Jul 31, 2020 - 3:41:36pm dbickham



**LEGEND**

- IRON PIN FOUND
- IRON PIN SET W / CAP  
ADVANCED 7661  
3/4" - 30" long
- ✕ PK NAIL FOUND
- ⊗ PK NAIL SET
- ▲ RR SPIKE FOUND
- △ RR SPIKE SET
- Ⓜ MONUMENT BOX
- Ⓜ MONUMENT
- ⊕ CONCRETE POST



**RECEIVED**  
 DEC 21 2020  
 Franklin County Engineer  
 Cornell R. Robertson, P.E., P.S.

All iron pins set are 5/8" diameter rebar, 30" long with plastic cap inscribed "Advanced 7661".

This description is based on existing records from the Franklin County Recorder's and the Franklin County Auditor's Office and an actual field survey by Advanced Civil Design, Inc. in March 2004. A drawing of the above description is attached hereto and made a part thereof.

Bearings are based upon the Ohio State Plane Coordinate System South Zone, NAD83 (NSRS 2007) which determined the bearing between found Franklin County Engineer Survey Monument (FCGS 6621) and said Franklin County Engineer Survey Monument (FCGS 2264) as N 03°31'40" E for the centerline of said Stelzer Road.

ADVANCED CIVIL DESIGN, INC.  
 Douglas R. Hock, P.S. 7661  
 Date: 7/31/2020



QUARTER TOWNSHIP 2, TOWNSHIP 1, RANGE 17, U.S.M.L.  
 CITY OF COLUMBUS, FRANKLIN COUNTY, OHIO

**PARCEL EXHIBIT**  
 OF  
 1.997 ACRES & 1.974 ACRES  
 LIFESTYLE BOULEVARD. & STELZER ROAD

PLAN PREPARED BY: DRB  
 CHECKED BY: DRH

**ADVANCED CIVIL DESIGN**  
 ENGINEERS & SURVEYORS

422 Beecher Road  
 Gahanna, Ohio 43230  
 ph 614.428.7750  
 fax 614.428.7755

SCALE: 1" = 50'  
 DATE: July 31, 2020  
 JOB#: 19-0004-163

SHEET 1 / 1