

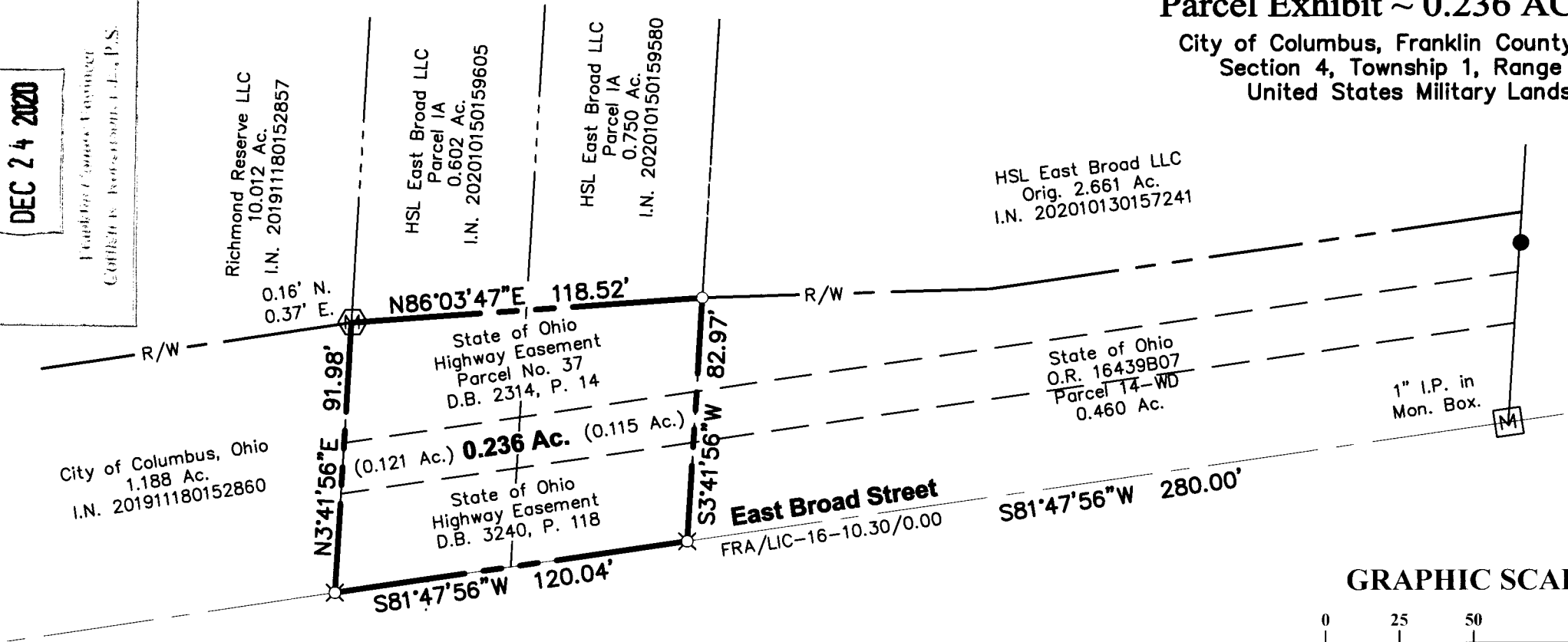
Z:\9-0004-861\DWG\PRODUCTION DRAWINGS\SURVEY\19-0004-861 rw exhibit.dwg Page 1 Oct 29, 2020 2:51:29pm bkrstner



**RECEIVED**  
DEC 24 2020  
Franklin County Engineer  
Columbus, Ohio, U.S.

# Parcel Exhibit ~ 0.236 ACRES

City of Columbus, Franklin County, Ohio  
Section 4, Township 1, Range 16  
United States Military Lands

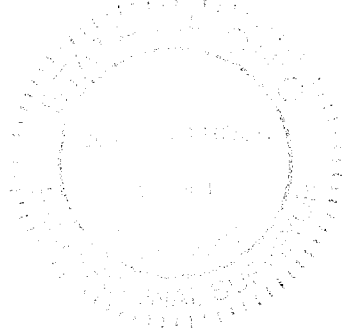


This exhibit is based on information obtained from the Franklin County Auditor's and Recorder's Office and information obtained from an actual field survey conducted in April of 2020.

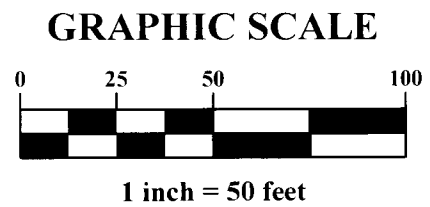
The basis of bearings used for this exhibit are based on the NAD83 Ohio State Plane Coordinate System, South Zone (NSRS 2011) which determines a portion of the bearing for the centerline of E. Broad Street to be S81°47'56\"/>

Iron pins set are 5/8" diameter rebar, 30" long and capped Advanced 766.

*Douglas R. Hock*  
Douglas R. Hock, P.S. 7661  
10/29/2020  
Date:



- Legend**
- Iron Pin Set
  - ⊗ PK Nail Set
  - Iron Rod Found
  - Ⓜ Monument Found
  - Ⓜ Monument Box Found



DRAWN BY: BCK	JOB NO.: 19-0004-861	
DATE: 10/26/20	CHECKED BY: DRB	
		1 1
		781 Science Boulevard, Suite 100 Gahanna, Ohio 43230 ph 614.428.7750 fax 614.428.7755

EXHIBIT - A (Pg 2/2)