



Evans, Mechwart, Hambleton & Tilton, Inc.  
 Engineers • Surveyors • Planners • Scientists  
 5500 New Albany Road, Columbus, OH 43054  
 Phone: 614.775.4500 Toll Free: 888.775.3648  
 emht.com

# SURVEY OF ACREAGE PARCEL

SECTION 7, TOWNSHIP 5, RANGE 22

REFUGEE LANDS

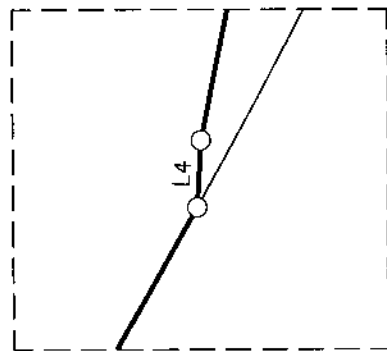
CITY OF GRANDVIEW HEIGHTS, COUNTY OF FRANKLIN, STATE OF OHIO

Date: October 15, 2020

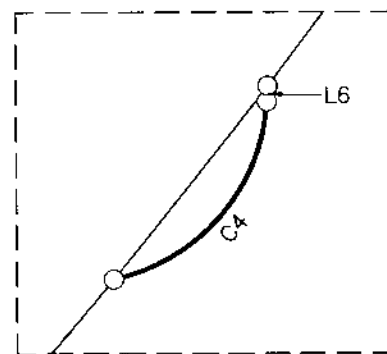
Scale: 1" = 100'

Job No: 2020-0255

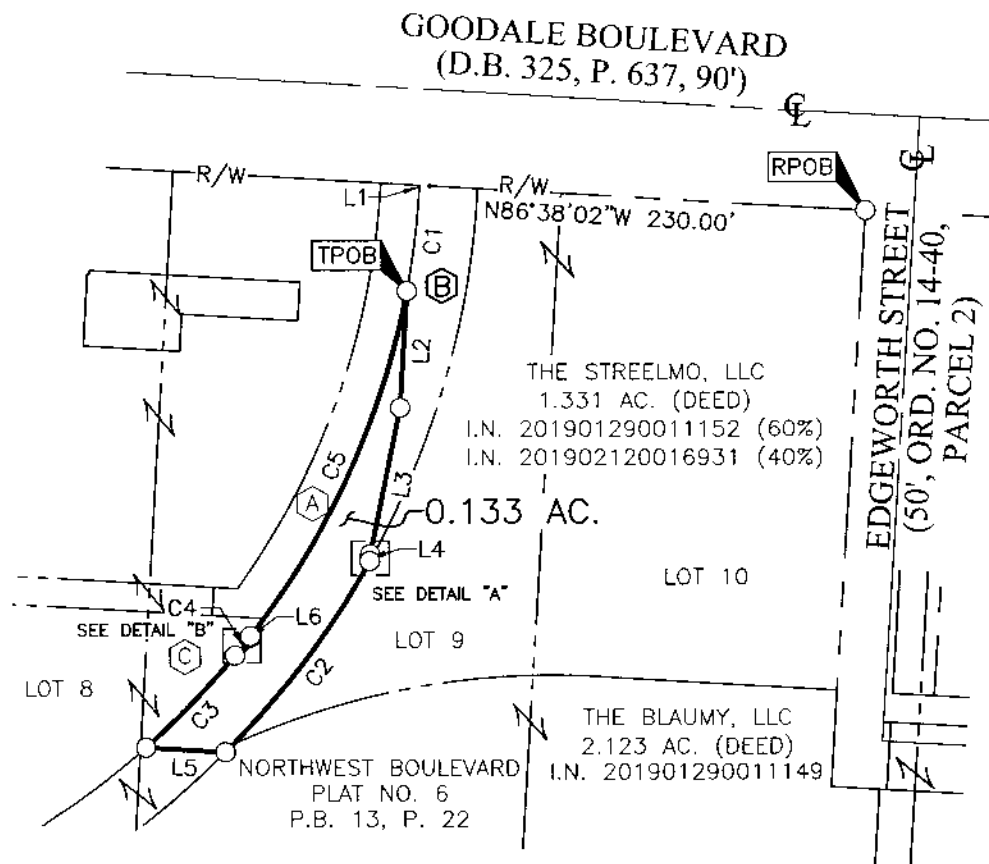
Sheet No: 1 of 2



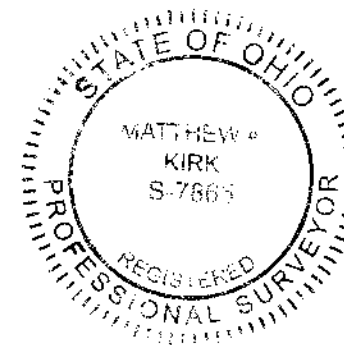
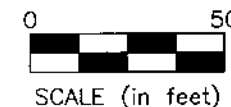
DETAIL "A"  
1" = 10'



DETAIL "B"  
1" = 10'



○ = I.P. SET  
 ○ = MAG. NAIL SET  
 I.P. Set are 13/16"  
 I.D. iron pipes  
 30" long with cap  
 inscribed EMHT INC.



RECEIVED

OCT 16 2020

Franklin County Engineering  
 Cornell R. Robertson, P.E., P.S.

By Matthew A. Kirk  
 Matthew A. Kirk  
 Professional Surveyor No. 7865  
 mkirk@emht.com

15 OCT 20  
 Date



Evans, Mechwart, Hambleton & Tilton, Inc.  
 Engineers • Surveyors • Planners • Scientists  
 5500 New Albany Road, Columbus, OH 43054  
 Phone: 614.775.4500 Toll Free: 888.775.3648  
 emht.com

# SURVEY OF ACREAGE PARCEL

SECTION 7, TOWNSHIP 5, RANGE 22

REFUGEE LANDS

CITY OF GRANDVIEW HEIGHTS, COUNTY OF FRANKLIN, STATE OF OHIO

Date: October 15, 2020

Scale: N/A

Job No: 2020-0255

Sheet No: 2 of 2

LINE TABLE

LINE	BEARING	DISTANCE
L1	S03°21'58"W	1.80'
L2	S03°21'58"W	60.94'
L3	S11°29'47"W	77.78'
L4	S03°21'58"W	3.49'
L5	N86°38'02"W	41.23'
L6	N03°21'58"E	0.80'

- (A) W.W. WILLIAMS COMPANY  
D.B. 2611, P. 167
- (B) NRI EQUITY LAND  
INVESTMENTS, LLC  
0.432 AC. (DEED)  
I.N. 200902230023864
- (C) THE W.W. WILLIAMS COMPANY  
D.B. 1698, P. 432

**BASIS OF BEARINGS:**

The bearings shown hereon are based on the Ohio State Plane Coordinate System, South Zone, as per NAD83 (1986). Control for the bearings was from coordinates of monuments 5-83 and 4-83, having a bearing of North 00° 22' 10" West for a portion of the west limited access right-of-way line of Olentangy River Road, established by the Franklin County Engineering Department using Global Positioning System procedures and equipment.

CURVE TABLE

CURVE	DELTA	RADIUS	ARC	CH. BEARING	CH. DIST.
C1	7°20'25"	420.18'	53.83'	S07°01'25"W	53.79'
C2	15°47'46"	450.18'	124.11'	S36°56'04"W	123.72'
C3	9°03'36"	420.18'	66.44'	N44°01'45"E	66.37'
C4	74°52'06"	10.00'	13.07'	N40°48'01"E	12.16'
C5	27°03'35"	420.18'	198.44'	N24°13'25"E	196.60'

**SURVEY NOTE:**

This survey was prepared using documents of record, prior plats of survey, and observed evidence located by an actual field survey.

