



Evans, Mechwart, Hambleton & Tilton, Inc.
 Engineers • Surveyors • Planners • Scientists
 5500 New Albany Road, Columbus, OH 43054
 Phone: 614.775.4500 Toll Free: 888.775.3648
 emht.com

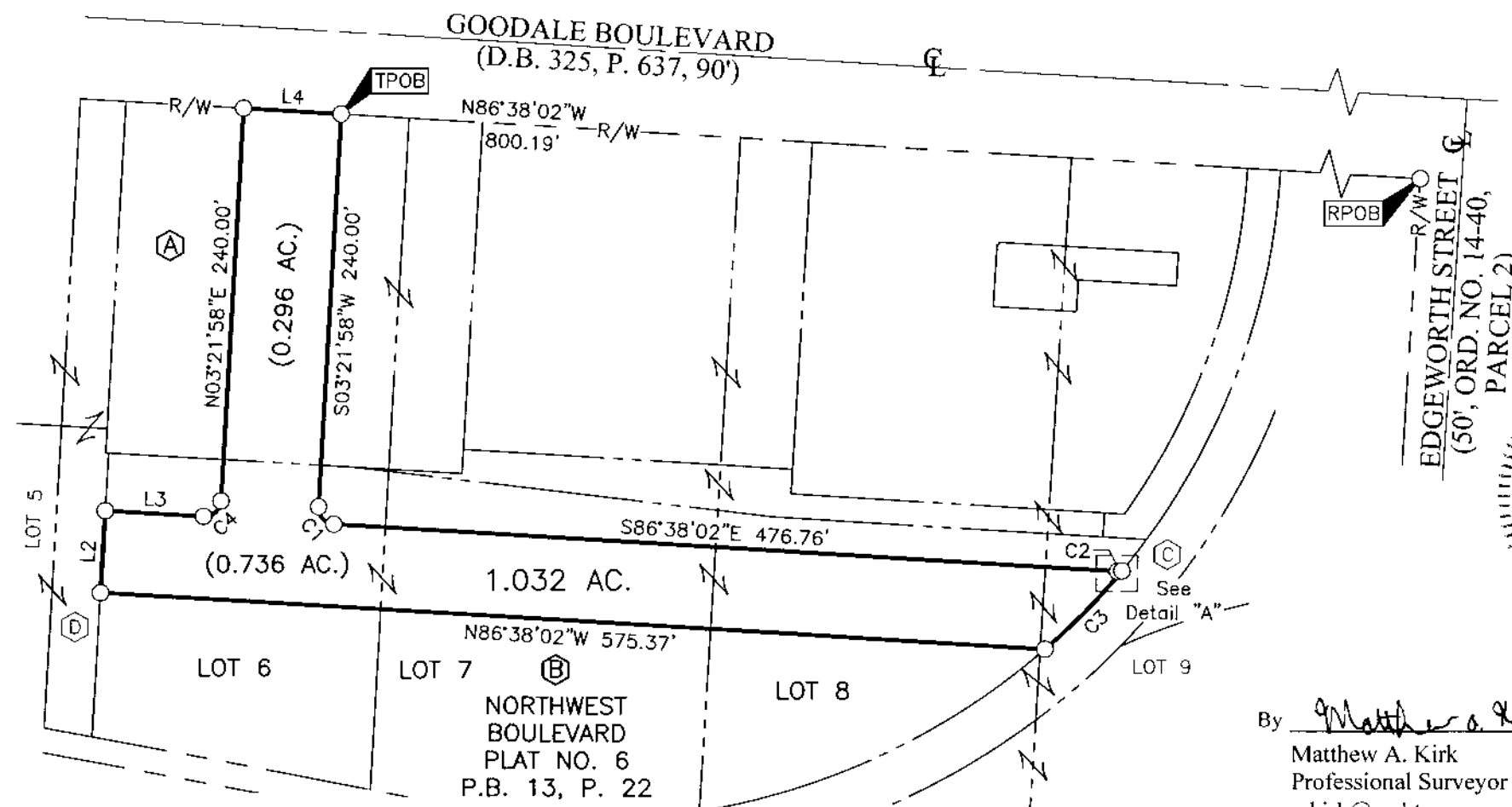
SURVEY OF ACREAGE PARCEL

SECTION 7, TOWNSHIP 5, RANGE 22

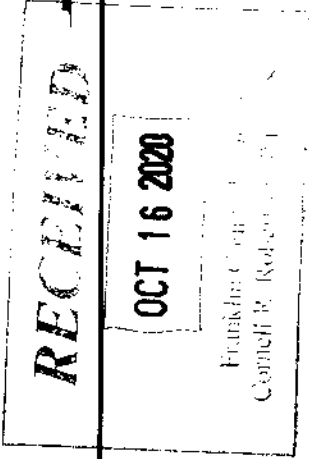
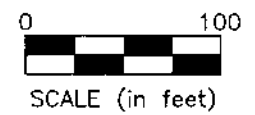
REFUGEE LANDS

CITY OF GRANDVIEW HEIGHTS, COUNTY OF FRANKLIN, STATE OF OHIO

| | |
|-----------|------------------|
| Date: | October 15, 2020 |
| Scale: | 1" = 100' |
| Job No: | 2020-0255 |
| Sheet No: | 1 of 2 |



○ = I.P. SET
 ◊ = MAG. NAIL SET
 I.P. Set are 13/16" I.D. iron pipes 30" long with cap inscribed EMHT INC.



By Matthew A. Kirk Date 15 OCT 20
 Matthew A. Kirk
 Professional Surveyor No. 7865
 mkirk@emht.com

J:\20200255\DWG\04SHEETS\BOUNDARY\20200255-VS-BNDY-03.DWG plotted by MASTON, JOHN on 10/14/2020 4:25:34 PM last saved by JMASON on 10/8/2020 9:54:47 AM
 Xrefa:



Evans, Mechwart, Hambleton & Tilton, Inc.
 Engineers • Surveyors • Planners • Scientists
 5500 New Albany Road, Columbus, OH 43054
 Phone: 614.775.4500 Toll Free: 888.775.3648
 emht.com

SURVEY OF ACREAGE PARCEL

SECTION 7, TOWNSHIP 5, RANGE 22

REFUGEE LANDS

CITY OF GRANDVIEW HEIGHTS, COUNTY OF FRANKLIN, STATE OF OHIO

Date: October 15, 2020

Scale: 1" = 100'

Job No: 2020-0255

Sheet No: 2 of 2

LINE TABLE

| LINE | BEARING | DISTANCE |
|------|-------------|----------|
| L2 | N03°21'26"E | 50.00' |
| L3 | S86°38'02"E | 59.26' |
| L4 | S86°38'02"E | 60.00' |

THE W.W. WILLIAMS COMPANY
 1.075 AC. (DEED)
 I.N. 200109100209374

P.N. 030-000710

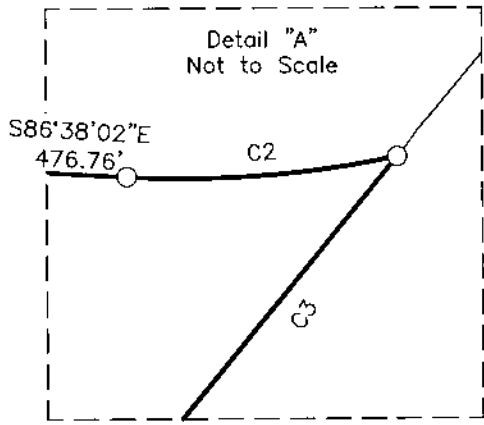
THE W.W. WILLIAMS COMPANY
 D.B. 1698, P. 432

P.N. 030-002017

NRI EQUITY LAND
 INVESTMENTS, LLC
 0.432 AC. (DEED)
 I.N. 200902230023864

IBEW LOCAL UNION 683
 I.N. 201706190082408

RECEIVED
 OCT 16 2020
 Franklin County Engineer
 Cornell R. Robertson, P.E.



CURVE TABLE

| CURVE | DELTA | RADIUS | ARC | CH. BEARING | CH. DIST. |
|-------|-----------|---------|--------|-------------|-----------|
| C1 | 90°00'00" | 10.00' | 15.71' | S41°38'02"E | 14.14' |
| C2 | 15°05'14" | 10.00' | 2.63' | N85°49'21"E | 2.63' |
| C3 | 9°03'34" | 420.18' | 66.44' | S44°01'43"W | 66.37' |
| C4 | 90°00'00" | 10.00' | 15.71' | N48°21'58"E | 14.14' |

○ = I.P. SET
 ○ = MAG. NAIL SET
 I.P. Set are 13/16"
 I.D. iron pipes
 30" long with cap
 inscribed EMHT INC.

SURVEY NOTE:

This survey was prepared using documents of record, prior plats of survey, and observed evidence located by an actual field survey.

BASIS OF BEARINGS:

The bearings shown hereon are based on the Ohio State Plane Coordinate System, South Zone, as per NAD83 (1986). Control for the bearings was from coordinates of monuments 5-83 and 4-83, having a bearing of North 00° 22' 10" West for a portion of the west limited access right-of-way line of Olentangy River Road, established by the Franklin County Engineering Department using Global Positioning System procedures and equipment.