



Evans, Mechwart, Hambleton & Tilton, Inc.
 Engineers • Surveyors • Planners • Scientists
 5500 New Albany Road, Columbus, OH 43054
 Phone: 614.775.4500 Toll Free: 888.775.3648
 emht.com

SURVEY OF ACREAGE PARCEL

SECTION 7, TOWNSHIP 5, RANGE 22

REFUGEE LANDS

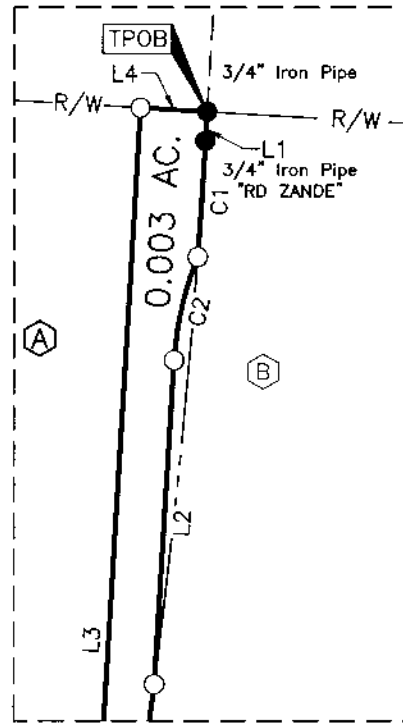
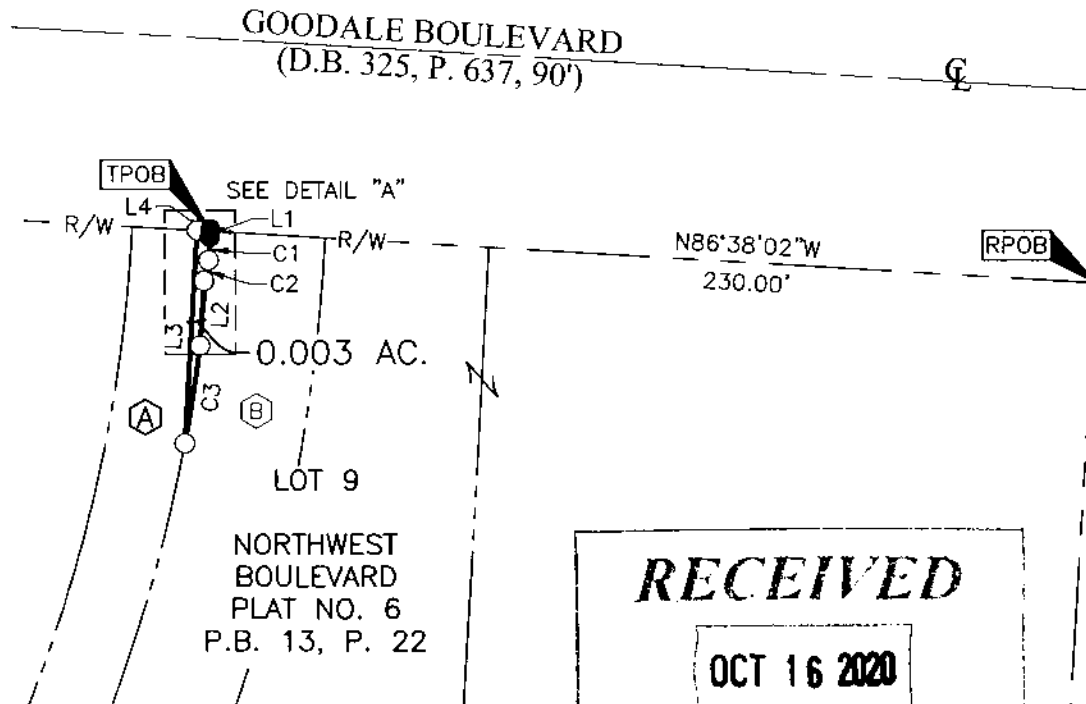
CITY OF GRANDVIEW HEIGHTS, COUNTY OF FRANKLIN, STATE OF OHIO

Date: October 15, 2020

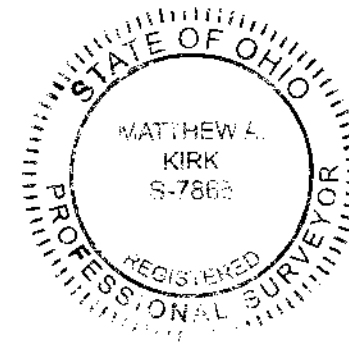
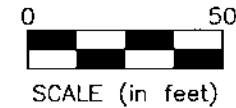
Scale: 1" = 50'

Job No: 2020-0255

Sheet No: 1 of 2



○ = I.P. SET
 ⊙ = MAG. NAIL SET
 I.P. Set are 13/16"
 I.D. iron pipes
 30" long with cap
 inscribed EMHT INC.



RECEIVED
OCT 16 2020
 Franklin County Engineer
 Cornell R. Robertson, P.L., P.S.

By Matthew A. Kirk Date 15 OCT 20
 Matthew A. Kirk
 Professional Surveyor No. 7865
 mkirk@emht.com



Evans, Mechwart, Hambleton & Tilton, Inc.
 Engineers • Surveyors • Planners • Scientists
 5500 New Albany Road, Columbus, OH 43054
 Phone: 614.775.4500 Toll Free: 888.775.3648
 emht.com

SURVEY OF ACREAGE PARCEL

SECTION 7, TOWNSHIP 5, RANGE 22

REFUGEE LANDS

CITY OF GRANDVIEW HEIGHTS, COUNTY OF FRANKLIN, STATE OF OHIO

Date: October 15, 2020

Scale: N/A

Job No: 2020-0255

Sheet No: 2 of 2

(A)

W.W. WILLIAMS COMPANY
 D.B. 2611, P. 167

(B)

NRI EQUITY LAND
 INVESTMENTS, LLC
 0.432 AC. (DEED)
 I.N. 200902230023864

LINE TABLE

LINE	BEARING	DISTANCE
L1	S03°21'58"W	1.80'
L2	S03°21'58"W	16.87'
L3	N03°21'58"E	55.49'
L4	S86°38'02"E	3.43'

BASIS OF BEARINGS:

The bearings shown hereon are based on the Ohio State Plane Coordinate System, South Zone, as per NAD83 (1986). Control for the bearings was from coordinates of monuments 5-83 and 4-83, having a bearing of North 00° 22' 10" West for a portion of the west limited access right-of-way line of Olentangy River Road, established by the Franklin County Engineering Department using Global Positioning System procedures and equipment.

CURVE TABLE

CURVE	DELTA	RADIUS	ARC	CH. BEARING	CH. DIST.
C1	0°47'08"	420.18'	5.76'	S03°44'43"W	5.76'
C2	18°39'30"	17.00'	5.54'	S12°41'44"W	5.51'
C3	3°30'42"	420.18'	25.75'	S08°56'17"W	25.75'

SURVEY NOTE:

This survey was prepared using documents of record, prior plats of survey, and observed evidence located by an actual field survey.

RECEIVED

OCT 16 2020

Franklin County Engineer
 Council B. Robertson, P.E., P.S.