



Evans, Mechwart, Hambleton & Tilton, Inc.  
 Engineers • Surveyors • Planners • Scientists  
 5500 New Albany Road, Columbus, OH 43054  
 Phone: 614.775.4500 Toll Free: 888.775.3648  
 emht.com

# SURVEY OF ACREAGE PARCEL

SECTION 7, TOWNSHIP 5, RANGE 22

REFUGEE LANDS

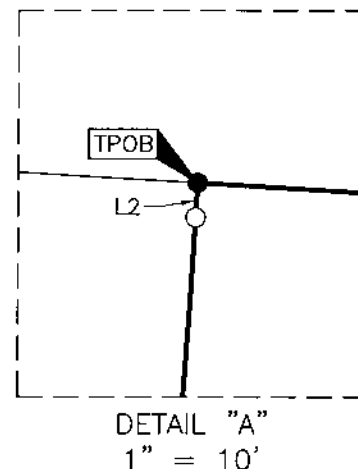
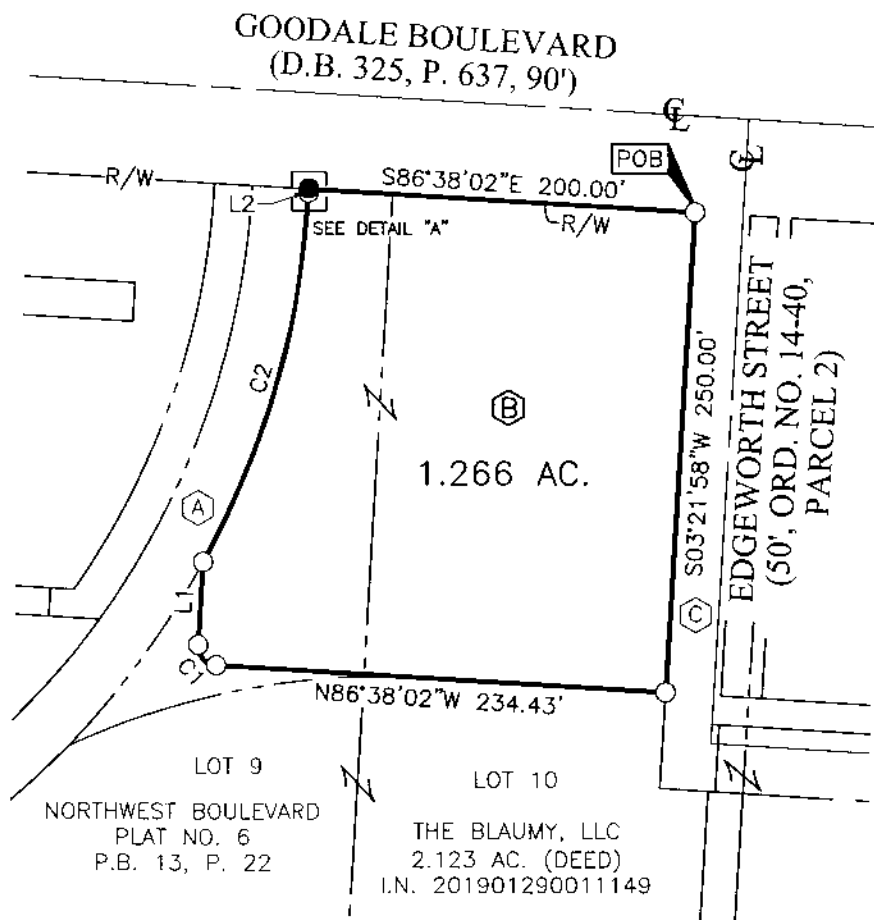
CITY OF GRANDVIEW HEIGHTS, COUNTY OF FRANKLIN, STATE OF OHIO

Date: October 15, 2020

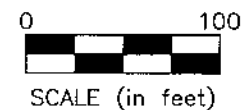
Scale: 1" = 100'

Job No: 2020-0255

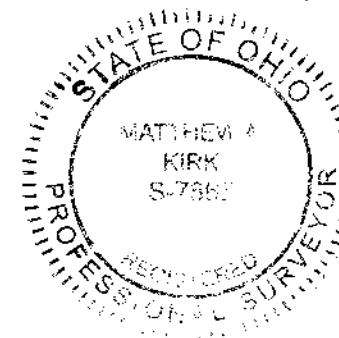
Sheet No: 1 of 2



● = 3/4" I.P. FOUND  
 ○ = I.P. SET  
 ○ = MAG. NAIL SET  
 I.P. Set are 13/16" I.D. iron pipes 30" long with cap inscribed EMHT INC.



**RECEIVED**  
**OCT 16 2020**  
 Franklin County Engineer  
 Cornell R. Robertson, P.L., P.S.



By Matthew A. Kirk Date 15 Oct 20  
 Matthew A. Kirk  
 Professional Surveyor No. 7865  
 mkirk@emht.com



Evans, Mechwart, Hambleton & Tilton, Inc.  
 Engineers • Surveyors • Planners • Scientists  
 5500 New Albany Road, Columbus, OH 43054  
 Phone: 614.775.4500 Toll Free: 888.775.3648  
 emht.com

# SURVEY OF ACREAGE PARCEL

## SECTION 7, TOWNSHIP 5, RANGE 22

### REFUGEE LANDS

#### CITY OF GRANDVIEW HEIGHTS, COUNTY OF FRANKLIN, STATE OF OHIO

Date: October 15, 2020  
 Scale: N/A  
 Job No: 2020-0255  
 Sheet No: 2 of 2

(A) NRI EQUITY LAND INVESTMENTS, LLC  
 0.432 AC. (DEED)  
 I.N. 200902230023864

(B) THE STREELMO, LLC  
 1.331 AC. (DEED)  
 I.N. 201901290011152 (60%)  
 I.N. 201902120016931 (40%)

(C) THE NORTHWEST BOULEVARD COMPANY  
 D.B. 616, P. 29

LINE TABLE		
LINE	BEARING	DISTANCE
L1	N03°21'58"E	43.09'
L2	N03°21'58"E	1.80'

CURVE TABLE					
CURVE	DELTA	RADIUS	ARC	CH. BEARING	CH. DIST.
C1	90°00'00"	10.00'	15.71'	N41°38'02"W	14.14'
C2	25°40'59"	450.18'	201.79'	N16°11'42"E	200.11'

**BASIS OF BEARINGS:**

The bearings shown hereon are based on the Ohio State Plane Coordinate System, South Zone, as per NAD83 (1986). Control for the bearings was from coordinates of monuments 5-83 and 4-83, having a bearing of North 00° 22' 10" West for a portion of the west limited access right-of-way line of Olentangy River Road, established by the Franklin County Engineering Department using Global Positioning System procedures and equipment.

**SURVEY NOTE:**

This survey was prepared using documents of record, prior plats of survey, and observed evidence located by an actual field survey.

