



Evans, Mechwart, Hambleton & Tilton, Inc.
 Engineers • Surveyors • Planners • Scientists
 5500 New Albany Road, Columbus, OH 43054
 Phone: 614.775.4500 Toll Free: 888.775.3648

emht.com

SURVEY OF ACREAGE PARCEL

SECTION 7, TOWNSHIP 5, RANGE 22

REFUGEE LANDS

CITY OF GRANDVIEW HEIGHTS, COUNTY OF FRANKLIN, STATE OF OHIO

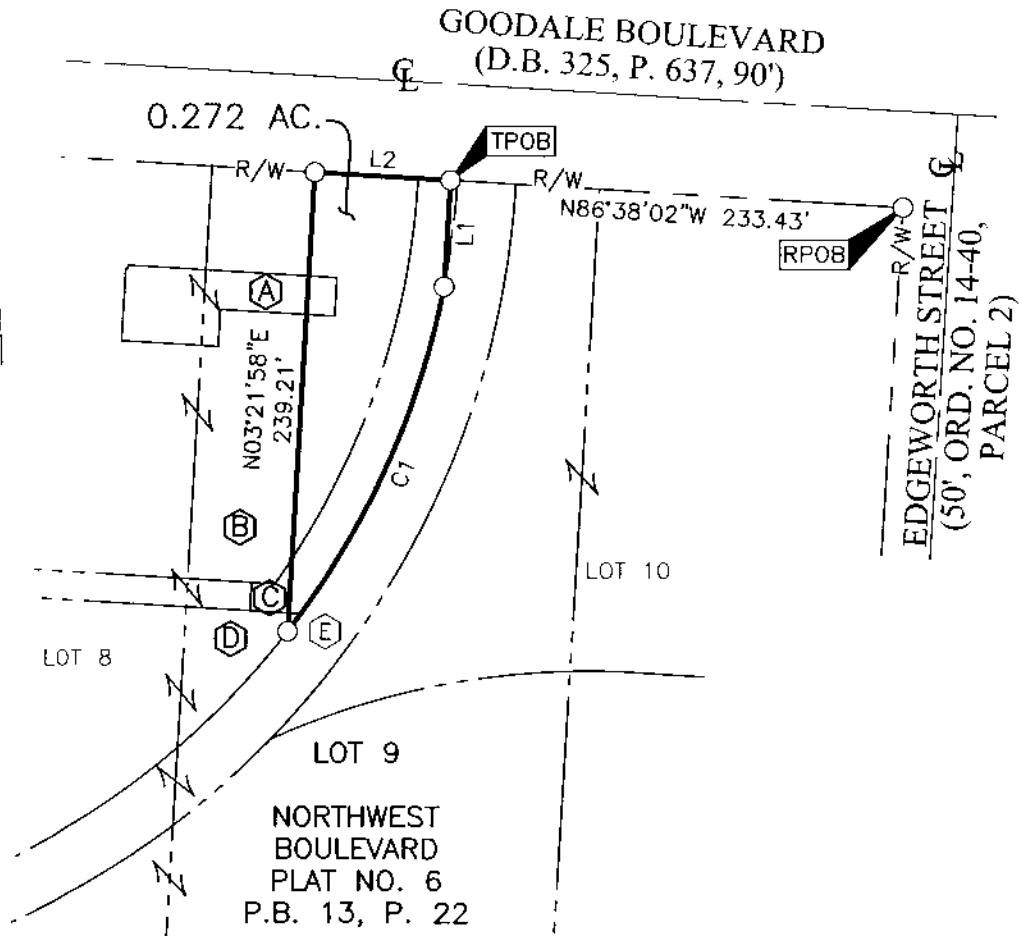
Date: October 15, 2020

Scale: 1" = 100'

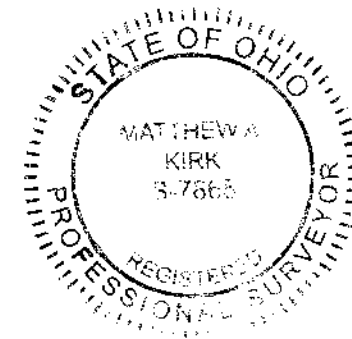
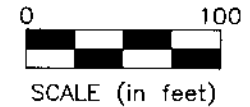
Job No: 2020-0255

Sheet No: 1 of 2

RECEIVED
 OCT 16 2020
 Franklin County Engineer
 Cornell R. Rocensol, P.E., P.S.



○ = I.P. SET
 ◊ = MAG. NAIL SET
 I.P. Set are 13/16"
 I.D. iron pipes
 30" long with cap
 inscribed EMHT INC.



By Matthew A. Kirk Date 15 OCT 20
 Matthew A. Kirk
 Professional Surveyor No. 7865
 mkirk@emht.com



Evans, Mechwart, Hambleton & Tilton, Inc.
 Engineers • Surveyors • Planners • Scientists
 5500 New Albany Road, Columbus, OH 43054
 Phone: 614.775.4500 Toll Free: 888.775.3648
 emht.com

SURVEY OF ACREAGE PARCEL

SECTION 7, TOWNSHIP 5, RANGE 22

REFUGEE LANDS

CITY OF GRANDVIEW HEIGHTS, COUNTY OF FRANKLIN, STATE OF OHIO

Date: October 15, 2020

Scale: 1" = 100'

Job No: 2020-0255

Sheet No: 2 of 2

(A) THE W.W. WILLIAMS COMPANY
 PARCEL TWO
 O.R. 11046A05

P.N. 030-000226
 (0.007 AC.)

(B) W.W. WILLIAMS COMPANY
 D.B. 643, P. 140

P.N. 030-001872
 (0.161 AC.)

(C) W.W. WILLIAMS COMPANY
 D.B. 2611, P. 167

P.N. 030-002002
 (0.103 AC.)

(D) THE W.W. WILLIAMS COMPANY
 D.B. 1698, P. 432

P.N. 030-002017
 (0.001 AC.)

(E) NRI EQUITY LAND
 INVESTMENTS, LLC
 0.432 AC. (DEED)
 I.N. 200902230023864

LINE TABLE		
LINE	BEARING	DISTANCE
L1	S03°21'58"W	55.49'
L2	S86°38'02"E	70.00'

CURVE TABLE					
CURVE	DELTA	RADIUS	ARC	CH. BEARING	CH. DIST.
C1	27°03'35"	420.18'	198.44'	S24°13'25"W	196.60'

BASIS OF BEARINGS:

The bearings shown hereon are based on the Ohio State Plane Coordinate System, South Zone, as per NAD83 (1986). Control for the bearings was from coordinates of monuments 5-83 and 4-83, having a bearing of North 00° 22' 10" West for a portion of the west limited access right-of-way line of Olentangy River Road, established by the Franklin County Engineering Department using Global Positioning System procedures and equipment.

SURVEY NOTE:

This survey was prepared using documents of record, prior plats of survey, and observed evidence located by an actual field survey.

RECEIVED

OCT 16 2020