



Evans, Mechwart, Hambleton & Tilton, Inc.
 Engineers • Surveyors • Planners • Scientists
 5500 New Albany Road, Columbus, OH 43054
 Phone: 614.775.4300 Toll Free: 888.775.3648
 emht.com

SURVEY OF ACREAGE PARCEL

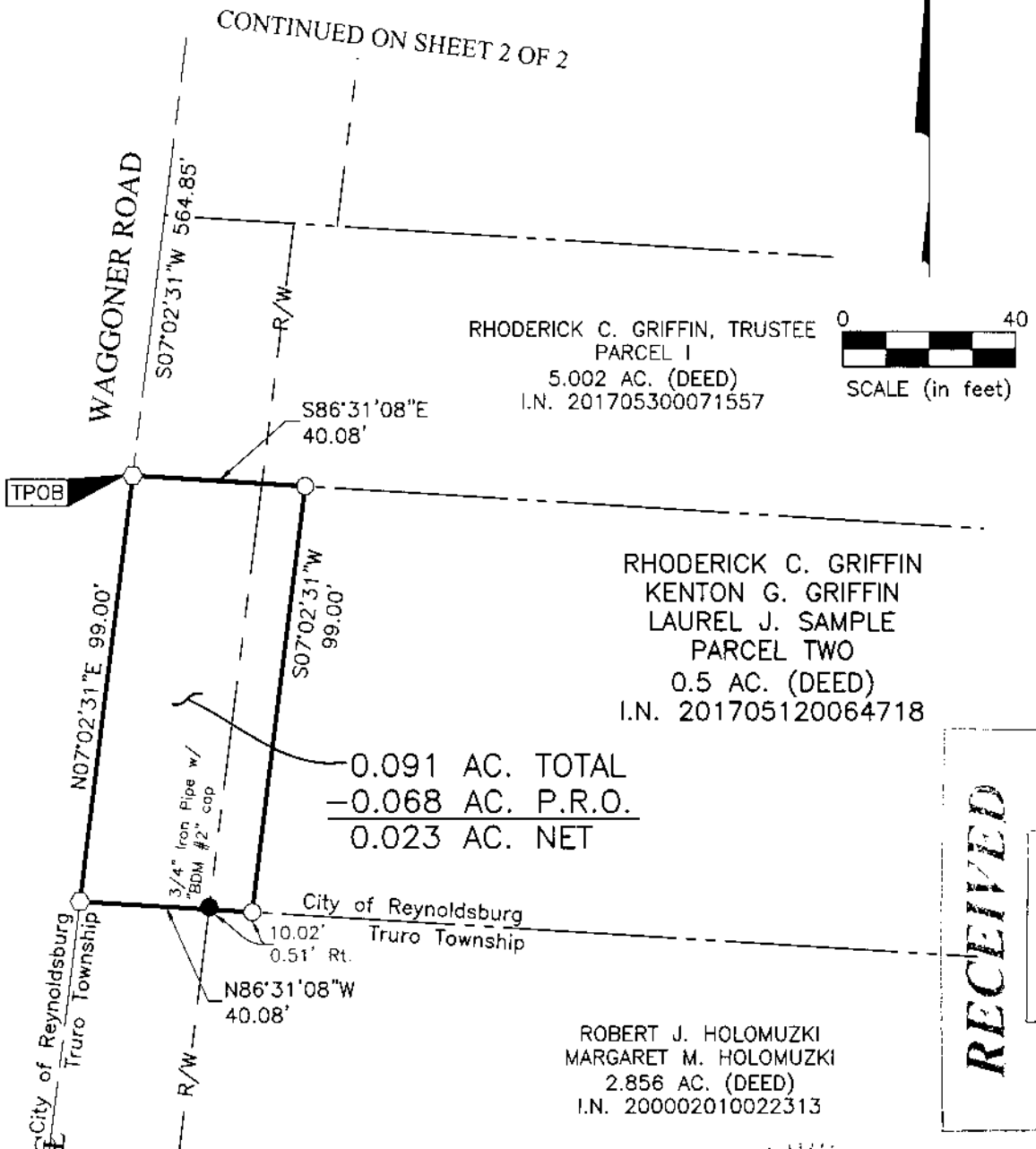
SECTION 6, TOWNSHIP 16, RANGE 20

REFUGEE LANDS

CITY OF REYNOLDSBURG, COUNTY OF FRANKLIN, STATE OF OHIO

Date: October 8, 2020 Scale: 1" = 40' Job No: 2019-1171 Sheet No: 1 of 2

SEE SHEET 2 OF 2 FOR:
 REFERENCE POINT OF BEGINNING
 BASIS OF BEARINGS
 MONUMENT LEGEND



J:\20191171\DWG\04SHEETS\BOUNDARY\20191171-VS-BNDY-RWAY-02.DWG plotted by MASTON, JOHN on 10/9/2020 3:05:02 PM last saved by SCIEGER on 10/1/2020 11:35:48 AM

SURVEY NOTE:

This survey was prepared using documents of record, prior plats of survey, and observed evidence located by an actual field survey performed under the direct supervision of Matthew A. Kirk, Professional Surveyor Number 7865 in January of 2020.



By Matthew A. Kirk Date 8 Oct 20
 Matthew A. Kirk
 Professional Surveyor No. 7865
 mkirk@emht.com

RECEIVED

OCT 15 2020

Franklin County Engineer
 Cornell R. Robertson, P.E., P.S.



Evans, Mechwart, Hambleton & Tilton, Inc.
 Engineers • Surveyors • Planners • Scientists
 5500 New Albany Road, Columbus, OH 43054
 Phone: 614.775.4300 Fax: 614.775.3648
 emht.com

SURVEY OF ACREAGE PARCEL

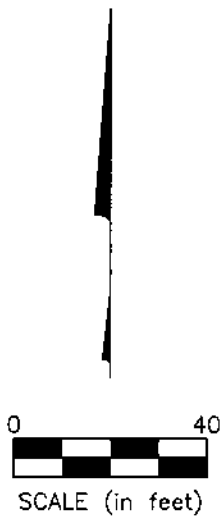
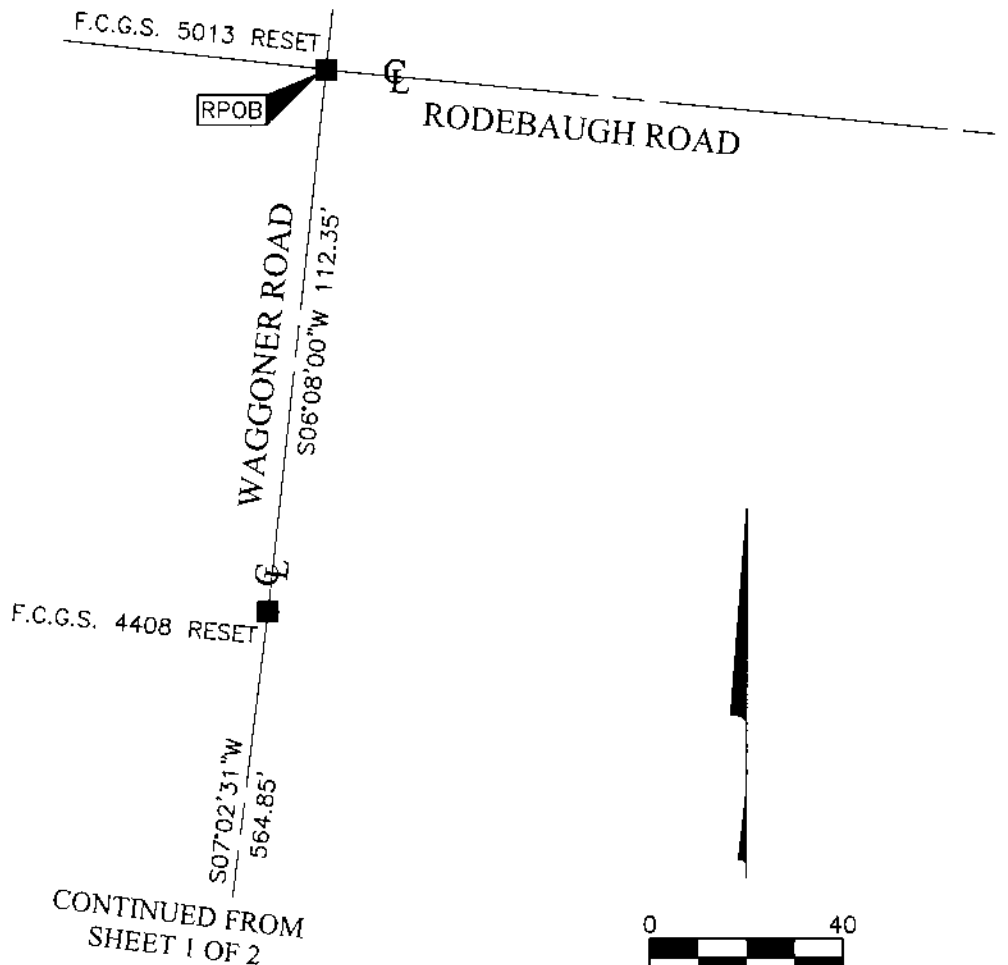
SECTION 6, TOWNSHIP 16, RANGE 20

REFUGEE LANDS

CITY OF REYNOLDSBURG, COUNTY OF FRANKLIN, STATE OF OHIO

Date: October 8, 2020 Scale: 1" = 40' Job No: 2019-1171 Sheet No: 2 of 2

J:\2019\1171\DWG\04SHEETS\BOUNDARY\20191171-VS-BINDY-RWAY-02.DWG plotted by MASTON, JOHN on 10/6/2020 3:05:02 PM last saved by SGEIGER on 10/1/2020 11:35:48 AM xrefs:



BASIS OF BEARINGS:

The bearings shown hereon are based on the Ohio State Plane Coordinate System, South Zone, NAD 83 (NSRS2007). Said bearings originated from a field traverse which was tied (referenced) to said coordinate system by GPS observations of Franklin County Engineering Department monuments FRANK 48, GLENREST and FCCS 4408 RESET.

- = STONE FND.
- = MON. FND.
- = I.P. FND.
- = I.P. SET
- = MAG. NAIL FND.
- = MAG. NAIL SET
- ▲ = R.R. SPK. FND.
- = P.K. NAIL FND.

I.P. Set are 13/16" I.D. iron pipes
 30" long with cap inscribed EMHT INC.

RECEIVED

OCT 16 2020

Franklin County Engineer
 Cornell R. Robertson, P.E., P.S.