



Evans, Machwar, Hambleton & Tilton, Inc.  
 Engineers • Surveyors • Planners • Scientists  
 5500 New Albany Road, Columbus, OH 43054  
 Phone: 614.775.4500 Toll Free: 888.775.3648  
 emht.com

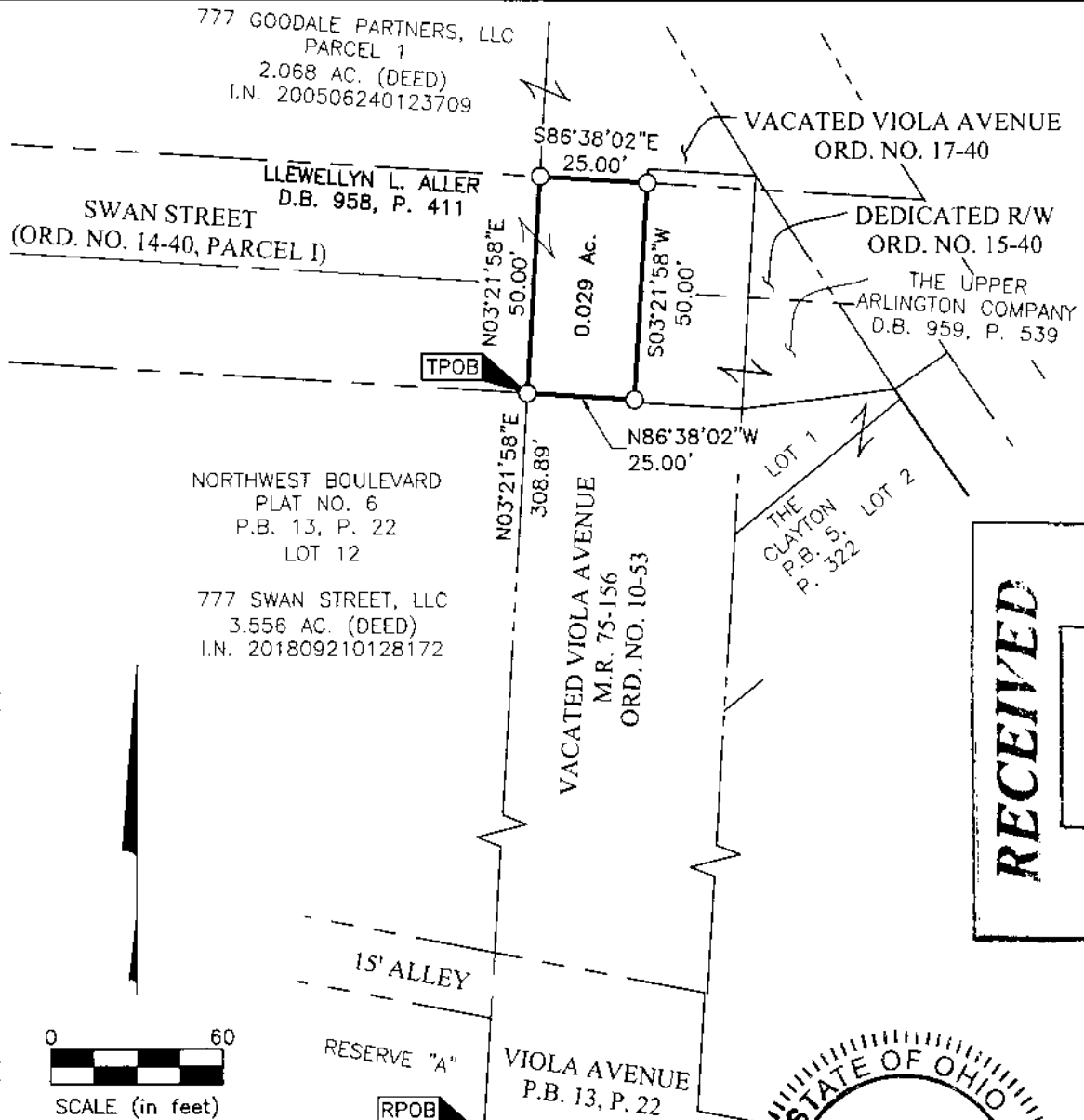
# SURVEY OF ACREAGE PARCEL

SECTION 7, TOWNSHIP 5, RANGE 22

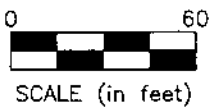
REFUGEE LANDS

CITY OF GRANDVIEW HEIGHTS, COUNTY OF FRANKLIN, STATE OF OHIO

Date: October 2, 2020 Scale: 1" = 40' Job No: 2020-0255 Sheet No: 1 of 1



I:\A\20200255\DWG\04SHEETS\BOUNDARY\20200255-01.DWG plotted by MASTON, JOHN on 10/2/2020 1:25:04 PM last saved by JMASTON on 10/2/2020 12:21:24 PM



○ = I.P. SET  
 I.P. Set are 13/16" I.D. iron pipes  
 30" long with cap inscribed EMHT INC.



**RECEIVED**

**OCT 07 2020**

Franklin County Engineer  
 Cornell R. Robertson, P.E., P.S.

By Matthew A. Kirk Date 2 OCT 20  
 Matthew A. Kirk Professional Surveyor No. 7865  
 mkirk@emht.com

**BASIS OF BEARINGS:**  
 The bearings shown hereon are based on the Ohio State Plane Coordinate System, South Zone, as per NAD83 (1986). Control for the bearings was from coordinates of monuments 5-83 and 4-83, having a bearing of North 00° 22' 10" West for a portion of the west limited access right-of-way line of Olentangy River Road, established by the Franklin County Engineering Department using Global Positioning System procedures and equipment.