

Scioto Darby Creek & Walcutt Road Roundabout  
City of Hilliard, Ohio

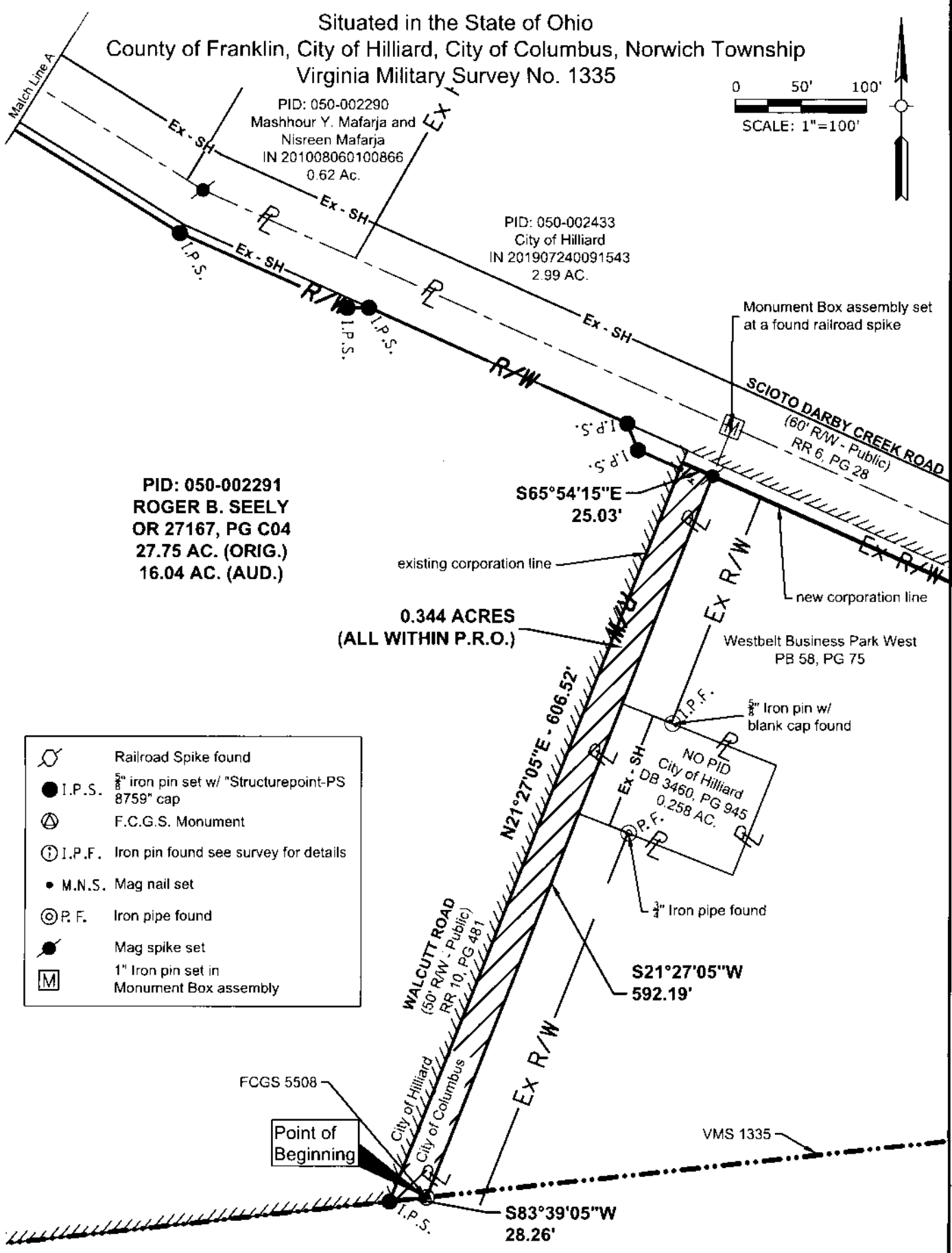
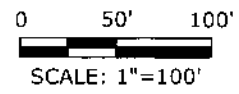
**AMERICAN STRUCTUREPOINT INC.**  
2250 Corporate Exchange Drive | Suite 300  
Columbus, Ohio 43231  
TEL 614 907 2235 FAX 614 901 2236  
www.structurepoint.com

Scale	1" = 100'
Drawn By	ATJ
Checked By	BPB
Date	07/06/2020
Job No.	2014.00314

Sheet 1 of 1

Exhibit "B"  
0.344 Ac. Fee R/W  
Acquired from  
Roger B. Seely

Situated in the State of Ohio  
County of Franklin, City of Hilliard, City of Columbus, Norwich Township  
Virginia Military Survey No. 1335



PID: 050-002291  
**ROGER B. SEELY**  
OR 27167, PG C04  
27.75 AC. (ORIG.)  
16.04 AC. (AUD.)

0.344 ACRES  
(ALL WITHIN P.R.O.)

- Railroad Spike found
- I.P.S. 5/8" iron pin set w/ "Structurepoint-PS 8759" cap
- F.C.G.S. Monument
- I.P.F. Iron pin found see survey for details
- M.N.S. Mag nail set
- P.F. Iron pipe found
- Mag spike set
- 1" Iron pin set in Monument Box assembly

Basis of bearing:  
Bearings shown hereon are based North 58 degrees 12 minutes 44 seconds West for the centerline of right-of-way of Scioto Darby Creek Road, measured from Grid North, referenced to the Ohio State Plane Coordinate System (South Zone) and the North American Datum of 1983 (2011 Adjustment), as established utilizing a GPS survey and an NGS OPUS solution.

I hereby certify that:  
This drawing represents the results of an actual field survey of the premises performed by American Structurepoint, Inc., in Oct. 2019 and is true and correct to the best of my knowledge and belief.

Andrew T. Jordan, P.S. No. 8759  
American Structurepoint, Inc.  
Date: 7-9-2020



**RECEIVED**  
SEP 30 2020  
Franklin County Engineer  
COUNTY ENGINEER, FRANKLIN COUNTY, OHIO