

OCT 09 2020

Franklin County Engineer
Cordell R. Robinson, P.E. 1 S



Evans, Mechwart, Hambleton & Tilton, Inc.
Engineers • Surveyors • Planners • Scientists
5500 New Albany Road, Columbus, OH 43054
Phone: 614.775.4500 Toll Free: 888.775.3648
emht.com

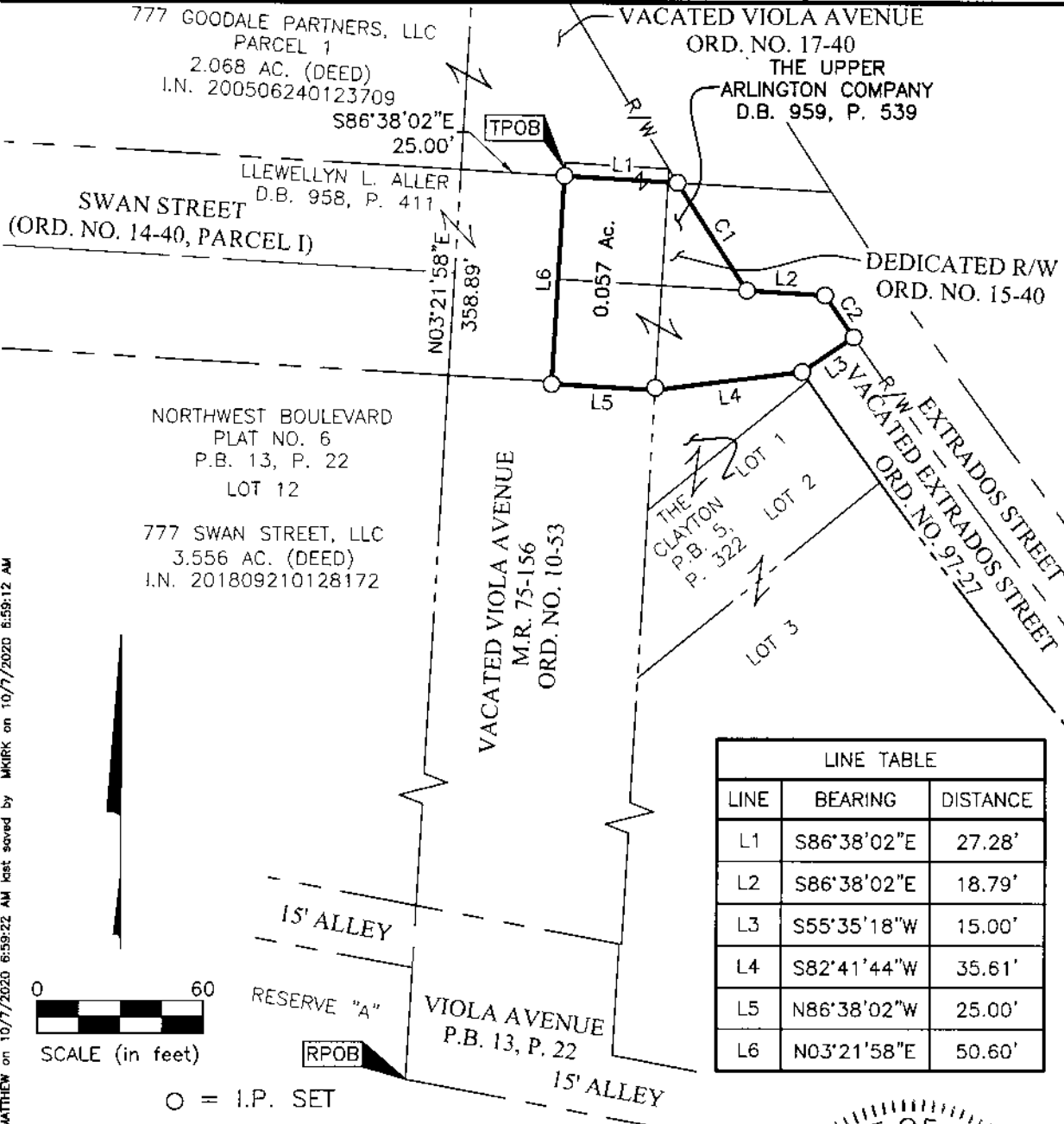
SURVEY OF ACREAGE PARCEL

SECTION 7, TOWNSHIP 5, RANGE 22

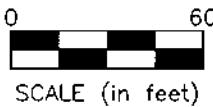
REFUGEE LANDS

CITY OF GRANDVIEW HEIGHTS, COUNTY OF FRANKLIN, STATE OF OHIO

Date: October 7, 2020 Scale: 1" = 40' Job No: 2020-0255 Sheet No: 1 of 1

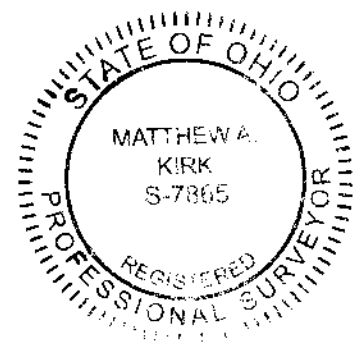


LINE TABLE		
LINE	BEARING	DISTANCE
L1	S86°38'02"E	27.28'
L2	S86°38'02"E	18.79'
L3	S55°35'18"W	15.00'
L4	S82°41'44"W	35.61'
L5	N86°38'02"W	25.00'
L6	N03°21'58"E	50.60'



○ = I.P. SET
 I.P. Set are 13/16" I.D. iron pipes
 30" long with cap inscribed EMHT INC.

CURVE TABLE					
CURVE	DELTA	RADIUS	ARC	CH. BEARING	CH. DIST.
C1	1°17'52"	1366.57'	30.95'	S32°45'41"E	30.95'
C2	0°31'29"	1351.57'	12.38'	S34°08'58"E	12.38'



By Matthew A. Kirk Date 7 Oct 20
 Matthew A. Kirk
 Professional Surveyor No. 7865
 mkirk@emht.com

BASIS OF BEARINGS:
 The bearings shown hereon are based on the Ohio State Plane Coordinate System, South Zone, as per NAD83 (1986). Control for the bearings was from coordinates of monuments 5-83 and 4-83, having a bearing of North 00° 22' 10" West for a portion of the west limited access right-of-way line of Olentangy River Road, established by the Franklin County Engineering Department using Global Positioning System procedures and equipment.

J:\20200255\DWG\04SHEETS\BOUNDARY\20200255-VS-BNDY-11.DWG plotted by KIRK, MATTHEW on 10/7/2020 6:59:22 AM last saved by KIRK, MATTHEW on 10/7/2020 6:59:12 AM
 Xrefs: 20180686-VS-ALIA-02.DWG & 20180686-VS-BNDY-01.DWG