



Evans, Mechwart, Hambleton & Tilton, Inc.
 Engineers • Surveyors • Planners • Scientists
 5500 New Albany Road, Columbus, OH 43054
 Phone: 614.775.4500 Toll Free: 888.775.3648

emht.com

SURVEY OF ACREAGE PARCEL

QUARTER TOWNSHIP 4, TOWNSHIP 1, RANGE 16

UNITED STATES MILITARY DISTRICT

TOWNSHIP OF JEFFERSON, COUNTY OF FRANKLIN, STATE OF OHIO

Date: October 16, 2020

Scale: 1" = 100'

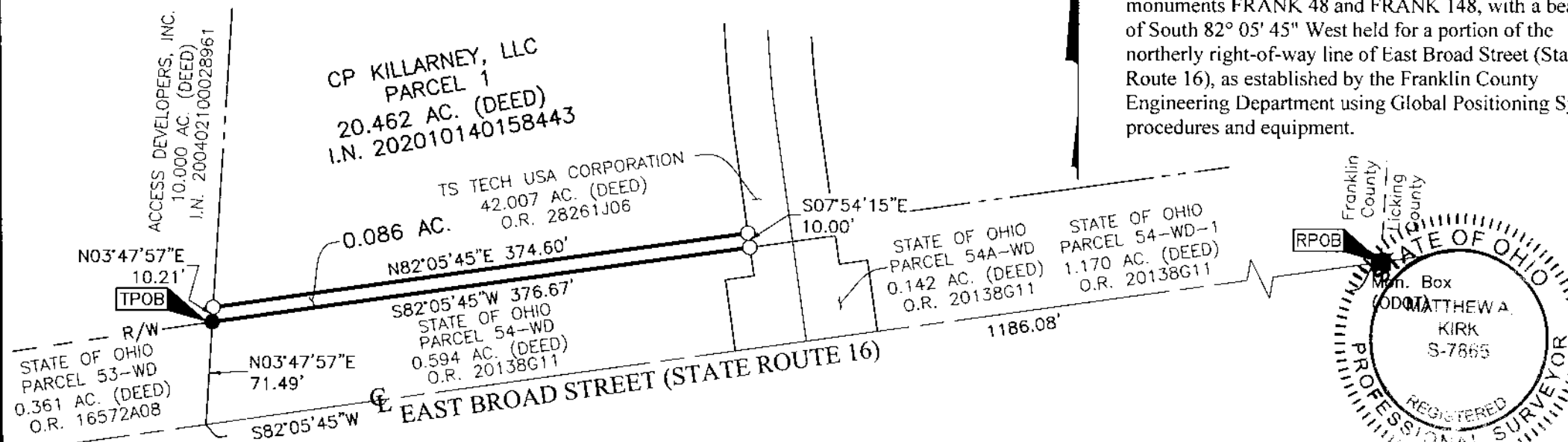
Job No: 2019-1037

SURVEY NOTE:

This survey was prepared using documents of record, prior plats of survey, and observed evidence located by an actual field survey.

BASIS OF BEARINGS:

The bearings shown hereon are based on the Ohio State Plane Coordinate System, South Zone, NAD83 (1986 Adjustment). Control for bearings was from coordinates of monuments FRANK 48 and FRANK 148, with a bearing of South 82° 05' 45" West held for a portion of the northerly right-of-way line of East Broad Street (State Route 16), as established by the Franklin County Engineering Department using Global Positioning System procedures and equipment.

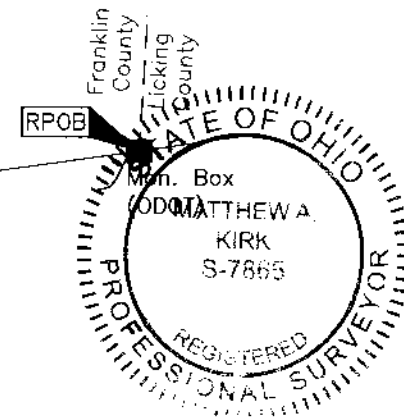


- = MON. FND.
- = 3/4" I.P. FND.
- = I.P. SET



GRAPHIC SCALE (in feet)

I.P. Set are 13/16" I.D. iron pipes 30" long with cap inscribed EMHT INC.



By Matthew A. Kirk 16 Oct 20
 Matthew A. Kirk Date
 Professional Surveyor No. 7865
 mkirk@emht.com

