



Evans, Mechwart, Hambleton & Tilton, Inc.
 Engineers • Surveyors • Planners • Scientists
 5300 New Albany Road, Columbus, OH 43054
 Phone: 614.775.4500 Toll Free: 888.775.3648
 emht.com

SURVEY OF ACREAGE PARCEL

HALF SECTION 10, SECTION 8, TOWNSHIP 5, RANGE 22

REFUGEE LANDS

CITY OF COLUMBUS, COUNTY OF FRANKLIN, STATE OF OHIO

Date: August 14, 2020

Job No: 2019-1262

Scale: 1" = 30'

Revised: October 16, 2020

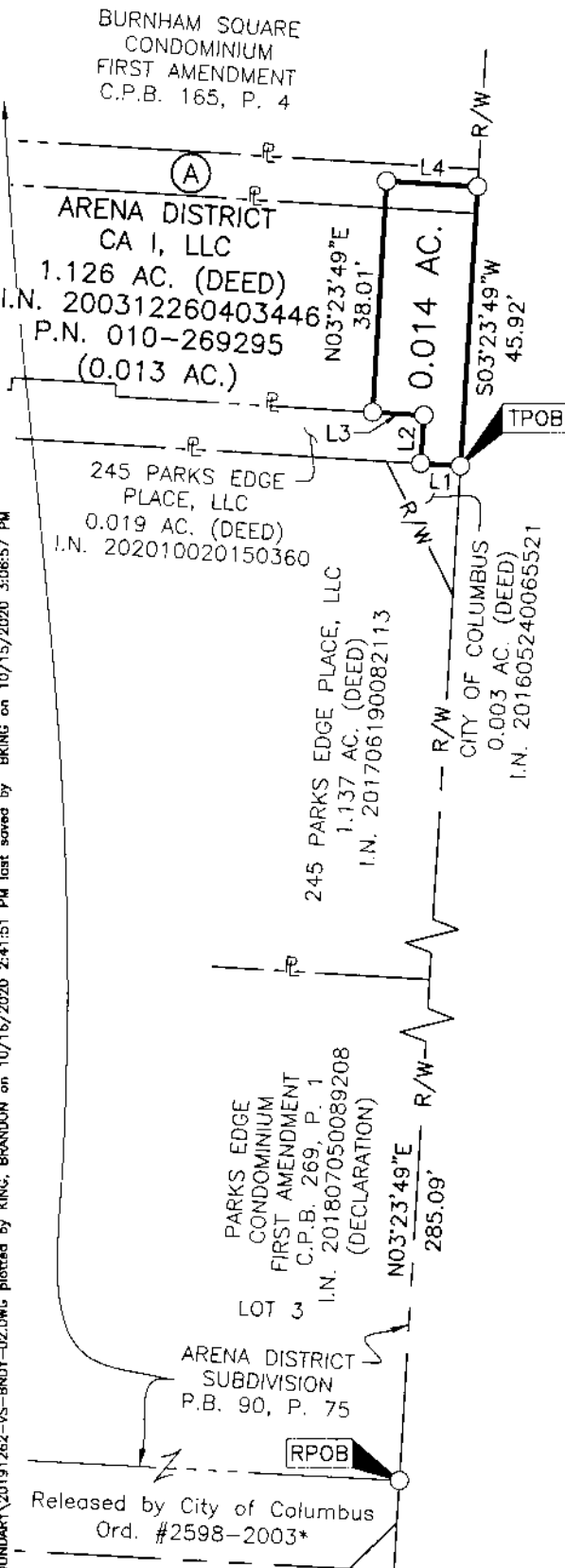
Plan No. 3649-E



GRAPHIC SCALE (in feet)

○ = I.P. SET

I.P. Set are 13/16" I.D. iron pipes
 30" long with cap inscribed EMHT INC.



LINE TABLE		
LINE	BEARING	DISTANCE
L1	N86°36'11"W	6.55'
L2	N03°23'49"E	7.91'
L3	N86°36'11"W	8.43'
L4	S86°36'11"E	14.98'

JOHN H. McCONNELL BOULEVARD
 (40', F.K.A. WEST STREET)
 P.B. 90, P. 75

ARENA DISTRICT
 CA I, LLC

0.103 AC. (DEED)
 I.N. 200803260046104

P.N. 010-269296
 (0.001 AC.)

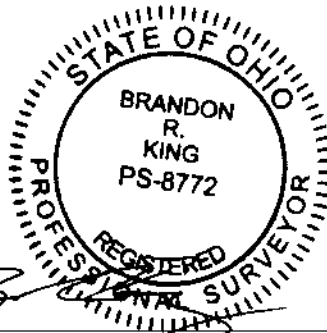
BASIS OF BEARINGS:

The Bearings shown hereon are based on the same meridian as the bearings shown on the subdivision plat titled "Huntington Park" of record in Plat Book 112, Pages 24 and 25, Recorder's Office, Franklin County Ohio. On said plat of record the centerline of Huntington Park Lane has a bearing of North 03°05'07" East.

SURVEY NOTE:

This survey was prepared using documents of record, prior plats of survey, and observed evidence located by an actual field survey.

*See I.N. 200312190398947



RECEIVED

OCT 20 2020

Franklin County Engineer
 Cornell R. Roberson, P.E., P.S.

By

Brandon R. King
 Professional Surveyor No. 8772
 bking@emht.com

Date

10-16-2020

J:\20191262\DWG\04-SHEETS\BOUNDARY\20191262-VS-BNDY-02.DWG plotted by KING, BRANDON on 10/16/2020 2:41:51 PM last saved by BRING on 10/15/2020 3:06:57 PM Xrefs:

Released by City of Columbus
 Ord. #2598-2003*

SPRING STREET
 (WIDTH VARIES)
 P.B. 90, P. 75